

LOVE IN BLOOM

VALENTINE'S DAY 2019



 STULLER

Stop and Smell the Flowers

Leaf through *Love in Bloom* and discover a garden of delights. We've curated a selection of sumptuous stackables, brilliant band and bridal options, enduring favorites, and our budding collection of on-trend jewelry. Of course, there's more, but you'll just have to stroll through this field of flowers and discover the possibilities yourself.



A. **86784** Family Necklace Mounting for Round-Shape Stones, 2- 3.0mm stones, 13.7×5.41mm, 14K Rose, 18", \$419 | B. **86875** Diamond Infinity Bar Necklace, 1/8 CTW, 20.6×6.2mm, 14K Rose, 33, 16", \$649. Mounting **86875**, \$355. | C. **86931** White Freshwater Cultured Pearl Vintage-Inspired Necklace, 1- 4.5-5.0mm pearl, 30.5×14.4mm, 14K Yellow, 16, 16-18", \$755. Mounting **86931** \$729. | D. **86961** Genuine Morganite and Diamond Necklace, 1-6.0mm center, 1/4 CTW, 14.8×6.4mm, 14K White, 518, 124, 16-18", \$1,459. Semi-Set **86961**, \$955. Mounting **86961**, \$375. E. **6491** White Freshwater Cultured Pearl and Diamond Leaf Ring, 1- 6.0-6.5mm pearl, 1/8 CTW, 14K Rose, 16, 33, \$905. Semi-Set **6491**, \$869. Mounting **6491**, \$529. | F. **123968*** Diamond Criss-Cross Ring, 1/8 CTW, 6.4mm width, 14K White, 33, \$1,409. Mounting **123968**, \$815. | G. **86336** Genuine Amethyst Heart Earrings, 2- 2.0mm stones, 7.7×6.3mm, 14K Yellow, 43, \$349. Mounting **86336**, \$175.

H. **652435*** Diamond Arrow Earrings, 1/8 CTW, 16.9×5.2mm, 14K White, 545, \$819 per pair | J. **123412** Diamond Vintage-Inspired Ring, 0.06 CTW, 14.5mm width, 14K Yellow, 33, \$1,465. Mounting **123412**, \$1,055. | K. **51971** Vintage-Inspired Ring, 11.7mm width, 14K Rose, \$485 | L. **86906** Genuine Ruby Bar Earrings, 2- 2.5mm stones, 18.6×1.8mm, 14K Yellow, 66, \$455 per pair. Mounting **86906**, \$109 each. | M. **72088** Genuine Citrine and Diamond Halo-Style Ring, 1- 4.0mm center, 1/8 CTW, 14K Rose, 48, 33, \$935. Semi-Set **72088**, \$869. Mounting **72088**, \$435.

From the Heart

Choose your symbol of love to express what words can't.



A. **86425** Diamond Starburst Necklace, 0.01 CT, 12.4×10.5mm, 14K Rose, 33, 16", \$495. | B. **652146** Diamond Heartbeat Necklace, 1/6 CTW, 22.8×6.8mm, 14K White, 545, 16-18", \$795
 C. **86482** Diamond Lightning Bolt Earrings, 0.03 CTW, 10.4×3.3mm, 14K Yellow, 33, \$345 per pair. Mounting **86482**, \$135 each. | D. **72003** Infinity Stackable Ring, 21- 1.5mm stones, 14K Yellow, 83, \$1,185. Mounting **72003**, \$599. | E. **51828** Stackable Heart Ring, 3.2mm width, 14K Yellow, \$419 | F. **123410** Diamond Heart Ring, 0.06 CT, 15.3mm width, 14K Rose, 33, \$739. Mounting **123410**, \$589. | G. **651829** Arrow Necklace, 25.3×5mm, 14K Yellow, 18", \$535 | H. **122818** Diamond Heart Signet Ring, 0.01 CT, 14K Rose, 33, \$589. Mounting **122818**, \$545. | J. **653467** Diamond Infinity Necklace, 1/6 CTW, 15.7×4.7mm, 14K White, 110, 15-17", \$925. | K. **86933** Family Necklace Mounting for Heart-Shape Stone, 1- 4×4mm stones, 7.5×5.1mm, 14K Rose, 18", \$275
 L. **123378*** Diamond Arrow Ring, 0.03 CTW, 14K White, 33, \$635. Mounting **123378**, \$475. | M. **Genuine Ruby**, Heart, 4x4mm, AA, \$1,192.32 | N. **Forever One™ Created Moissanite**, Heart, 4x4mm, Colorless-DEF, \$174 | P. **Genuine Amethyst**, Heart, 4x4mm, A, \$12.60 | Q. **86435*** Diamond Star Earrings, 0.08 CTW, 7.4mm, 14K White, 33, \$479 per pair. Mounting **86435**, \$139 each.

*Indicates item is rhodium plated.

HEARTS AND SYMBOLS



A. 651830
Diamond Arrow Necklace, 1/10 CTW,
25.3x4.9mm, 14K White, 545, 18", \$755

B. 651759
Diamond Heart Necklace, 1/4 CTW,
11.7x10.2mm, 14K Rose, 545, 18", \$1,079

C. 652133
Heartbeat Necklace, 22.2x7mm,
14K Yellow, 16-18", \$469

D. 86655
Diamond Knot Necklace, 1/6 CT,
7.8x7.6mm, 14K Yellow, 33, 16-18", \$845.
Mounting **86655**, \$405.

E. 86769
Heart Bar Necklace, 28.3x3.7mm,
14K Rose, 16-18", \$339



F



J



M



G



K



N



H



L



P

F. 51790*
Beaded Heart Stackable Ring,
4mm width, 14K White, \$459

G. 71957
Genuine Cabochon Opal Stackable Ring,
3.0mm stones, 14K Rose, 60, \$819.
Mounting **71957**, \$605.

H. 86656
Diamond Knot Earrings,
1/6 CTW, 7.6x7.6mm, 14K Yellow, 33,
\$885 per pair. Mounting **86656**, \$179 per pair.

J. 71999
Genuine Pink Tourmaline Heart
Stackable Ring, 6- 1.5mm stones,
14K Rose, 83, \$729. Mounting **71999**, \$445.

K. 51778
Infinity Heart Ring,
3.3mm width, 14K Yellow, \$365

L. 86328
Heart Earrings, 8.7x8mm,
14K White, \$235 per pair

M. 123432
Diamond Beaded Heart Stackable Ring,
0.06 CTW, 14K Yellow, 33, \$739.
Mounting **123432**, \$555.

N. 123285*
Diamond Infinity Ring, 0.08 CTW, 14K White,
33, \$615. Mounting **123285**, \$429.

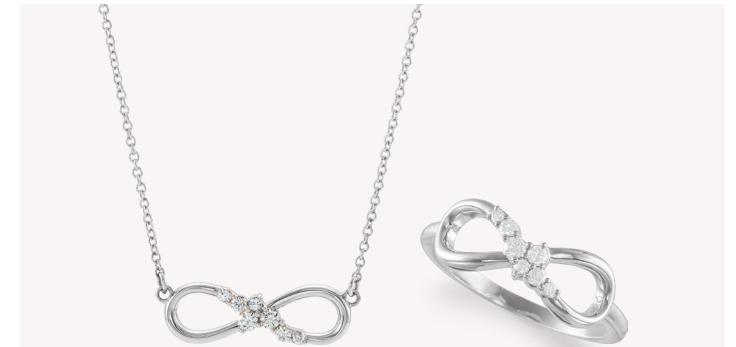
P. 86601
Diamond Infinity Earrings, 1/6 CTW,
11.6x5.4mm, 14K Rose, 33, \$799 per pair.
Mounting **86601**, \$135 each.

ENSEMBLES



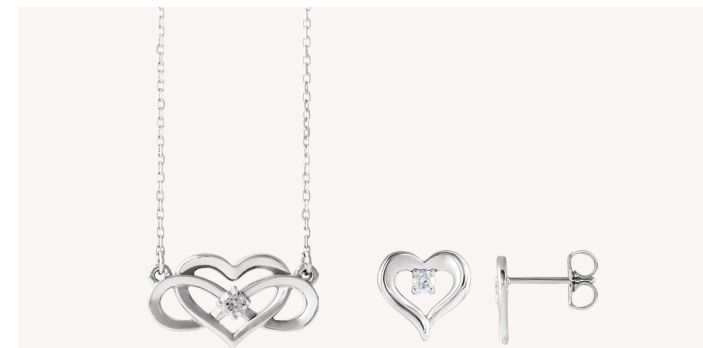
86673
Infinity Heart Necklace, 18.4x5mm,
14K Rose, 16-18", \$415

51773
Infinity Heart Ring, 6.3mm width,
14K Rose, \$469



86875*
Diamond Infinity Necklace, 1/6 CTW, 20.6x6.2mm,
14K White, 33, 16", \$645. Mounting **86875**, \$345.

123779*
Diamond Infinity Ring, 1/6 CTW, 14K White,
33, \$785. Mounting **123779**, \$495.



86677*
Diamond Heart and Infinity Necklace, 1/10 CT, 18x10.5mm,
14K White, 33, 16-18", \$759. Mounting **86677**, \$465.

86702*
Diamond Heart Earrings, 1/10 CTW, 9.7x9.4mm,
14K White, 33, \$535 per pair. Mounting **86702**, \$155 each.



86823
Genuine Ruby Infinity Bar Necklace, 13- 1.5mm stones,
25.5x5.5mm, 14K Yellow, 66, 18", \$739. Mounting **86823**, \$405.

72003
Genuine Ruby Infinity Stackable Ring, 1.5mm stones,
14K Yellow, 66, \$1,615. Mounting **72003**, \$599.



86335
Diamond Heart Necklace, 0.03 CT, 10.4x7.7mm,
14K Yellow, 33, 16", \$415. Mounting **86335**, \$385.

86336
Diamond Heart Earrings, 0.06 CTW, 7.7x6.3mm,
14K Yellow, 33, \$449 per pair. Mounting **86336**, \$175 each.

122822
Diamond Heart Ring, 1/10 CT, 9.5mm, 14K Yellow,
33, \$809. Mounting **122822**, \$555.



86561
Infinity Rope Necklace,
16.4x6.4mm, 14K Rose, 16-18", \$349

86682
Infinity Rope Earrings,
9.5x4.4mm, 14K Rose, \$179 per pair

51724
Infinity Rope Ring,
6.9mm width, 14K Rose, \$299



Regal Regalia

Be fit for royalty with any adornment from our regal jewelry collection.

A. **653534** Diamond Ring, 3/4 CTW, 14K Yellow, 110, size 7, \$2,619. | B. **R43099** Vintage-Inspired Cross Ring, 15.54mm, 14K Rose, size 7, \$515. | C. **86948** Diamond Cluster Necklace, 1/2 CTW, 12.4x11.1mm, 14K Rose, 124, 33, 16", \$1,595. Mounting **86948**, \$395. | D. **Genuine Mozambique Garnet**, Pear, 6x4mm, AA, \$16.95 | E. **Genuine Pink Tourmaline**, Round, 2.5mm, AA, \$35.04 | F. **72083** Genuine Amethyst Ring, 1- 8x6mm stone, 14K Rose, 43, \$715. Mounting **72083**, \$505 | G. **Chatham® Created Champagne Sapphire**, Oval, 8x6mm, Gem, \$892.50 | H. **86881** Vintage-Inspired Earrings, 26.4x11.2mm, 14K Rose, \$449 per pair.

J. **86926** Diamond Freeform Necklace, 1/2 CTW, 19.5x7.6mm, 14K White, 117, 32, 16-18", \$2,115. Semi-Set **86926**, \$835. Mounting **86926**, \$419. | K. **86922** Vintage-Inspired Geometric Necklace, 12mm, 14K Rose, 18", \$349 | L. **86940** Vintage-Inspired Bar Necklace, 1- 4.5-5mm pearl, 28.3x9.5mm, 14K Yellow, 16, 18" \$465. Mounting **86940** \$435. | M. **R17018** Floral Cross Earrings, 11.7x9.5mm, 14K Yellow, \$755 per pair. | N. **123969** Diamond Bypass Ring, 1/4 CTW, 14K White, 33, \$1,515. Mounting **123969**, \$599.



A. 86854*
Genuine Pink Sapphire and Diamond Necklace, 1- 6x4 stone, 1/6 CTW, 13x7.2mm, 14K White, 70, 33, 16", \$1,135. Semi-Set **86854**, \$735. Mounting **86854**, \$339.

B. 72009*
Genuine Pink Sapphire and Diamond Ring, 1- 5x3mm stone, 1/6 CTW, 14K White, 70, 33, \$929. Semi-Set **72009**, \$775. Mounting **72009**, \$419.

C. 51961
Marquise-Shape Stackable Ring, 4.2mm width, 14K Rose, \$409

D. 71921
Genuine Pink Tourmaline and Diamond Leaf Ring, 5- 2.5mm centers, 0.03 CTW, 14K Yellow, 83, 33, \$955. Semi-Set **71921**, \$659. Mounting **71921**, \$445.

E. 86653
Beaded Disc Necklace, 15.8x10.7mm, 14K Yellow, 16-18", \$475

F. 51836
Stackable Beaded Ring, 5.2mm width, 14K Yellow, \$385

G. 123591
Diamond Stackable Beaded Ring, 0.06 CTW, 14K White, 33, \$709. Mounting **123591**, \$495.

H. 123434
Diamond Stackable Clover Ring, 1/6 CTW, 14K Rose, 33, \$1,389. Mounting **123434**, \$535.

J. 86710
Chatham® Created Ruby and Diamond Floral Necklace, 1- 6.0mm stone, 1/10 CTW, 13.5x5.7mm, 14K Rose, 6, 33, 16-18", \$1,055

K. 653472
Genuine Blue Sapphire and Diamond Ring, 1- 4.0mm center, 1/2 CTW, 14K Rose, 624, 603, \$3,499

L. 653473
Genuine Blue Sapphire and Diamond Ring, 1- 6x5mm center, 1/6 CTW, 14K Yellow, 624, 603, \$2,409.

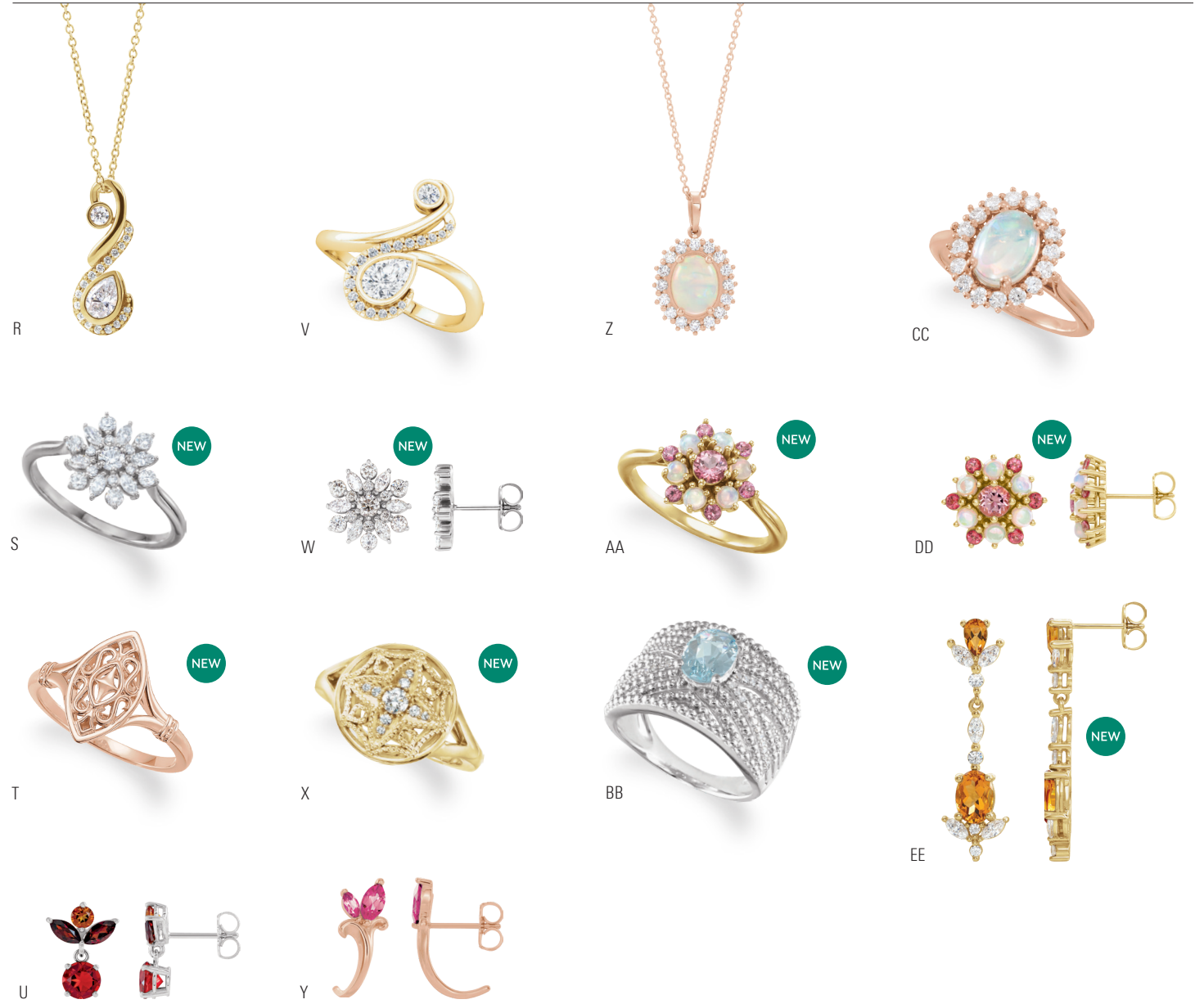
M. 653474
Genuine Blue Sapphire and Diamond Ring, 1- 4.0mm center, 0.04 CTW, 14K White, 624, 603, \$1,399



N. 86732
Vintage-Inspired J-Hoop Earrings, 14.5x7.2mm, 14K Rose, \$585 per pair

P. 86882
Vintage-Inspired Dangle Earrings, 24.3x16mm, 14K Yellow, \$505 per pair

Q. 86876*
Vintage-Inspired Dangle Earrings, 26.3x16mm, 14K White, \$815 per pair



R. 86926
Diamond Freeform Necklace, 1/6 CTW, 19.5x7.6mm, 14K Yellow, 117, 32, 16-18", \$2,115. Semi-Set **86926**, \$839. Mounting **86926**, \$425.

S. 123944*
Diamond Cluster Ring, 1/2 CTW, 14K White, 124, 33, \$1,639. Mounting **123944**, \$485.

T. 51968
Vintage-Inspired Ring, 14.9mm width, 14K Rose, \$465

U. 86874
Multi-Gemstone Earrings, 2- 5.0mm stones, 2- 5x2.5, 1- 3.0mm, 9.9x7.8mm, 14K White, 186, 57, 48, \$645 per pair. Mounting **86874**, \$139 each.

V. 123899
Diamond Bypass Ring, 1- 6x4mm stone, 1/2 CTW, 17.4mm, 14K Yellow, 33, \$2,275. Semi-Set **123899**, \$1,085. Mounting **123899**, \$605.

W. 86947*
Diamond Cluster Earrings, 1 CTW, 12.1x11.1mm, 14K White, 124, 33, \$2,819 per pair. Mounting **86947**, \$255 each.

X. 123412
Diamond Vintage-Inspired Ring, 0.06 CTW, 14K Yellow, 33, \$1,465. Mounting **123412**, \$1,055.

Y. 86815
Genuine Pink Tourmaline J-Hoop Earrings, 2- 6x3, 2- 4x2mm stones, 15.5x6.8mm, 14K Rose, 83, \$659 per pair. Mounting **86815** each, \$179.

Z. 86925
Genuine Cabochon Ethiopian Opal and Diamond Halo-Style Necklace, 1- 9x7mm center, 1/2 CTW, 14K Rose, 32, 60, 16-18", \$1,625. Semi-Set **86925**, \$1,479. Mounting **86925**, \$615.

AA. 72078
Cabochon Genuine Baby Pink Topaz and Ethiopian Opal Floral Ring, 1- 4.0mm center, 6- 2.5, 6- 2.0mm, 14K Yellow, 430, 161, \$1,105. Mounting **72078**, \$619.

BB. 653377
Genuine Aquamarine and Diamond Ring, 1- 8x6mm center, 1/6 CTW, 14K White, 435, 498, \$1,305. Semi-Set **653377**, \$1,245.

CC. 72070
Genuine Cabochon Ethiopian Opal and Diamond Halo-Style Ring, 1- 8x6mm center, 3/8 CTW, 14K Rose, 60, 33, \$1,745. Semi-Set **72070**, \$1,529. Mounting **72070**, \$645.

DD. 86952
Genuine Baby Pink Topaz and Cabochon Ethiopian Opal Earrings, 2- 4.0mm centers, 6- 2.5, 6- 2.0mm, 13.6x12mm, 14K Yellow, 430, 158, \$835 per pair. Mounting **86952**, \$339 each.

EE. 86907
Genuine Citron and Diamond Earrings, 1- 7x5, 2- 5x3mm stones, 3/4 CTW, 33.9mm, 14K Yellow, \$2,965 per pair. Mounting **86907**, \$269 each.



Lavishly Luxurious

Celebrate Valentine's Day by treating yourself to something ornate and on-trend.

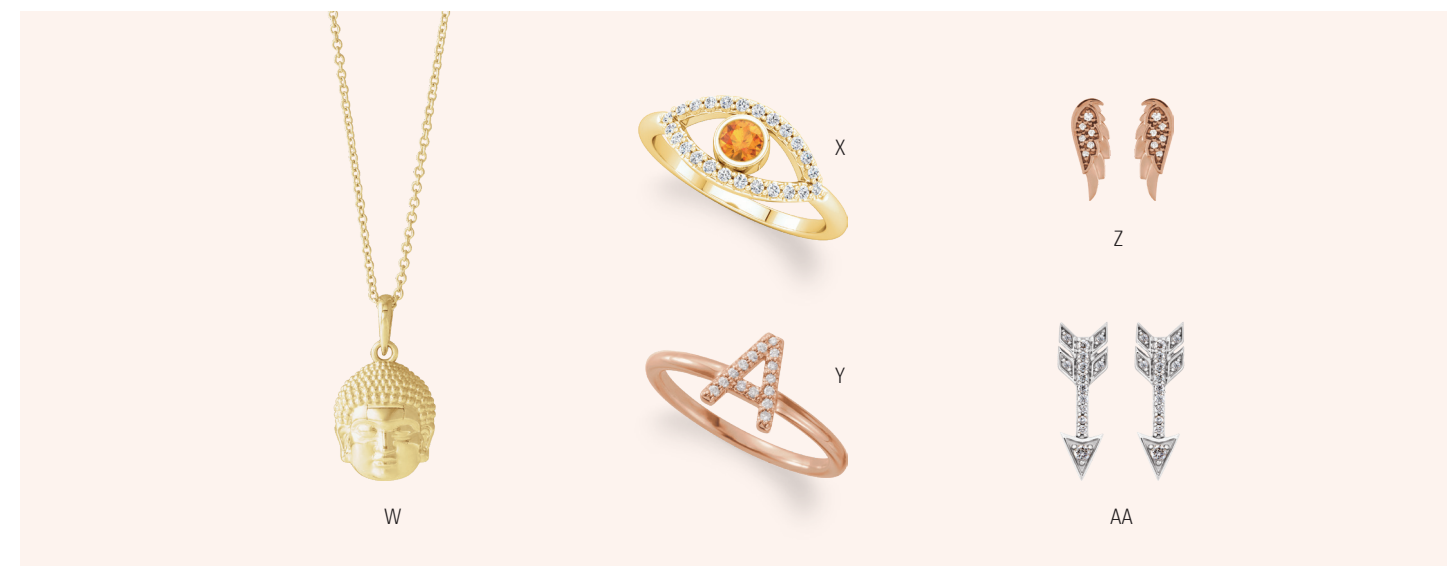
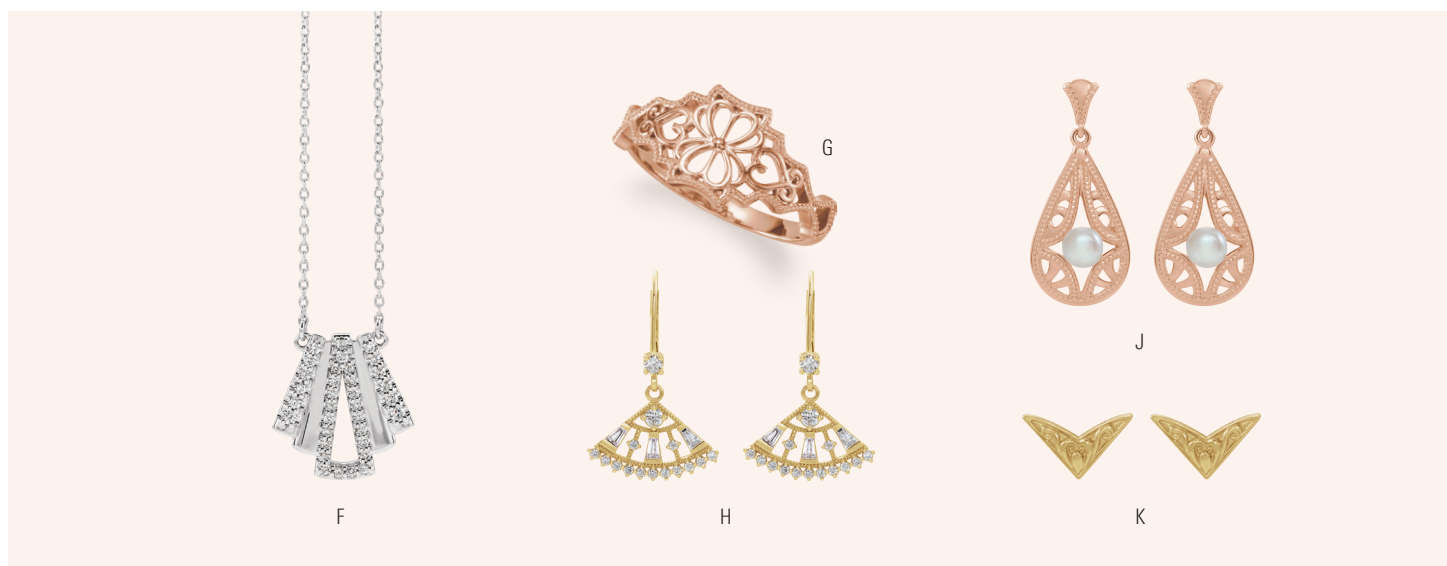
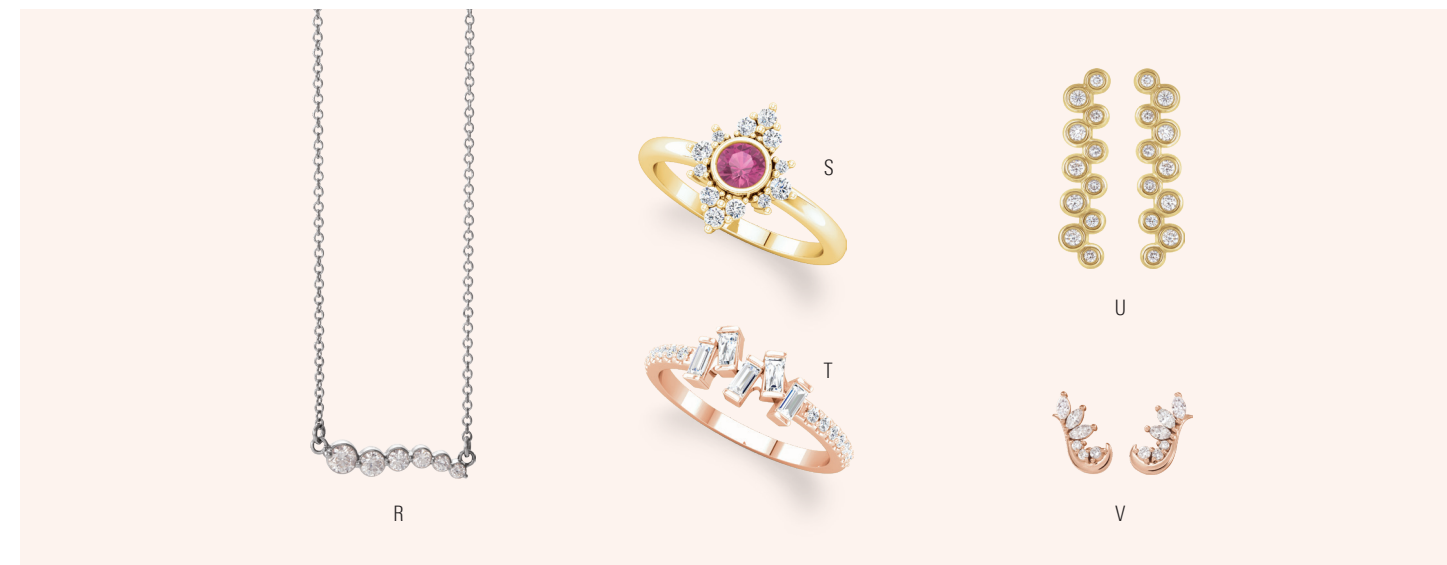


A. **653450** Adjustable 3-Strand Bead Choker, 1.5mm, 14K Yellow, 13-16", \$1,299 | B. **72084** Genuine Citrine and Diamond Halo-Style Ring, 1- 7x5mm center, 3/8 CTW, 14K Yellow, 48, 33, \$1,765. Semi-Set **72084**, \$1,625. Mounting **72084**, \$659. | C. **123966** Diamond Geometric Ring, 1/8 CTW, 14K Rose, 23, \$965. Mounting **123966**, \$519. | D. **86946** Diamond Earring Climbers, 1/4 CTW, 8.9x7.7mm, 14K Rose, 124, 33, \$915 per pair. Mounting **86946**, \$129 each. | E. **86963*** Diamond Vintage-Inspired Earrings, 7/8 CTW, 17.7x13.3mm, 14K White, 33, 22, \$2,365 per pair | F. **86964** Genuine Pink Tourmaline and Diamond Halo-Style Necklace, 1-6.0mm center, 1/8 CTW, 13x5.8mm, 14K Yellow, 83, 23, 16-18", \$1,355. Semi-Set **86964**, \$805. Mounting **86964**, \$339. | G. **86965** Diamond Geometric Necklace, 1/4 CT, 20.9x8.6mm, 14K Rose, 34, 18", \$1,399. Mounting **86965**, \$489. | H. **72073** Genuine Cabochon Ethiopian Opal and Diamond Ring, 1- 2.5mm stones, 0.025 CTW, 14K Yellow, 161, 33, \$939. Mounting **72073**, \$499.

*Indicates item is rhodium plated.



The items featured here are part of 302™ Fine Jewelry. To find out more information or to become an authorized retailer, visit Stuller.com/302FineJewelry.



Facing Page: A. **86902** Diamond Constellation Bar Necklace, 1/10 CTW, 26.8x6.8mm, 14K Yellow, 33, 16", \$565. Mounting **86902**, \$309. | B. **72089** Genuine Pink Tourmaline and Diamond Halo-Style Ring, 1- 4.0mm center, 1/2 CTW, 12.7mm width, 14K Yellow, 83, 33, \$1,269. Semi-Set **72089**, \$955. Mounting **72089**, \$565. | C. **51945** Starburst Ring, 12.1mm width, 14K Rose, \$405. D. **86788** Diamond Geometric Ear Climbers, 0.07 CTW, 15.1x6.2mm, 14K Yellow, 33, \$495 per pair. Mounting **86788**, \$179 each. | E. **86941*** Diamond Crescent Moon Earrings, 1/10 CTW, 9.6x6.4mm, 14K White, 33, \$545 per pair. Mounting **86941**, \$149 each. | F. **86916*** Diamond Art Deco Necklace, 1/4 CTW, 15.3x14.7mm, 14K White, 33, 16", \$1,155. Mounting **86916**, \$509. | G. **51971** Vintage-Inspired Heart Ring, 11.7mm width, 14K Rose, \$485 | H. **86963** Vintage-Inspired Diamond Earrings, 3/4 CTW, 17.7x13.3mm, 14K Yellow, 33, 22, \$2,375 per pair. Mounting **86963**, \$519 each. | J. **86932** White Freshwater Cultured Pearl Vintage-Inspired Earrings, 2- 4.0mm, pearls, 26.1x11mm, 14K Rose, 16, \$655 per pair. Mounting **86932**, \$345 each. | K. **86936** Sculptural V Earrings, 12x7.1mm, 14K Yellow, \$245 per pair | L. **86930*** Diamond Art Deco Necklace, 1/2 CTW, 17.7x6.9mm, 14K White, 21, 32, 16-18", \$1,279. Mounting **86930**, \$329. | M. **51924** Geometric Ring, 5mm width, 14K Yellow, \$505 | N. **86951** Genuine Multicolor Sapphire Bar Earrings, 8- 2.5mm stones, 12.4x2.9mm, 14K Yellow, 513, 71, 70, 67, \$595 per pair | P. **86966** Diamond Geometric Earrings, 1/2 CTW, 19.5x7.9mm, 14K Rose, 34, \$1,355 per pair. Mounting **86966**, \$665 each. | Q. **86906** Genuine Ruby Bar Earrings, 2- 2.5mm stones, 18.6x1.8mm, 14K Yellow, 66, \$455. per pair. Mounting **86906**, \$109 each.

Above: R. **86860*** Diamond Curvy Graduated Necklace, 1/4 CTW, 17.4x3.8mm, 14K White, 33, 18", \$955. Mounting **86860**, \$315. | S. **72089** Genuine Pink Tourmaline and Diamond Halo-Style Ring, 1- 4.0mm center, 1/2 CTW, 14K Yellow, 83, 33, \$1,269. Semi-Set **72089**, \$955. Mounting **72089**, \$565. | T. **123946** Diamond Band, 3/16 CTW, 14K Rose, 21, 23, 32, \$1,589. Mounting **123946**, \$405. U. **86934** Diamond Bezel-Set Earrings, 1/2 CTW, 21x4.7mm, 14K Yellow, 33, \$1,389 per pair. Mounting **86934**, \$275 each. | V. **86946** Diamond Earring Climbers, 1/4 CTW, 8.9x7.7mm, 14K Rose, 124, 33, \$915 per pair. Mounting **86946**, \$129 each. | W. **86871** Meditation Buddha Necklace, 14.7x10.5mm, 14K Yellow, 16-18", \$519 | X. **72064** Genuine Citrine and White Sapphire Evil Eye Ring, 7.9mm width, 1- 3.5mm center, 1/2 CTW, 14K Yellow, 48, 513, \$1,159. Semi-Set **72064**, \$1,115. Mounting **72064**, \$469. Y. **123834** Diamond Initial Ring, 8.3mm width, 0.07 CTW, 14K Rose, 33, \$675. Mounting **123834**, \$375. | Z. **86909** Diamond Angel Wing Stud Earrings, 0.04 CTW, 10.7x3.7mm, 14K Rose, 33, \$369 per pair. Mounting **86909**, \$119 each. | AA. **652435** Diamond Arrow Earrings, 1/2 CTW, 16.9x5.2mm, 14K White, 545, \$819 per pair.





Growing On You

Personalized jewelry leaves an impression that's uniquely you.

A. **Genuine Pink Sapphire**, Marquise, 4x2mm, AA, \$58.32 | B. **Genuine Amethyst**, Heart, 4x4mm, A, \$12.60 | C. **86933** Family Necklace Mounting for Heart-Shape Stones, 3- 4x4mm stones, 15x5.1mm, 14K Rose, 16", \$815. | D. **Genuine Ruby**, Heart, 4x4mm, AA, \$1,192.32 | E. **85088*** Posh Mommy™ Diamond Initial Pendant, 1/8 CTW, 20.5x17.2mm, 14K White, 33, \$979. Mounting. Shown with **CH227**. | F. **653424** Script Couples Nameplate Necklace, 20x6.6mm, 14K Rose, 18", \$669 | G. **86797** Diamond Initial Earring, 0.07 CTW, 8.3x7.2mm, 14K Yellow, 33, \$345 each. Mounting **86797**, \$115 each. | H. **Genuine Mozambique Garnet**, Round, 1.5mm, AA, \$8.34 | J. **Genuine Mozambique Garnet**, Round, 2.25mm, AA, \$7.89 | K. **86774** Engravable Heart Necklace, 12x11mm, 14K Rose, 16-18", \$369 | L. **Genuine Rhodolite Garnet**, Round, 3mm, AA, \$21.42 | M. **86830** Family Bar Earring Mountings for Round-Shape Stones, 3- 2.0mm stones, 10.2x2.5mm, 14K Rose, \$155 each. Shown with backs **1912**. | N. **51895** Initial Ring, 8mm width, 14K Rose, \$329. | P. **123834*** Diamond Initial Ring, 0.08 CTW, 14K White, 33, \$705. Mounting **123834**, \$379.

Q. **86844*** Engravable Beaded Earrings, 12.9x10mm, 14K White, \$575 per pair. | R. **652270** Diamond Engravable Necklace, 1/8 CTW, 18x14.4mm, 14K Yellow, 33, 18", \$915 | S. **BRC764** Genuine Amethyst Cuff Bracelet, 1- 3.0mm stone, 14K Yellow 43, 8", \$2,049. Mounting **BRC764**, \$1,565. | T. **72077** Genuine Pink Tourmaline V Ring, 1- 2.3, 2- 2.0, 2- 1.8, 2- 1.5mm stones, 6.7mm width, 14K Yellow, 83, \$699. Mounting **72077**, \$429. | U. **R42377** Genuine Ruby Cross Necklace, 5- 4x2mm stones, 14.7x10.6mm, 14K White, 66, 16-18", \$919. Mounting **R42377**, \$319. | V. **653427** Diamond Script Nameplate Necklace, .01 CTW, 20x6.6mm, 14K White, 619, 18", \$585 | W. **86597** Diamond Engravable Bar Necklace, 0.03 CT, 20x5mm, 14K Yellow, 33, 16-18", \$479. Mounting **86597**, \$439.

PERSONALIZED JEWELRY

A. 86634
Engravable Scroll Disc Necklace,
16.6mm, 14K Yellow, 16-18", \$925

B. 653447
Diamond Monogram Bar Necklace,
0.05 CTW, 13.5x5.5mm, 14K White,
619, 18", \$805

C. 653446
Birthstone Two-Letter Script Monogram
Necklace, 1- 1.5mm stone, 13mm,
14K Rose, 361, 18", \$585



A side detail

B

C



D

E

F

D. 653428
Script Monogram Necklace with Brushed Finish,
30x20mm, 14K Rose, 18", \$955

E. 653426
Diamond Infinity Script Nameplate Necklace,
0.015 CT, 30x11.4mm, 14K Yellow, 619, 18", \$775

F. 652581
Three-Letter Script Monogram Necklace,
20mm, 14K White, 18", \$709

G. 653429
Three-Letter Oval Monogram Necklace,
35x22mm, 14K White, 18", \$1,579

H. 653444
Diamond Couples Name Necklace,
0.05 CTW, 44x5mm, 14K Rose, 619, 18", \$1,299

J. 652592
Diamond Halo-Style Three-Letter Script
Monogram Necklace, 1/2 CTW,
28mm, 14K Yellow, 619, 18", \$2,735



G

H

J

K. 51803
Oval Signet Ring, 13.1x5.5mm,
14K Yellow, \$595

L. 51420
Script Nameplate Ring, 7mm width,
14K White, \$625

M. 51317
Three-Letter Script Monogram Ring,
18mm width, 14K Rose, \$1,189



K

L

M

FAMILY JEWELRY

86983
Family Necklace Mounting
for Marquise-Shape Stones,
30.8x3.9mm, 14K Yellow, 16-18".
Available with 1-6 stones.
Made with **CH123**.

1- 4x2mm stones, \$355

3- 4x2mm stones, \$379

5- 4x2mm stones, \$415

72058
Family Ring Mounting with Accents for
Baguette-Shape Stones, 14K Yellow.
Available with 1-6 stones.

2- 4x2, 15- 1.3mm
stones, \$695.
Semi-Set, 1/4 CTW, 33, \$1,129.

4- 4x2, 15- 1.3mm
stones, \$745.
Semi-Set, 1/4 CTW, 33, \$1,179.

6- 4x2, 15- 1.3mm
stones, \$789.
Semi-Set, 1/4 CTW, 33, \$1,225.

72087
Family Ring Mounting for
Round-Shape Stones, 14K Rose.
Available with 1-6 stones.

4- 2.0mm stones,
\$419

5- 2.0mm stones,
\$429

6- 2.0mm stones,
\$445

72071*
Family Ring Mounting with Accents
for Marquise-Shape Stones, 14K White.
Available with 1-6 stones.

1- 4x2, 1- 1.7mm
stones, \$399.
Semi-Set, 0.025 CT, 33, \$475.

3- 4x2, 3- 1.7mm
stones, \$405.
Semi-Set, 0.06 CTW, 33, \$555.

5- 4x2, 5- 1.7mm
stones, \$455.
Semi-Set, 1/4 CTW, 33, \$675.

86915
Family Earring Mounting for
Baguette-Shape Stones, 14K Yellow.
Available with 1-3 stones.

1- 4x2mm stones,
5.9x5.9mm, \$125 each

2- 4x2mm stones,
9.5x7.1mm, \$179 each

3- 4x2mm stones,
13.1x8.3mm, \$235 each

*Indicates item is rhodium plated.

BIRTHSTONE JEWELRY



86750*
Chatham® Created Ruby and Diamond
Necklace, 1- 6×4mm stone, 0.025 CTW,
5.4×11.6mm, 14K White, 6, 33, 16", \$655.
Mounting **86750**, \$319.



86706
Genuine Pink Tourmaline and Diamond
Bar Necklace, 3- 2.25mm stones, 0.08 CTW,
20.4×3.4mm, 14K Yellow, 83, 16-18", \$689.
Semi-Set **86706**, \$605. Mounting **86706**, \$405.



86793
Genuine Citrine and Diamond Necklace,
1- 5.0, 1- 2.5mm stones, 0.06 CT, 13×7.1mm,
14K Rose, 48, 33, 18", \$569. Semi-Set **86793**, \$539.
Mounting **86793**, \$409.

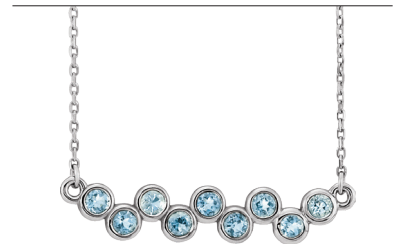


86790
Genuine Blue Sapphire and Diamond Bar Necklace,
4- 4×2mm stones, 1/2 CTW, 31.7×3.5mm, 14K Yellow,
67, 33, 16-18", \$1,565. Mounting **86790**, \$409.



86612
Genuine Blue Zircon Three-Stone Bar Necklace,
3- 3.0mm stones, 16.8×6.9mm, 14K Rose, 46,
16-18", \$529. Mounting **86612**, \$435.

BIRTHSTONE JEWELRY



86525*
Genuine Aquamarine Bar Necklace, 9- 2.5mm
stones, 30.4×5.8mm, 14K White, 45, 16", \$909.
Mounting **86525**, \$505.



A. 2000028*
Genuine Mozambique Garnet and Diamond
Halo-Style Earrings, 2- 4.0mm centers, 0.08 CTW,
6.5mm, 14K White, 57, 33, \$509 per pair.
Semi-Set **2000028**, \$495 per pair. Mounting **2000028**, \$69 each.



B. 86839
Diamond Halo-Style Earrings, 5/8 CTW,
6.7mm, 14K Rose, 33, \$2,345 per pair.
Semi-Set **86839**, \$675 per pair. Mounting **86839**, \$139 each.



C. 86888
Genuine Ruby and Diamond Earrings,
2- 3.0mm stones, 0.03 CTW, 7.46×4.53mm,
14K Yellow, 66, 33, \$825 per pair.
Semi-Set **86888**, \$385 per pair. Mounting **86888**, \$149 each.



D. 86789*
Genuine Pink Tourmaline and Diamond Hoop
Earrings, 8- 4×2mm stones, 1/2 CTW, 17.3×2.6mm,
14K White, 83, 33, \$1,815 per pair.
Semi-Set **86789**, \$1,435 per pair. Mounting **86789**, \$275 each.



E. 2000028
Genuine Amethyst and Diamond Halo-Style Earrings,
2- 5.0mm centers, 1/4 CTW, 7.9mm, 14K Yellow,
43, 33, \$965 per pair. Semi-Set **2000028**, \$925 per pair.
Mounting **2000028**, \$89 each.



F. 86839*
Genuine Emerald and Diamond Halo-Style Earrings,
2- 5.0mm centers, 1/4 CTW, 8.4×8.38mm, 14K White,
51, 33, \$5,455 per pair. Semi-Set **86839**, \$985 per pair.
Mounting **86839**, \$195 each.



G. 86888
Genuine Peridot and Diamond Earrings,
2- 4.0mm stones, 0.06 CTW, 9.3×5.9mm,
14K Rose, 61, 33, \$549 per pair.
Semi-Set **86888**, \$509 per pair. Mounting **86888**, \$199 each.



H. 86789
Genuine Citrine and Diamond Hoop Earrings,
8- 4×2mm stones, 1/2 CTW, 17.3×2.6mm, 14K Yellow,
48, 33, \$1,549 per pair. Semi-Set **86789**, \$2,965 per pair.
Mounting **86789**, \$279 each.



J. 2000028
Genuine Aquamarine and Diamond Halo-Style Earrings,
2- 6.0mm centers, 1/2 CTW, 10.3mm, 14K Rose, 45, 33,
\$2,415 per pair. Semi-Set **2000028**, \$17,119 per pair.
Mounting **2000028**, \$139 each.



K. 86839
Chatham® Created Alexandrite and Diamond Halo-Style
Earrings, 2- 6.0mm centers, 1/2 CTW, 9mm,
14K Yellow, 2, 33, \$1,859 per pair. Semi-Set **86839**, \$1,135 per pair.
Mounting **86839**, \$209 each.



L. 86888*
Genuine Blue Sapphire and Diamond Earrings,
2- 5.0mm stones, 1/8 CTW, 11.1×7.2mm, 14K White,
67, 33, \$3,445 per pair. Semi-Set **86888**, \$775 per pair.
Mounting **86888**, \$289 each.



M. 86789
Genuine Tanzanite and Diamond Hoop Earrings,
8- 4×2mm stones, 1/2 CTW, 17.3×2.6mm, 14K Rose,
156, 33, \$1,785 per pair. Semi-Set **86789**, \$1,439 per pair.
Mounting **86789**, \$279 each.



N. 123288*
Genuine Mozambique Garnet Stackable Ring,
6- 1.75mm stones, 1.7mm width, 14K White, 57, \$515.
Mounting **123288**, \$375.



P. 71876
Diamond Stackable Ring, 1/2 CTW, 4mm width,
14K Rose, 33, \$1,109. Mounting **71876**, \$405.



Q. 71997
Genuine Ruby Bezel-Set Ring, 5- 2.5mm stones,
3.8mm width, 14K Yellow, 66, \$1,065.
Mounting **71997**, \$459.



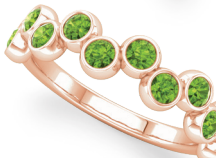
R. 72051*
Genuine Pink Tourmaline and Diamond Stackable Ring,
5- 2.5mm stones, 1/2 CTW, 14K White, 83, 33, \$1,155.
Semi-Set **72051**, \$859. Mounting **72051**, \$389.



S. 72077
Genuine Amethyst V Ring,
1- 2.3, 2- 2.0, 2- 1.8, 2- 1.5 mm stones,
6.7mm width, 14K Yellow, 43, \$629.
Mounting **72077**, \$429.



T. 72046*
Genuine Emerald Stackable Ring,
7- 2.0mm stones, 3.3mm width, 14K White,
51, \$1,325. Mounting **72046**, \$505.



U. 71894
Genuine Peridot Bezel-Set Ring,
12- 2.5mm stones, 14K Rose, 61, \$995.
Mounting **71894**, \$559.



V. 71883
Genuine Citrine and Diamond Stackable Ring,
1- 6×4mm center, 0.025 CTW, 14K Yellow,
48, 33, \$509. Semi-Set **71883**, \$489. Mounting **71883**, \$425.



W. 72022
Genuine Aquamarine Stackable Ring,
1- 2.25, 2- 2.0, 2- 1.8, 2- 1.5mm stones,
2.4mm width, 14K Rose, 45, \$665. Mounting **72022**, \$365.



X. 71888
Genuine Alexandrite Stackable Ring, 6- 1.75mm,
14K Yellow, 591, \$969. Mounting **71888**, \$395.



Y. 72006*
Genuine Blue Sapphire and Diamond Ring,
1- 5.0mm stone, 0.06 CT, 14K White, 67, 33, \$2,265.
Semi-Set **72006**, \$715. Mounting **72006**, \$565.



Z. 72088
Genuine Blue Zircon and Diamond Halo-Style Ring,
1- 4.0mm center, 1/8 CTW, 14K Rose, 46, 33, \$999.
Semi-Set **72088**, \$869. Mounting **72088**, \$435.

The Tradition Continues

Classic styles transcend the garden of time adding a tasteful touch to any look.



A. **29762** Diamond Cocktail-Style Stud Earrings, 1 CTW, 14K White, 33, \$5,375 per pair. Mounting **29762**, \$45 each. | B. **61671** Panache® White Freshwater Cultured Pearl, 5.5-6.0mm pearls, 14K Yellow, 90, 18", \$269 | C. **68577** Diamond 5-Station Necklace, ¾ CTW, 14K White, 545, 18", \$2,809 | D. **653537** Diamond Bracelet, 1 CTW, 2.3mm width, 14K White, 110, 7", \$4,409 | E. **BRC1** Half-Round Bangle Bracelet, 4mm, 14K Yellow, 7½", \$1,289 | F. **BRC760** Rope Cuff Bracelet, 5.8mm, 14K Rose, 7", \$1,185 | G. **86996** Freeform Leaf Earrings, 12x6mm, 14K Rose, \$225 per pair

PEARL ESSENTIALS



A

B

C



61103*
White Akoya Cultured Pearl Earrings,
14K White, 528. Mounting **61103**, \$189 each.

2- 4.0mm pearls,
\$99 per pair

2- 5.0mm pearls,
\$135 per pair

2- 6.0mm pearls,
\$189 per pair

2- 7.0mm pearls,
\$259 per pair



D



F



H



E



G



J



K

A. **86747**
White Freshwater Cultured
Pearl Necklace, 1- 6.0mm pearl,
9.2x6.2mm, 14K Rose, 16,
16-18", \$349

B. **86625***
White Freshwater Cultured Pearl and
Diamond Halo-Style Pendant, 1- 6.5mm
pearl, ⅓ CTW, 17.1x8.9mm, 14K White,
16, 33, \$779. Semi-Set **86625**, \$299.
Mounting **86625**, \$669. Shown with CH132.

C. **652839**
White Freshwater Cultured Pearl
Necklace, 1- 4.0mm pearl, 14K Yellow
16-18", 316, \$305

D. **653546**
White Freshwater Cultured Pearl
Dangle Earrings, 2- 6.5mm pearls,
30.1x6.8mm, 14K Yellow, 314,
\$469 per pair. Mounting **653546**, \$415 each.

E. **6518***
White Freshwater Cultured Pearl
Stackable Ring, 9- 2.5mm pearls,
14K White, 16, \$465. Mounting **6518**, \$289.

F. **86485**
White Freshwater Cultured Pearl
and Diamond Leaf Earring, 2- 6.0mm
pearls, 0.07 CTW, 8.1x7.1mm, 14K Rose,
16, 33, \$549 per pair. Mounting **86485**, \$165 each.

G. **6510**
White Freshwater Cultured Pearl
Two-Stone Bypass Ring, 2- 4.5mm pearls,
⅓ CTW, 14K Yellow, 16, 33, \$849.
Semi-Set **6510**, \$829. Mounting **6510**, \$385.

H. **86718**
White Freshwater Cultured Pearl
Earrings, 2- 7.0-7.5, 2- 6.0mm pearls,
12.6x6.2mm, 14K Yellow, 16,
\$485 per pair. Mounting **86718**, \$199 each.

J. **6496**
White Freshwater Cultured Pearl Ring,
1- 6.0mm pearl, 14K Yellow, 16, \$825.
Mounting **6496**, \$779.

K. **6511**
White Freshwater Cultured Pearl
and Diamond Ring, 1- 6-6.5mm pearl,
⅓ CTW, 14K Rose, 16, 33, \$1,595.
Semi-Set **6511**, \$1,569. Mounting **6511**, \$615.

*Indicates item is rhodium plated.



86617 Rectangle Necklace, 14.4x5.6mm, 14K Yellow, 16-18", \$325
86741 Freeform Necklace, 25.2x8.5mm, 14K Rose, 16-18", \$455
86645* Twisted Ribbon Bar Necklace, 36.4x2.2mm, 14K White, 16-18", \$389
86734 Freeform Necklace, 20x7.4mm, 14K Yellow, 16-18", \$405
86539 Beaded Bar Necklace, 36.9x4.1mm, 14K Rose, 16-18", \$425
86610 Rope Interlocking Circle Necklace, 21.1x11.6mm, 14K Yellow, 16-18", \$435



R42381* Genuine Multi-Colored Gemstone Necklace, 7- 1.5mm stones, 14.7x9.2mm, 14K White, 303, 63, 45, 66, 67, 71, 535, 16-18", \$479.
R42378 Genuine Cabochon White Opal Cross Necklace, 5- 5x3mm stones, 24.5x13.4mm, 14K Rose, 60, 16-18", \$619. Mounting **R42378**, \$539.
R45397 Petite Cross Necklace, 12x8.75mm, 14K Yellow, 16-18", \$425
R42373 Diamond Cluster Cross Necklace, 0.07 CTW, 13x9mm, 14K Rose, 33, 16-18", \$549. Mounting **R42373**, \$379.
R42359* Diamond Cross Necklace, ¼ CTW, 14.7x10.6mm, 14K White, 33, 16-18", \$919



A. 653550 Twisted Dangle Earrings, 38x6mm, 14K Yellow, \$809 per pair
B. 86502* Beaded Hoop Earrings, 10.3x4.3mm, 14K White, \$415 per pair
C. 86684 Beaded Hoop Earrings, 14.5x2.5mm, 14K Yellow, \$395 per pair
D. 86731 Vintage-Inspired Hoop Earrings, 20x2mm, 14K Rose, \$785 per pair
E. 51815* Bypass Freeform Ring, 12.6mm width, 14K White, \$889
F. 51829 Stackable Bar Ring, 6.5mm width, 14K Two-Tone, \$395
G. 51779 Stackable Beaded Ring, 1.9mm width, 14K Yellow, \$265
H. 51807 Stackable Beaded Ring, 2.6mm width, 14K Rose, \$385
J. R17023 Diamond Cross Earrings, ½ CTW, 9.6x8.7mm, 14K Rose, 124, \$1,015 per pair. Mounting **R17023**, \$109 each.
K. R17020* Genuine Pink Tourmaline Cross Earrings, 2- 1.5mm stones, 7.3x5mm, 14K White, 83, \$279 per pair. Mounting **R17020**, \$139 each.
L. R17024 Diamond Cross Earrings, 0.01 CTW, 7x5mm, 14K Rose, 33, \$229 per pair. Mounting **R17024**, \$99 each.
M. 86809 Cross Hoop Earrings, 11.8x6.3mm, 14K Yellow, \$285 per pair
N. R43096* Diamond Stackable Cross Ring, ⅓ CTW, 6.5mm width, 14K White, 33, \$929. Mounting **R43096**, \$509.
P. R43095 Stackable Cross Ring with Milgrain, 4.6mm width, 14K Rose, \$409
Q. R43094* Genuine Aquamarine Stackable Cross Ring, 21- 1.5mm stones, 5.1mm width, 14K White, 45, \$1,415. Mounting **R43094**, \$579.
R. R43075 Diamond Cross Ring, 0.03 CTW, 14K Yellow, 33, \$619. Mounting **R43075**, \$405.

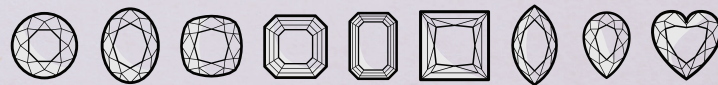
*Indicates item is rhodium plated.



Our flexible 3C designs feature easy built-in customization that lets you see real-time changes as you adjust a style to create the ring or pendant of your dreams.

1

Choose a Shape



Every 3C design is available with a wide range of shapes.

2

Choose a Stone Type

Our selection boasts more than 100 stone types, guaranteeing you always find your desired diamond or gemstone.

3

Choose a Size



Choose from a broad array of standard gem sizes.

4

Choose a Metal Quality



All 3C designs are available in 13 metal qualities.



Thriving Color

Take your custom design from dainty floret to full bloom.

No matter the look you're cultivating, be it trendy, vintage, or sophisticated, flexible 3C designs have something for you.



- A. **Genuine Citrine**, Marquise, 10x5mm, AA, \$31.53 | B. **Genuine Pink Tourmaline**, Oval, 9x7mm, AA, \$1,735.65
- C. **86900** Oval-Shape Pendant Mounting with Accents, 1- 7x5mm stone, 2- 1.2, 2- 1.1, 2- 1.0, 2- 0.9mm (0.04 CTW), 8.9x2.7mm bail ID, 14K Yellow, \$285. Semi-Set **86900**, \$539. Shown with **CH227**. | D. **86827** Round-Shape Pendant Mounting with Accents, 1- 7.0mm center, 18- 0.8mm (0.05 CTW), 4.8x3.4mm bail ID, 14K Yellow, \$325. Semi-Set **86827**, \$555. Shown with **CH12**
- E. **72034** Marquise-Shape Ring Mounting with Accents, 1- 9x4.5mm stone, 1- 3.0mm (1/10 CT), 10.1mm width, 14K Rose, \$505. Semi-Set **72034**, \$795. | F. **72048** Round-Shape Ring Mounting with Accents, 1- 7.0mm center, 14- 1.6mm (1/4 CTW), 6.9mm width, 14K Yellow, \$799. Semi-Set **72048**, \$1,495. | G. **Genuine Rhodolite Garnet**, Antique Cushion, 10x8mm, AA, \$629.37 | H. **Genuine London Blue Topaz**, Antique Square, 12x12mm, AA, \$600.81
- J. **Genuine Tanzanite**, Trillion, 6.5mm, AAA, \$1,110.12

3C

Customization at the Tip of Your Fingers

Exceed your expectations with 3C technology. From center stone shape to size or metal quality, you have the power to take your idea from bud to blossom.

A. **Genuine Orange Sapphire**, Oval, 1-2 CT, eye-clean. Call for pricing. | B. **72065** Square-Shape Ring Mounting with Accents, 1- 7x7mm center, 2- 2.0mm, 8.2mm width, 14K White, \$629. Semi-Set **72021**, 33, \$815. | C. **Genuine Morganite**, Antique Square, 3-4 CT, eye-clean, Call for pricing. | D. **72042** Oval-Shape Ring Mounting, 1- 8x6mm stone, 8.6mm width, 14K Rose, \$515. E. **72075** Pear-Shape Ring Mounting with Accents, 1- 8x6mm center, 16- 1.5, 15- 1.4, 2- 1.1mm, 12mm width, 14K White, \$735. Semi-Set **72075**, ¼ CTW, 33, \$2,379. | F. **72012** Emerald-Shape Bezel-Set Ring Mounting, 1- 8.0mm stone, 9.9mm width, 14K Rose, \$905

G. **Genuine Aqua**, Emerald/Octagon, 2-3 CT, eye-clean, Call for pricing. | H. **Genuine Emerald**, Oval, 1-2 CT, included, Call for pricing. | J. **72021** Round-Shape Solitaire Ring Mounting, 1- 7.0mm stone, 8.9mm width, 14K Yellow, \$609 | K. **71863** Emerald-Shape Ring Mounting, 1- 7x5mm stone, 5.44mm width, 14K Rose, \$425. | L. **72013** Round-Shape Bezel-Set Ring Mounting with Accents, 1- 6.0mm center, 28- 1.3mm, 10.5mm width, 14K Yellow, \$715. Semi-Set **72013**, ¼ CTW, 33, \$1,655. | M. **Genuine Blue Sapphire**, Pear, 2-3 CT, eye-clean, Call for pricing.



N
Available stone shapes:
○ ○ ○ ○ ○ □



Q
Available center stone shapes:
○ ○ ○ ○ ○ □ ○



S
Available center stone shapes:
○ ○ ○ ○ ○ □



P
Available center stone shapes:
○ ○ ○ ○ ○ □



R
Available center stone shapes:
○ ○ ○ ○ ○ □ ○



T
Available center stone shapes:
○ ○ ○ ○ ○ □

N. **72016***
Round-Shape Solitaire Ring Mounting,
1- 7.0mm stone, 8.6mm width, 14K White, \$479
P. **72079**
Round-Shape Ring Mounting with Accents,
1- 7.0mm center, 2- 1.9, 2- 1.8, 2- 1.75,
2- 1.7, 4- 1.6, 2- 1.5, 2- 1.2mm, 6.9mm width,
14K Rose, \$509. Semi-Set **72079**, ¼ CTW, 33, \$1,499.

Q. **72018**
Emerald-Shape Ring Mounting with Accents,
1- 7x5mm center, 2- 1.9mm, 7.5mm width,
14K Yellow, \$425. Semi-Set **72018**, 0.06 CTW, 33, \$589.
R. **71862***
Pear-Shape Halo-Style Ring Mounting, 1- 7x5mm
center, 28- 0.8mm, 11.3mm width, 14K White, \$535.
Semi-Set **71862**, 0.07 CTW, 33, \$885.

S. **72065**
Oval-Shape Ring Mounting with Accents,
1- 8x6mm center, 2- 1.8mm, 6.1mm width,
14K Rose, \$579. Semi-Set **72065**, 0.05 CTW, 33, \$745.
T. **72075**
Oval-Shape Halo-Style Ring Mounting with
Accents, 1- 8x6mm center, 16- 1.5, 15- 1.4,
2- 1.1mm, 12mm width, 14K Yellow, \$735.
Semi-Set **72075**, ¼ CTW, 33, \$2,375.



U
Available center stone shapes:
○ ○ ○ ○ ○ □



V
Available stone shapes:
○ ○ ○ ○ ○ □ ○

U. **72054***
Emerald-Shape Ring Mounting with Accents,
1- 7x5mm center, 46- 1.3mm, 9.4mm width,
14K White, \$815. Semi-Set **72054**, ½ CTW, 33, \$2,905.
V. **72025**
Pear-Shape Ring Mounting, 1- 8x5mm stone,
9.4mm width, 14K Rose, \$605



W
Available center stone shapes:
○ ○ ○ ○ ○ □



X
Available center stone shapes:
○ ○ ○ ○ ○ □ ○

W. **72048**
Oval-Shape Ring Mounting with Accents,
1- 8x6mm center, 14- 1.6mm, 7.9mm width,
14K Yellow, \$795. Semi-Set **72048**, ¼ CTW, 33, \$1,492.
X. **72034**
Oval-Shape Ring Mounting with Accents,
1- 8x6mm center, 1- 2.7mm, 10.5mm width,
14K White, \$519. Semi-Set **72034**, 0.07 CT, 33, \$709.



Y
Available center stone shapes:
○ ○ ○ ○ ○ □



Z
Available center stone shapes:
○ ○ ○ ○ ○

Y. **72049**
Round-Shape Ring Mounting with Accents,
1- 7.0mm center, 50- 1.2mm, 14.9mm width,
14K Rose, \$989. Semi-Set **72049**, ¾ CTW, 33, \$2,225.
Z. **72043***
Marquise-Shape Two-Stone Ring Mounting with
Accents, 2- 8x4mm center, 9- 2.25mm, 7.6mm width,
14K Yellow, \$585. Semi-Set **72043**, ¼ CTW, 33, \$1,609.



NEW

86896
Emerald-Shape Halo-Style Pendant Mounting,
1- 7×5mm center, 18- 1.3mm, 12×10mm, 2.1×1.8mm
slide ID, 14K Yellow, \$359. Semi-Set **86896**, 1/2 CTW, 33, \$975.

72067
Emerald-Shape Halo-Style Ring Mounting,
1- 7×5mm center, 18- 1.3mm, 12mm width,
14K Yellow, \$675. Semi-Set **72067**, 1/2 CTW, 33, \$1,289.

Available center stone shapes:



86864*
Oval-Shape Pendant Mounting with Accents,
1- 8×6mm center, 2- 1.0mm, 15.2×9.8mm, 5.9×2.2mm
bail ID, 14K White, \$425. Semi-Set **86864**, 0.01 CTW, 33, \$479.

72036*
Oval-Shape Ring Mounting with Accents,
1- 8×6mm center, 2- 1.0mm, 14.8mm width,
14K White, \$709. Semi-Set **72036**, 0.01 CTW, 33, \$765.

Available center stone shapes:



NEW

86898
Pear-Shape Halo-Style Pendant Mounting,
1- 7×5mm center, 16- 1.3mm, 12.3×10mm, 1.9×1.8mm
slide ID, 14K Yellow, \$335. Semi-Set **86898**, 1/2 CTW, 33, \$885.

72068
Pear-Shape Halo-Style Ring Mounting,
1- 7×5mm center, 16- 1.3mm, 12.3mm width,
14K Yellow, \$655. Semi-Set **72068**, 1/2 CTW, 33, \$1,199.

Available center stone shapes:



86786*
Round-Shape Halo-Style Pendant Mounting,
1- 6.0mm center, 16- 0.9, 15×10.7mm, 4.6×2.5mm bail ID,
14K White, \$379. Semi-Set **86786**, 0.04 CTW, 33, \$589.

72000*
Round-Shape Halo-Style Ring Mounting,
1- 6.0mm center, 16- 0.9mm, 10.6mm width, 14K White, \$729.
Semi-Set **72000**, 0.04 CTW, 33, \$939.

Available center stone shapes:



NEW

87009
Round-Shape Pendant Mounting with Accents,
1- 6.0mm center, 4- 1.6, 3- 1.3, 11.8×5.5mm, 4.3×2.1mm
bail ID, 14K Rose, \$359. Semi-Set **87009**, 1/10 CTW, 33, \$665.

72066
Round-Shape Ring Mounting with Accents,
1- 6.0mm center, 4- 1.6, 2- 1.3, 4- 1.2mm, 9.8mm width,
14K Rose, \$625. Semi-Set **72066**, 1/2 CTW, 33, \$995.

Available center stone shapes:



86894
Square-Shape Pendant Mounting,
1- 6×6mm stone, 14.8×10.5mm, 4.7×1.8mm
bail ID, 14K Yellow, \$339

72055
Square-Shape Ring Mounting,
1- 6×6mm stone, 13.1mm width,
14K Yellow, \$585

Available stone shapes:



86856
Round-Shape Pendant Mounting with Accents,
1- 6.0mm center, 1- 1.3, 7- 1.0, 1- 0.8, 12.7×10.1mm,
4×1.8mm bail ID, 14K Rose, \$245. Semi-Set **86856**, 0.05 CTW, 33, \$435.

72033
Round-Shape Ring Mounting with Accents,
1- 6.0mm center, 6- 1.0mm, 7.8mm width, 14K Rose, \$439.
Semi-Set **72033**, 0.03 CTW, 33, \$565.

Available center stone shapes:



NEW

86900
Oval-Shape Pendant Mounting with Accents, 1- 8×6mm stone,
2- 1.2, 3- 1.1, 2- 1.0, 2- 0.9mm, 17.8×8.3mm, 8.9×2.7mm bail ID,
14K Yellow, \$319. Semi-Set **86900**, 0.05 CTW, 33, \$539.

72060
Oval-Shape Ring Mounting with Accents, 1- 8×6mm stone,
1- 1.6, 2- 1.5, 2- 1.4, 2- 1.3, 2- 1.2, 2- 1.1mm, 12.3mm width,
14K Yellow, \$645. Semi-Set **72060**, 1/2 CTW, 33, \$1,035.

Available stone shapes:



86740*
Pear-Shape Halo-Style Pendant Mounting,
1- 7×5mm center, 21- 1.3mm, 14×10.8mm, 4.7×2.2mm
bail ID, 14K White, \$349. Semi-Set **86740**, 1/2 CTW, 33, \$975.

72020*
Pear-Shape Halo-Style Ring Mounting with Accents,
1- 7.0mm center, 36- 1.3mm, 11.7mm width, 14K White, \$605.
Semi-Set **72020**, 1/2 CTW, 33, \$1,665.

Available center stone shapes:



NEW

86913
Round-Shape Pendant Mounting with Accents,
1- 6.0mm center, 6- 1.0, 19×6.1mm, 4.2×1.9mm slide ID,
14K Rose, \$259. Semi-Set **86913**, 0.03 CTW, 33, \$415.

72063
Round-Shape Ring Mounting with Accents,
1- 6.0mm center, 6- 1.0mm, 9.3mm width,
14K Rose, \$535. Semi-Set **72063**, 0.03 CTW, 33, \$689.

Available center stone shapes:



86801*
Cushion-Shape Pendant Mounting with Accents,
1- 5×5mm center, 2- 1.1, 2- 1.0, 2- 0.9, 2- 0.8mm,
19.2×10.1mm, 3.7×1.7mm slide ID, 14K White, \$315.
Semi-Set **86801**, 0.03 CTW, 33, \$455.

71993*
Cushion-Shape Ring Mounting with Accents,
1- 5×5mm center, 2- 1.2, 2- 1.1, 2- 1.0, 2- 0.9, 2- 0.8mm,
8.5mm width, 14K White, \$525. Semi-Set **71993**, 0.05 CTW, 33, \$715.

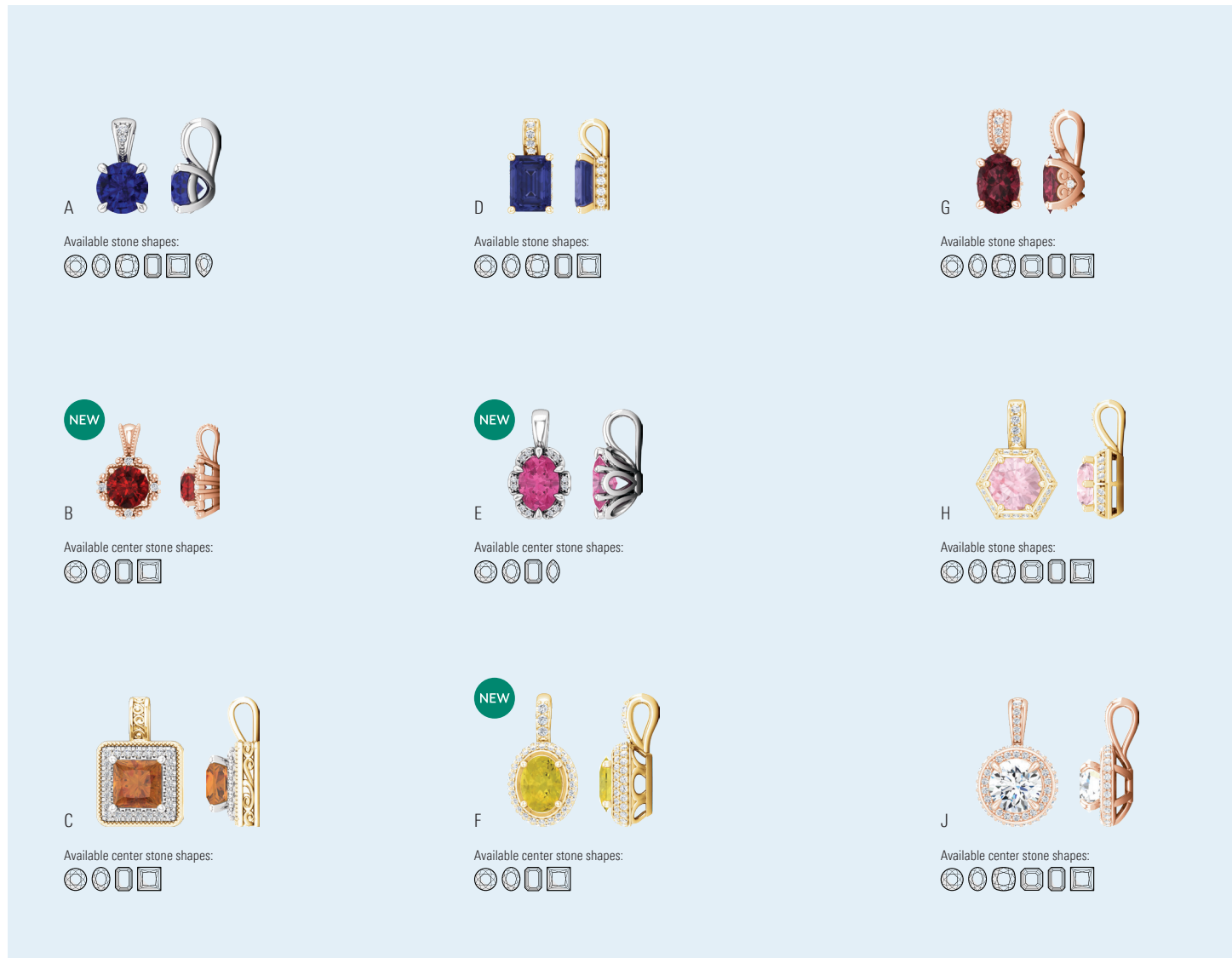
Available center stone shapes:



86504
Round-Shape Halo-Style Pendant Mounting,
1- 6.0mm center, 8- 1.1, 14.8×10mm, 4×2.2mm bail ID,
14K Rose, \$309. Semi-Set **86504**, 0.04 CTW, 33, \$475.

71899
Round-Shape Ring Mounting with Accents,
1- 6.0mm center, 14- 1.1mm, 10.1mm width,
14K Rose, \$625. Semi-Set **71899**, 0.07 CTW, 33, \$899.

Available center stone shapes:



A. 86803*
Round-Shape Pendant Mounting with Accents, 1- 6.5mm stone, 1- 1.3, 1- 0.9, 11.9x6.3mm, 5.1x2.8mm bail ID, 14K White, \$245. Semi-Set **86803**, 0.015 CTW, 33, \$309.

B. 86912
Round-Shape Pendant Mounting with Accents, 1- 6.5mm center, 4- 1.4, 14.8x10.1mm, 4.5x2mm bail ID, 14K Rose, \$299. Semi-Set **86912**, 0.05 CTW, 33, \$499.

C. 86878
Square-Shape Halo-Style Pendant Mounting, 1- 6x6mm center, 24- 1.1mm, 16.1x10.7mm, 4.5x2.1mm bail ID, 14K White, \$499. Semi-Set **86878**, 1/6 CTW, 33, \$1,049.

D. 86858
Emerald-Shape Pendant Mounting with Accents, 1- 7x5mm center, 17- 1.1mm, 16.1x10.7mm, 2.9x1.8mm bail ID, 14K Yellow, \$189. Semi-Set **86858**, 0.08 CTW, 33, \$515.

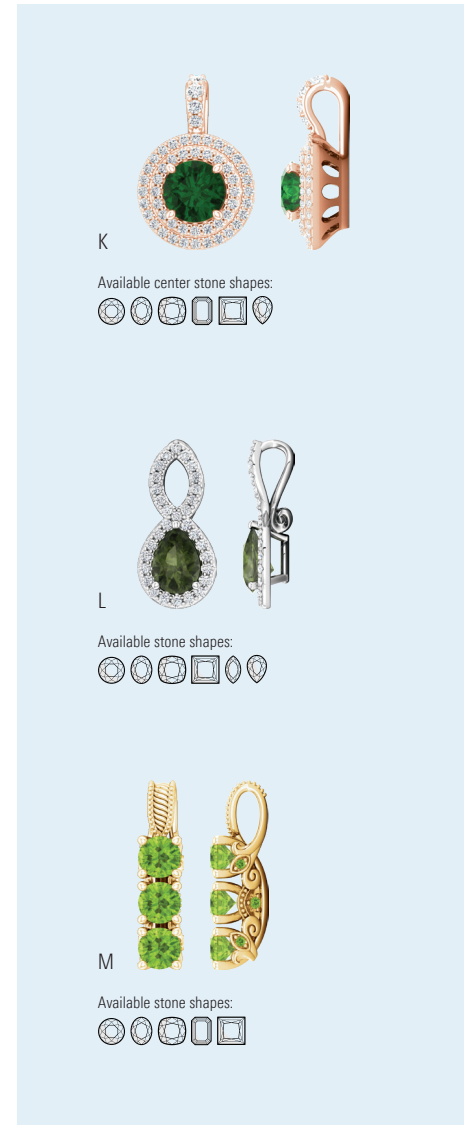
E. 86827*
Oval-Shape Halo-Style Pendant Mounting, 1- 7x5mm center, 12- 0.8mm, 13.6x7.8mm, 4.2x2.9mm bail ID, 14K White, \$305. Semi-Set **86827**, 0.03 CTW, 33, \$469.

F. 86924
Oval-Shape Halo-Style Pendant Mounting, 1- 7x5mm center, 3- 1.3, 24- 1.0, 24- 0.9mm, 16.5x8.6mm, 3.8x1.9mm bail ID, 14K Yellow, \$319. Semi-Set **86924**, 1/6 CTW, 33, \$1,155.

G. 86802
Oval-Shape Pendant Mounting with Accents, 1- 7x5mm center, 1- 1.2, 4- 1.0, 1- 0.9mm, 11.9x5.5mm, 3.9x1.9mm bail ID, 14K Rose, \$209. Semi-Set **86802**, 0.03 CTW, 33, \$385.

H. 86836
Round-Shape Pendant Mounting with Accents, 1- 6.5mm center, 4- 1.2, 18- 1.0, 14.8x10.1mm, 3.3x2mm bail ID, 14K Yellow, \$309. Semi-Set **86836**, 1/6 CTW, 33, \$755.

J. 86893
Round-Shape Halo-Style Pendant Mounting, 1- 6.5mm center, 1- 1.1, 1- 1.0, 52- 0.9, 1- 0.8mm 15.8x10.1mm, 4.6x2.1mm bail ID, 14K Rose, \$359. Semi-Set **86893**, 1/6 CTW, 33, \$1,039.



K. 86826
Round-Shape Double Halo-Style Pendant Mounting, 1- 6.5mm center, 1- 1.9, 1- 1.7, 1- 1.5, 1- 1.4, 48- 1.1, 12.3x18.5mm, 5.3x2.8mm bail ID, 14K Rose, \$475. Semi-Set **86826**, 1/6 CTW, 33, \$1,745.

L. 86857*
Pear-Shape Halo-Style Pendant Mounting, 1- 7x5mm center, 31- 1.1mm, 17.8x8.3mm, 5.1x2.6mm hidden bail ID, 14K White, \$315. Semi-Set **86857**, 1/6 CTW, 33, \$1,025.

M. 86845
Round-Shape Three-Stone Pendant Mounting, 3- 4.4mm stones, 16.5x8.6mm, 5.5x2.3mm bail ID, 14K Yellow, \$335. Semi-Set **86845**, 0.04 CTW, 33, \$3,465.

Tickled Pink

Pick and pair your perfect stone with one of our flexible 3C pendant designs.

Looking for something more specific? Call 800-877-7777, ext. 546, to inquire about special-order gemstones.



DIAMOND CLASSICS

- A. **653500**
Diamond Geometric Necklace, 0.06 CTW,
9.7×8.4mm, 14K Rose, 110, 18", \$625
- B. **86992***
Diamond Solitaire Necklace, ½ CT, 8.1×8.1mm,
14K White, 34, 16-18", \$3,415. Mounting **86992**, \$319.
- C. **653499**
Diamond Necklace, 0.05 CTW, 14.5×5mm,
14K Yellow, 110, 18", \$549
- D. **86917**
Diamond Three-Stone Necklace, 1 CTW, 16.3×4.9mm,
14K Rose, 33, 16", \$6,009. Mounting **86917**, \$425.
- E. **653535**
Diamond Circle Necklace, ½ CTW, 18×18mm,
14K White, 110, 16-18", \$1,455.



- F. **653537**
Diamond Line Bracelet, 1 CTW,
2.3mm width, 14K Yellow, 110, 7", \$4,375
- G. **653536**
Diamond Line Bracelet, 2 CTW,
2mm width, 14K White, 110, 7", \$5,585
- H. **653469**
Diamond Five-Station Bracelet,
¼ CTW, 14K Rose, 110, 5½-7", \$1,129



BRC763*
Diamond Bangle Bracelet, ¼ CTW, 2.5mm width, 14K White, 545, 8", \$1,475.
Mounting **BRC763**, \$1,089.



67337
Diamond Bangle Bracelet, 1 CTW, 1.4mm width, 14K Rose, 545, 8", \$3,055



86441
Diamond Hoop Earrings, ¼ CTW, 10.5×2.2mm, 14K Yellow,
33, \$1,175 per pair. Mounting **86441**, \$165 each.



86442*
Diamond Hoop Earrings, ½ CTW, 11.1×2.3mm, 14K White,
33, \$1,245 per pair. Mounting **86442**, \$185 each.



86685
Diamond Beaded Hoop Earrings, ¾ CTW, 12.8×2.8mm,
14K Rose, 33, \$1,325 per pair. Mounting **86685**, \$195 each.

DIAMOND CLASSICS



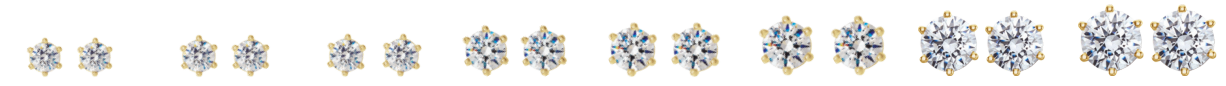
650183
Diamond Inside-Outside
Hoop Earrings,
14K Yellow

| CTW | ¼ CTW | ½ CTW | ¾ CTW | 1 CTW | 2 CTW |
|--------------------|------------------|------------------|------------------|------------------|------------------|
| mm OD | 14.5 | 19 | 23 | 26.5 | 29.5 |
| I1, H+, 545 | \$1,075 per pair | \$1,595 per pair | \$2,215 per pair | \$2,775 per pair | \$4,535 per pair |



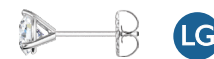
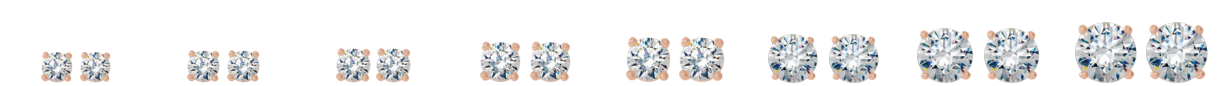
29236
Diamond Basket-Style
Stud Earrings, 14K Yellow.
Mounting **29236**.

| CTW | ⅓ CTW | ¼ CTW | ⅓ CTW | ½ CTW | ¾ CTW | ⅞ CTW | 1½ CTW | 1⅞ CTW |
|-------------------------|----------------|----------------|------------------|------------------|------------------|------------------|-------------------|-------------------|
| SI2-SI3, G-H, 32 | \$599 per pair | \$719 per pair | \$1,055 per pair | \$2,065 per pair | \$3,865 per pair | \$6,979 per pair | \$13,305 per pair | \$27,499 per pair |
| I1, G-H, 33 | \$545 per pair | \$659 per pair | \$885 per pair | \$1,639 per pair | \$2,949 per pair | \$5,389 per pair | \$10,449 per pair | \$20,865 per pair |



29762
Diamond Cocktail-Style
Stud Earrings, 14K Rose.
Mounting **29762**.

| CTW | ⅓ CTW | ¼ CTW | ⅓ CTW | ½ CTW | ¾ CTW | 1 CTW | 1½ CTW | 2 CTW |
|-------------------------|----------------|----------------|------------------|------------------|------------------|------------------|-------------------|-------------------|
| SI2-SI3, G-H, 32 | \$585 per pair | \$705 per pair | \$1,039 per pair | \$2,049 per pair | \$3,849 per pair | \$6,965 per pair | \$13,285 per pair | \$27,465 per pair |
| I1, G-H, 33 | \$529 per pair | \$649 per pair | \$869 per pair | \$1,619 per pair | \$2,939 per pair | \$5,375 per pair | \$10,429 per pair | \$20,835 per pair |



652481*
Lab-Grown Diamond
Cocktail-Style Stud Earrings,
14K White.
Mounting **652481**.

| CTW | ⅓ CTW | ½ CTW | ¾ CTW | 1 CTW | 1¼ CTW | 1½ CTW | 2 CTW |
|------------------------------|----------------|------------------|------------------|------------------|------------------|------------------|-------------------|
| VS-SI, GHI, HPHT, 618 | \$705 per pair | \$1,215 per pair | \$1,969 per pair | \$3,779 per pair | \$4,409 per pair | \$6,959 per pair | \$15,509 per pair |



Rose-Cut Revival

The rose cut dates back to the sixteenth century, making it one of the oldest cuts used today. After having been in low demand the past century, this classic cut has experienced a resurgence in popularity in the past five years thanks to celebrity proposals. Rose-cut diamonds have a completely unique look: they lack a pavilion and typically feature 24 facets, which spiral up to a single apex. Dare to be different by selecting a rose-cut diamond for your vintage-inspired design. Browse our rose-cut diamond selection at Stuller.com/RoseCutDiamonds.

| Round Rose Cut | | |
|------------------|---------|------------|
| Avg. Weight | mm Size | VS/SI2 |
| .007 - .010 | ◇ 1.4 | \$1,545 ct |
| .009 - .013 | ◇ 1.5 | \$1,545 ct |
| .011 - .016 | ◇ 1.6 | \$1,545 ct |
| .014 - .021 | ◇ 1.8 | \$1,545 ct |
| .019 - .028 | ◇ 2.0 | \$1,605 ct |
| .025 - .037 | ◇ 2.2 | \$1,605 ct |
| .034 - .050 | ◇ 2.5 | \$1,650 ct |
| .054 - .075 | ◇ 3.0 | \$1,980 ct |
| .090 - .110 | ◇ 3.5 | \$2,190 ct |
| .140 - .160 | ◇ 4.0 | \$2,640 ct |
| .190 - .220 | ◇ 4.5 | \$2,790 ct |

| Round Rose Cut | | |
|------------------|---------|-------------|
| Avg. Weight | mm Size | VS/SI2 |
| .240 - .270 | ◇ 4.8 | \$3,240 ct |
| .240 - .290 | ◇ 5.0 | \$3,540 ct |
| .320 - .380 | ◇ 5.5 | \$4,200 ct |
| .380 - .500 | ◇ 5.7 | \$4,410 ct |
| .440 - .600 | ◇ 6.0 | \$4,620 ct |
| .500 - .620 | ◇ 6.3 | \$5,280 ct |
| .540 - .700 | ◇ 6.5 | \$5,790 ct |
| .650 - .850 | ◇ 6.7 | \$5,580 ct |
| .960 - 1.05 | ◇ 7.0 | \$10,710 ct |

Classic, Meet Contemporary

Set your next solitaire ring or pair of studs with a lab-grown diamond for a contemporary twist on a classic pick. Our lab-grown diamonds are priced approximately 40% less than their natural counterparts. Be sure to shop our full loose lab-grown diamond assortment at Stuller.com/Lab-Grown-Diamonds.



652480
Lab-Grown Diamond Basket-Style Stud Earrings, 14K White. Mounting 652480.

| CTW | 1/3 CTW | 1/2 CTW | 3/4 CTW | 1 CTW | 1 1/4 CTW | 1 1/2 CTW | 2 CTW |
|------------------------------|----------------|------------------|------------------|------------------|------------------|------------------|-------------------|
| VS-SI, GHI, HPHT, 618 | \$709 per pair | \$1,219 per pair | \$1,975 per pair | \$3,785 per pair | \$4,415 per pair | \$6,959 per pair | \$15,509 per pair |



LGD140401L
Lab-Grown Diamond Light Solitaire Engagement Ring, 1 CT stone (6.5mm), 14K White, 618, size 7, \$10,649. Mounting 140401L, \$309.



LGD140309L
Lab-Grown Diamond Light Solitaire Engagement Ring, 1 CT stone (6.5mm), 14K Rose, 618, size 7, \$10,655. Mounting 140309L, \$325.



LGD150401
Lab-Grown Diamond Solitaire Engagement Ring, 1 CT stone (6.5mm), 14K White, 618, size 7, \$10,705. Mounting 150401, \$375.



LGD122089
Lab-Grown Diamond Solitaire Engagement Ring, 1 CT stone (6.5mm), 14K White, 618, size 7, \$7,695. Mounting 122089, \$545.



Blossoming Brilliance

Bridal trends are bursting forth with new growth. Choose an engagement ring, wedding band, or anniversary band as the ultimate symbol of love. Our 2019 styles will make this Valentine's Day a forget-me-not.



A. **123987** Round-Shape Halo-Style Diamond Semi-Set Engagement Ring, 1 CT center (6.5mm), accent 1/4 CTW, 14K Rose, 32, size 7, \$1,045. Mounting **123987**, \$609. | B. **123898** Diamond Eternity Band, 1 1/2 CTW, 14K White, 32, size 7, \$3,569. Mounting **123898**, \$395. | C. **LDIA-GEN:900347:G** Cushion, 1 CT, VS1, G | D. **LDIA-GEN:901004:G** Marquise, 1/2 CT, SI1, F | E. **51913** Ridged Band, 6mm width, 14K White, size 11, \$1,359 | F. **124042** Three-Stone Halo-Style Diamond Anniversary Band, 3-2.7mm centers, 3/4 CTW, 14K Rose, 32, size 7, \$1,649. Mounting **124042**, \$465. | G. **LDIA-GEN:901461:G** Oval, 1 CT, SI2, F

NEW



A

Available stone shapes:



B

3C



C

Available stone shapes:

NEW



D

Available stone shapes:



E

3C



F

Available stone shapes:

NEW



G



H

3C



J

Available stone shapes:

A. **123925*** Round-Shape Semi-Set Engagement Ring, 1 CT center (6.5mm), 1/4 CTW, 14K White, 32, size 7, \$999. Mounting **123925**, \$555. Shown with **LDIA-GEN:903043:G** Round, 1 CT, SI1, F. **123925*** Matching Diamond Band, 1/4 CTW, 14K White, 32, size 7, \$1,015. Mounting **123925**, \$489.
 B. **123723** Round-Shape Semi-Set Engagement Ring, 1 CT center (6.5mm), 1/4 CTW, 14K Rose, 32, size 7, \$1,929. Mounting **123723**, \$675. Shown with **LDIA-GEN:903074:G** Round, 1 CT, VS1, I. **123723** Matching Diamond Band, 3/4 CTW, 14K Rose, 32, size 7, \$1,525. Mounting **123723**, \$345.
 C. **123928*** Pear-Shape French-Set Halo-Style Semi-Set Engagement Ring, 9/10 CT center (8x6mm), 1/4 CTW, 14K Two-Tone, 32, size 7, \$1,385. Mounting **123928**, \$599. Shown with **LDIA-GEN:902354:G** Pear, 1 CT, SI2, G. **51950*** Matching Band, 14K White, size 7, \$439

D. **123919** Oval-Shape French-Set Semi-Set Engagement Ring, 1 CT center (8x6mm), 1/4 CTW, 14K Yellow, 32, size 7, \$2,815. Mounting **123919**, \$765. Shown with **LDIA-GEN:901462:G** Oval, 1 CT, SI2, G. **123919** French-Set Matching Diamond Band, 1/4 CTW, 14K Yellow, 32, size 7, \$1,499. Mounting **123919**, \$425.
 E. **123880*** Round-Shape Floral Semi-Set Engagement Ring, 1 CT center (6.5mm), 0.025 CTW, 14K White, 32, size 7, \$685. Mounting **123880**, \$569. Shown with **LDIA-GEN:903042:G** Round, 1 CT, SI1, E. **123880*** Matching Diamond Band, 1/10 CTW, 14K White, 32, size 7, \$719. Mounting **123880**, \$345.
 F. **123782** Cushion-Shape Halo-Style Semi-Set Engagement Ring, 2 CT center (7x7mm), 1/4 CTW, 14K Yellow, 32, size 7, \$1,419. Mounting **123782**, \$615. Shown with **LDIA-GEN:908331:G** Cushion, 1 1/4 CT, SI2, H. **123783** Matching Diamond Band, 1/4 CTW, 14K Yellow, 32, size 7, \$895. Mounting **123783**, \$395.

G. **653543*** Round-Shape Semi-Set Engagement Ring, 1 CT center (6.5mm), 1/4 CTW, 14K White, 603, size 6, \$2,469. Shown with **LDIA-GEN:903088:G** Round, 1 CT, VS2, K. **653543** Matching Diamond Band, 1/4 CTW, 14K White, 603, size 6, \$2,339
 H. **123876*** Round-Shape Semi-Set Engagement Ring, 1 CT center (6.5mm), 1/4 CTW, 14K Rose, 32, size 7, \$969. Mounting **123876**, \$599. Shown with **LDIA-GEN:903099:G** Round, 1 CT, VVS2, F. **123876** Matching Diamond Band, 1/4 CTW, 14K Rose, 32, size 7, \$1,219. Mounting **123876**, \$545.
 J. **123785*** Round-Shape Semi-Set Engagement Ring, 1 CT center (6.5mm), 3/4 CTW, 14K White, 26, 32, size 7, \$2,059. Mounting **123785**, \$515. Shown with **LDIA-GEN:903084:G** Round, 1 CT, VS2, H. **123786*** Matching Diamond Band, 1/4 CTW, 14K White, 32, size 7, \$1,375. Mounting **123786**, \$425.

*Indicates item is rhodium plated.

ACCENTED ENGAGEMENT RINGS



Available stone shapes:



Available stone shapes:



Available stone shapes:



Available stone shapes:



Available stone shapes:



Available stone shapes:



Available stone shapes:



Available stone shapes:



Available stone shapes:



Available stone shapes:



A. 123765*
 Cushion-Shape Diamond Semi-Set Engagement Ring, 1 1/4 CT center (6x6mm), 1/2 CTW, 14K Two-Tone, 32, size 7, \$1,085. Mounting **123765**, \$685.
 Shown with **LDIA-GEN:906560-G** Cushion, 2 CT, VS2, I.
123766*
 Matching Diamond Band, 1/2 CTW, 14K White, 32, size 7, \$1,029. Mounting **123766**, \$549.

B. 123922*
 Oval-Shape Semi-Set Engagement Ring, 1 CT center (8x6mm), 1/2 CTW, 14K White, 32, size 7, \$2,595. Mounting **123922**, \$705.
 Shown with **LDIA-GEN:901461-G** Oval, 1 CT, SI2, F.
123041*
 Matching Diamond Band, 1/4 CTW, 14K White, 32, size 7, \$1,335. Mounting **123041**, \$315.

C. 123951
 Round-Shape Three-Stone French-Set Semi-Set Engagement Ring, 1 CT center (6.5mm), 3/4 CTW, 14K Rose, 32, size 7, \$1,925. Mounting **123951**, \$569.
 Shown with **LDIA-GEN:903071-G** Round, 1 CT, VS1, F.
123951
 French-Set Matching Diamond Band, 1/4 CTW, 14K Rose, 32, size 7, \$1,469. Mounting **123951**, \$459.

D. 123972*
 Round-Shape French-Set Semi-Set Engagement Ring, 1 1/4 CT center (7.0mm), 1/2 CTW, 14K White, 32, size 7, \$1,389. Mounting **123972**, \$689.
 Shown with **LDIA-GEN:903152-G** Round, 1 1/4 CT, VS1, F.
123972*
 French-Set Matching Diamond Band, 1/2 CTW, 14K White, 32, size 7, \$1,539. Mounting **123972**, \$359.

E. 123730
 Pear-Shape Semi-Set Engagement Ring, 1 1/2 CT center (9x6mm), 1/2 CTW, 14K Rose, 32, size 7, \$1,339. Mounting **123730**, \$695.
 Shown with **LDIA-GEN:902367-G** Pear, 1 CT, VS2, G.
123730
 Matching Diamond Band, 1/4 CTW, 14K Rose, 32, size 7, \$1,225. Mounting **123730**, \$409.

F. 123842*
 Round-Shape Semi-Set Engagement Ring, 1 CT center (6.5mm), 1/2 CTW, 14K White, 21, 32, size 7, \$919. Mounting **123842**, \$565.
 Shown with **LDIA-GEN:903042-G** Round, 1 CT, SI1, E.
123842*
 Matching Diamond Band, 1/2 CTW, 14K White, 32, size 7, \$929. Mounting **123842**, \$419.

G. 123773
 Round-Shape Semi-Set Engagement Ring, 1 CT center (6.5mm), 1/2 CTW, 14K Rose, 32, size 7, \$1,229. Mounting **123773**, \$695.
 Shown with **LDIA-GEN:903055-G** Round, 1 CT, SI2, E.
123773
 Matching Diamond Band, 1/2 CTW, 14K Rose, 32, size 7, \$985. Mounting **123773**, \$309.

H. 123978*
 Round-Shape Halo-Style French-Set Semi-Set Engagement Ring, 1 CT center (6.5mm), 1/2 CTW, 14K White, 32, size 7, \$1,269. Mounting **123978**, \$539.
 Shown with **LDIA-GEN:903062-G** Round, 1 CT, SI2, J.
123011*
 Matching Diamond Band, 0.07 CTW, 14K White, 32, size 7, \$589. Mounting **123011**, \$349.

J. 123910*
 Round-Shape French-Set Halo-Style Semi-Set Engagement Ring, 1 CT center (6.5mm), 3/4 CTW, 14K White, 32, size 7, \$4,399. Mounting **123910**, \$755.
 Shown with **LDIA-GEN:903056-G** Round, 1 CT, SI2, F.
123910*
 French-Set Matching Diamond Band, 1/4 CTW, 14K White, 32, size 7, \$1,675. Mounting **123910**, \$355.

K. 123967
 Round-Shape Halo-Style Semi-Set Engagement Ring, 1 CT center (6.5mm), 1/2 CTW, 14K Yellow, 32, size 7, \$1,779. Mounting **123967**, \$809.
 Shown with **LDIA-GEN:903080-G** Round, 1 CT, VS2, D.
123967
 Matching Diamond Band, 1/2 CTW, 14K Yellow, 32, size 7, \$1,025. Mounting **123967**, \$595.

L. 123923*
 Round-Shape Halo-Style Semi-Set Engagement Ring, 1 CT center (6.5mm), 1/4 CTW, 14K White, 32, 21, 23, size 7, \$1,345. Mounting **123923**, \$665. |
 Shown with **LDIA-GEN:903054-G** Round, 1 CT, SI2, D.
123923*
 Matching Diamond Band, 0.04 CTW, 14K White, 32, size 7, \$655. Mounting **123923**, \$519.

M. 123767
 Marquise-Shape Halo-Style Semi-Set Engagement Ring, 3/4 CT center (10x5mm), 1/2 CTW, 14K Yellow, 23, 32, size 7, \$1,235. Mounting **123767**, \$565.
 Shown with **LDIA-GEN:901110-G** Marquise, 1 CT, SI1, H.
123767
 Matching Diamond Band, 0.07 CTW, 14K Yellow, 32, size 7, \$689. Mounting **123767**, \$449.

N. 123774
 Round-Shape Halo-Style Semi-Set Engagement Ring, 1 CT center (6.5mm), 3/4 CTW, 14K Rose, 26, 32, 117, size 7, \$2,469. Mounting **123774**, \$529.
 Shown with **LDIA-GEN:903084-G** Round, 1 CT, VS2, H.
123774
 Matching Diamond Band, 1/2 CTW, 14K Rose, 32, size 7, \$905. Mounting **123774**, \$365.

P. 123913*
 Round-Shape Halo-Style Semi-Set Engagement Ring, 1 CT center (6.5mm), 1/2 CTW, 14K White, 21, 32, size 7, \$2,219. Mounting **123913**, \$649.
 Shown with **LDIA-GEN:903099-G** Round, 1 CT, VVS2, F.
123913*
 Matching Diamond Band, 1/4 CTW, 14K White, 32, size 7, \$1,255. Mounting **123913**, \$475.

Q. 123909*
 Oval-Shape French-Set Halo-Style Semi-Set Engagement Ring, 1 CT center (8x6mm), 3/4 CTW, 14K White, 26, 29, 32, size 7, \$2,919. Mounting **123909**, \$529.
 Shown with **LDIA-GEN:901452-G** Oval, 1 CT, SI1, F.
123909*
 French-Set Matching Diamond Band, 1/2 CTW, 14K White, 32, size 7, \$1,709. Mounting **123909**, \$385.

R. 123781
 Round-Shape Halo-Style Semi-Set Engagement Ring, 1 CT center (6.5mm), 1/2 CTW, 14K Yellow, 32, size 7, \$1,785. Mounting **123781**, \$765.
 Shown with **LDIA-GEN:903057-G** Round, 1 CT, SI2, G.
123781
 Matching Diamond Band, 1/2 CTW, 14K Yellow, 32, size 7, \$785. Mounting **123781**, \$489.

S. 123907*
 Round-Shape Halo-Style Semi-Set Engagement Ring, 1 CT center (6.5mm), 1/2 CTW, 14K White, 21, 32, size 7, \$1,805. Mounting **123907**, \$869.
 Shown with **LDIA-GEN:903082-G** Round, 1 CT, VS2, F.
123907*
 Matching Band, 14K White, size 7, \$539

T. 123770
 Marquise-Shape Halo-Style Semi-Set Engagement Ring, 3/4 CT center (10x5mm), 5/8 CTW, 14K Yellow, 26, 32, size 7, \$2,469. Mounting **123770**, \$575.
 Shown with **LDIA-GEN:901118-G** Marquise, 1 CT, SI2, G.
123770
 Matching Diamond Band, 3/8 CTW, 14K Yellow, 32, size 7, \$1,509. Mounting **123770**, \$415.

HALO-STYLE ENGAGEMENT RINGS

ENGAGEMENT RINGS

SETTINGS & SHANKS



A



D



G

Available stone shapes:



B



E



H

Available center stone shapes:



C

Available stone shapes:



F



J

A. 123981*
 Round-Shape Sculptural Semi-Set Engagement Ring,
 1 1/4 CT center (7.0mm), 0.025 CTW,
 14K White, 32, size 7, \$655. Mounting **123981**, \$545.
 Shown with **LDIA-GEN-903144-G** Round, 1 1/4 CT, SI2, G.
123981*
 Matching Band, 14K White, size 7, \$429

B. 123982*
 Round-Shape Semi-Set Engagement Ring,
 1 CT center (6.5mm), 0.05 CTW, 14K White, 32,
 size 7, \$785. Mounting **123982**, \$559.
 Shown with **LDIA-GEN-903060-G** Round, 1 CT, SI2, I.
123982*
 Matching Diamond Band, 0.03 CTW,
 14K White, 32, size 7, \$599. Mounting **123982**, \$439.

C. 123738
 Oval-Shape Semi-Set Engagement Ring,
 1 CT center (8x6mm), 0.03 CTW, 14K Rose, 32, size 7, \$695.
 Mounting **123738**, \$579. Shown with **LDIA-GEN-901462-G** Oval, 1 CT, SI2, G.
123738
 Matching Diamond Band, 0.08 CTW,
 14K Rose, 32, size 7, \$719. Mounting **123738**, \$449.

D. 123796
 Round-Shape Sculptural Engagement Ring Mounting,
 1 CT stone (6.5mm), 14K Yellow, size 7, \$569.
 Shown with **LDIA-GEN-903070-G** Round, 1 CT, VS1, E.
123796
 Matching Band, 14K Yellow, size 7, \$445

E. 123815
 Round-Shape Sculptural Semi-Set Engagement Ring,
 1 CT center (6.5mm), 0.03 CTW,
 14K Rose, 32, size 7, \$895. Mounting **123815**, \$765.
 Shown with **LDIA-GEN-903005-G** Round, 1 CT, I1, G.
123815
 Matching Diamond Band, 0.05 CTW,
 14K Rose, 32, size 7, \$865. Mounting **123815**, \$679.

F. 123488
 Round-Shape Semi-Set Engagement Ring,
 1 CT center (6.5mm), 0.05 CTW, 14K Yellow, 32,
 size 7, \$949. Mounting **123488**, \$639.
 Shown with **LDIA-GEN-903057-G** Round, 1 CT, SI2, G.
123488
 Matching Band, 14K Yellow, size 7, \$469

G. 123739*
 Oval-Shape Sculptural Engagement Ring Mounting,
 1 CT stone (8x6mm), 14K White, size 7, \$489
 Shown with **LDIA-GEN-901467-G** Oval, 1 CT, VS1, E.
123739*
 Matching Band, 14K White, size 7, \$405

H. 123511*
 Round-Shape Semi-Set Engagement Ring,
 1 CT center (6.5mm), 0.03 CTW, 14K White, 32,
 size 7, \$745. Mounting **123511**, \$575.
 Shown with **LDIA-GEN-903041-G** Round, 1 CT, SI1, D.
123511*
 Matching Diamond Band, 0.01 CTW, 14K White, 32,
 size 7, \$489. Mounting **123511**, \$435.

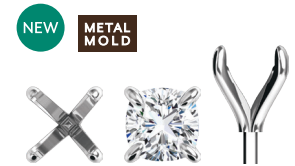
J. 123980
 Round-Shape Sculptural Semi-Set Engagement
 Ring, 1 CT center (6.5mm), 0.07 CTW, 14K Rose,
 32, size 7, \$835. Mounting **123980**, \$619.
 Shown with **LDIA-GEN-903044-G** Round, 1 CT, SI1, G.
123980
 Matching Diamond Band, 0.02 CTW,
 14K Rose, 32, size 7, \$515. Mounting **123980**, \$439.



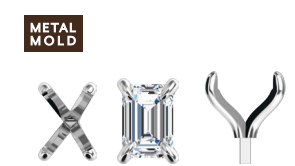
2000086
 Cushion-Shape Halo-Style Semi-Set
 4-Prong Peg Setting, 1 1/4 CT center
 (6x6mm), 3/4 CTW, 9mm height,
 14K Rose, 33, \$2,099. Mounting **2000086**, \$185.



29815
 Round-Shape Halo-Style French-Set
 Semi-Set 4-Prong Peg Setting, 1 CT center
 (6.5mm), 1/2 CTW, 10.8mm height,
 14K White, 33, \$615. Mounting **29815**, \$119.



2000032
 Cushion-Shape Claw-Prong Peg Setting,
 1 1/4 CT stone (6x6mm), 9.9mm height,
 14K White, \$79



29883
 Emerald-Shape Claw-Prong Peg Setting,
 1 1/4 CT stone (7x5mm), 6mm height,
 14K White, \$49



SH758
 Cathedral Peg Shank, 5.4mm span,
 2.1x3.7 shoulder, 14K White, \$335



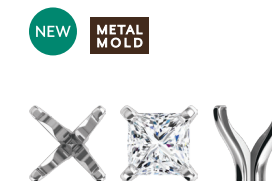
SH756
 Diamond French-Set Peg Shank, 3/4 CTW,
 1mm span, 14K Rose, 33, \$2,235.
 Mounting **SH756**, \$499.



SH769
 Peg Shank with Heart-Shape Side Stones,
 1/2 CTW, 1mm span, 2.3x2.6mm shoulder,
 14K Yellow, \$349.
 Mounting **SH769**, \$2,369.



SH768
 Peg Shank with Square Diamond Side
 Stones, 1/2 CTW, 2.8mm span, 2.7x2.7mm
 shoulder, 14K White,
 34, \$1,299. Mounting **SH768**, \$445.



2000195
 Square-Shape Shank Setting,
 1 CT stone (5.5x5.5mm),
 7.2mm height, 14K White, \$85



2000081
 Round-Shape 4-Prong Shank Setting,
 1 1/2-1 1/2 CT (6.6-7.2mm) stone range,
 8.3mm height, 14K White, \$85



2000142
 Emerald-Shape Halo-Style Semi-Set
 4-Prong Shank Setting, 1 1/4 CT center
 (7x5mm), 1/10 CTW, 7.6mm height,
 14K White, 33, \$465. Mounting **2000142**, \$115.



2000140
 Pear-Shape Halo-Style Semi-Set 4-Prong
 Shank Setting, 3/10 CT center (8x5mm),
 1/10 CTW, 8mm height, 14K White, 33, \$469.
 Mounting **2000140**, \$119.



SH761*
 Diamond Open Shank for 4-Prong
 Setting, 3/8 CTW, 3x1.9mm shoulder,
 14K White, 33, \$1,249.
 Mounting **SH761**, \$255.



SH774
 Floral Open Shank for 4-Prong Setting,
 2.1x2.3mm shoulder, 14K Yellow, \$315



SH767*
 Diamond Sculptural Open Shank,
 0.06 CTW, 2.4mm span,
 5.1x2.4mm shoulder, 14K White, 33, \$545.
 Mounting **SH767**, \$335.



SH765
 Sculptural Open Shank, 3.46mm span,
 4.4x2mm shoulder, 14K Yellow, \$335



A



E



J



N



S



W



B



F



K



P



T



X



C



G



L



Q



U



Y



D



H



M



R



V



Z



A. **123847***
Diamond Contour Band, 1/10 CTW, 32, size 7, 14K White, \$735. Mounting **123847**, \$419.

B. **123499**
Diamond Contour Band, 1/10 CTW, 32, size 7, 14K Rose, \$639. Mounting **123499**, \$375.

C. **123666***
Diamond Contour Band, 1/3 CTW, 21, 35, size 7, 14K White, \$1,599. Mounting **123666**, \$525.

D. **123872**
Diamond Contour Band, 1/4 CTW, 32, size 7, 14K Yellow, \$1,255. Mounting **123872**, \$439.

E. **123760**
Diamond Contour Band, 1/10 CTW, 32, size 7, 14K Yellow, \$859. Mounting **123760**, \$419.

F. **123942***
Diamond Contour Band, 1/5 CTW, 26, 32, size 7, 14K White, \$859. Mounting **123942**, \$385.

G. **123848**
Diamond Contour Band, 0.025 CTW, 32, size 7, 14K Yellow, \$505. Mounting **123848**, \$385.

H. **123941**
Diamond Contour Band, 1/10 CTW, 32, 117, size 7, 14K Rose, \$1,219. Mounting **123941**, \$445.

J. **123866**
Diamond Contour Band, 1/6 CTW, 32, size 7, 14K Rose, \$889. Mounting **123866**, \$369.

K. **123759***
Diamond Contour Band, 0.01 CTW, 26, 32, size 7, 14K White, \$649. Mounting **123759**, \$389.

L. **123543**
Diamond Contour Band, 1/5 CTW, 23, 21, 32, size 7, 14K Rose, \$1,095. Mounting **123543**, \$369.

M. **123762***
Diamond Contour Band, 1/6 CTW, 26, 32, size 7, 14K White, \$1,009. Mounting **123762**, \$419.

N. **124012**
Diamond Anniversary Band, 3/8 CTW, 14K Rose, 32, size 7, \$1,679. Mounting **124012**, \$609.

P. **123947**
Diamond Anniversary Band, 1/2 CTW, 14K Yellow, 32, size 7, \$1,559. Mounting **123947**, \$369.

Q. **123957***
Diamond Anniversary Band, 1/5 CTW, 14K White, 32, size 7, \$999. Mounting **123957**, \$475.

R. **123643**
Round-Shape Diamond Eternity Band, 2.0mm stones (3/10 CTW), 14K Yellow, 32, size 7, \$2,519. Mounting **123643**, \$369.

S. **123955***
Diamond Anniversary Band, 1 1/2 CTW, 14K White, 21, size 7, \$3,335. Mounting **123955**, \$549.

T. **123949**
Diamond Anniversary Band, 1/10 CTW, 14K Rose, 32, size 7, \$899. Mounting **123949**, \$459.

U. **123956**
Diamond Anniversary Band, 1/5 CTW, 14K Rose, 32, size 7, \$1,239. Mounting **123956**, \$429.

V. **123777***
Diamond Eternity Band, 3/4 CTW, 14K White, 32, size 7, \$3,245. Mounting **123777**, \$435.

W. **653559**
Diamond Anniversary Band, 3/4 CTW, 14K Rose, 32, size 7, \$2,625

X. **123868***
Diamond Anniversary Band, 1/6 CTW, 14K White, 32, size 7, \$929. Mounting **123868**, \$495.

Y. **123865**
Diamond Anniversary Band, 1/3 CTW, 14K Yellow, 26, size 7, \$1,245. Mounting **123865**, \$365.

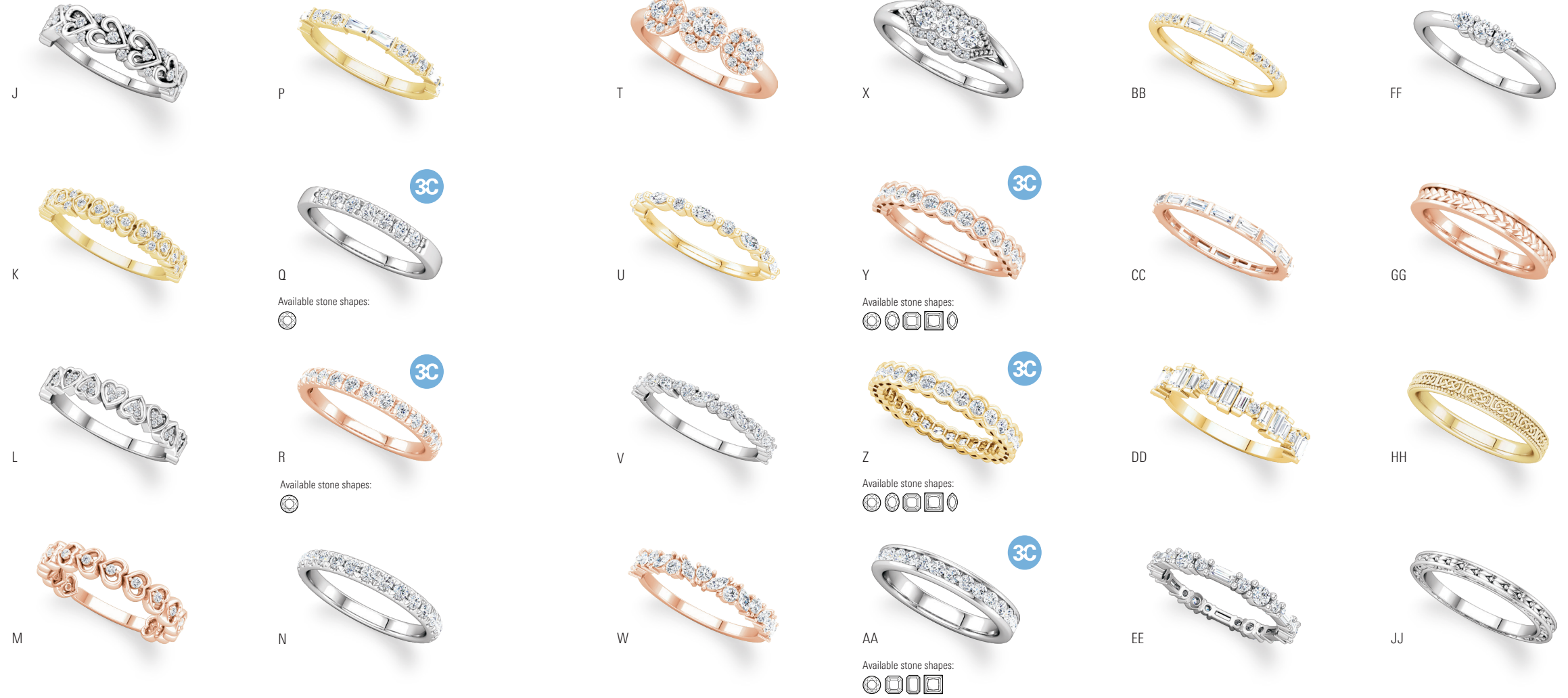
Z. **123813**
Diamond Eternity Band, 1/2 CTW, 14K Yellow, 32, size 7, \$1,899. Mounting **123813**, \$629.

Dainty and Delightful

Refresh her impeccable style with one or more of the trendiest stackable styles.



STACKABLE BANDS



J. 123855*
Diamond Anniversary Band,
1/6 CTW, 14K Yellow, 32, size 7,
\$1,155. Mounting **123855**, \$645

K. 123854
Diamond Anniversary Band,
1/6 CTW, 14K Yellow, 32,
size 7, \$1,519. Mounting **123854**, \$475.

L. 123856*
Diamond Anniversary Band,
0.08 CTW, 14K White, 32,
size 7, \$915. Mounting **123856**, \$519.

M. 123422
Diamond Anniversary Band,
1/6 CTW, 14K Rose, 32, size 7, \$925.
Mounting **123422**, \$449.

P. 123608
Diamond French-Set Anniversary Band,
3/8 CTW, 14K Yellow, 23, 32,
size 7, \$1,879. Mounting **123608**, \$369.

Q. 123881*
Diamond French-Set Anniversary Band,
1/6 CTW, 14K White, 32, size 7, \$1,029.
Mounting **123881**, \$455.

R. 123883
Diamond French-Set Anniversary Band,
1/2 CTW, 14K Rose, 32, size 7, \$1,649.
Mounting **123883**, \$409.

N. 123570*
Diamond French-Set Anniversary Band,
3/8 CTW, 14K White, 32, size 7, \$2,169.
Mounting **123570**, \$449.

T. 124025
Halo-Style Diamond Anniversary Band,
3/8 CTW, 14K Rose, 32, size 7, \$1,849.
Mounting **124025** \$555.

U. 123502
Diamond Anniversary Band,
3/8 CTW, 14K Yellow, 26, 32, size 7,
\$1,295. Mounting **123502**, \$315.

V. 123858*
Diamond Anniversary Band,
3/8 CTW, 14K White, 26, 32, size 7,
\$1,489. Mounting **123858**, \$375.

W. 123609
Diamond Anniversary Band,
1/2 CTW, 14K Rose, 26, 32, size 7, \$1,859.
Mounting **123609**, \$329.

X. 124026*
Diamond Semi-Set Anniversary Band,
0.05 CTW, 14K White, 32, size 7, \$709.
Mounting **124026** \$489.

Y. 123596
Diamond Anniversary Band,
1/2 CTW, 32, size 7, 14K Rose, \$1,529.
Mounting **123596**, \$435.

Z. 123597
Diamond Eternity Band,
7/8 CTW, 32, size 7, 14K Yellow, \$2,515.
Mounting **123597**, \$415.

AA. 122981*
Diamond Anniversary Band, 1/2 CTW,
32, size 7, 14K White, \$1,765.
Mounting **122981**, \$595.

BB. 123993
Three-Stone Diamond Anniversary
Band, 1/6 CTW, 14K Yellow,
21, 32, size 7, \$929. Mounting **123993** \$319.

CC. 123498
Diamond Eternity Band, 3/4 CTW,
14K Rose, 21, size 7, \$2,309.
Mounting **123498**, \$265.

DD. 123945
Diamond Anniversary Band,
3/4 CTW, 14K Yellow, 21, 32, size 7,
\$2,505. Mounting **123945**, \$399.

EE. 123550*
Diamond Eternity Band, 9/16 CTW,
14K White, 21, 32, size 7, \$2,709.
Mounting **123550**, \$389.

FF. 124005*
Three-Stone Diamond Anniversary
Band, 1/6 CTW, 14K White, 32,
size 7, \$815. Mounting **124005** \$389.

GG. 51872
Woven-Design Band, 3mm width,
14K Rose, size 7, \$735

HH. 51857
Celtic-Inspired Band with Milgrain,
3mm width, 14K Yellow, size 7, \$445

JJ. 51881*
Sculptural Leaf Design Band,
2mm width, 14K White,
size 7, \$385

A. 123864 Diamond Anniversary Band, 1/2 CTW, 14K Rose, 32, size 7, \$1,525. Mounting **123864**, \$469.
B. 123948 Five-Stone Diamond Anniversary Band, 0.08 CTW, 14K Yellow, 32, size 7, \$719.
Mounting **123948**, \$425. | **C. FUL7** Flat Ultra-Light Band, 2mm width, 14K Rose, size 7, \$239
D. 123572 Diamond Anniversary Band, 3/8 CTW, 14K White, 23, 32, size 7, \$1,989. Mounting **123572**, \$359.

E. 123940 Diamond Anniversary Band, 9/16 CTW, 14K Rose, 36, 32, size 7, \$3,369. Mounting **123940**, \$579. | **F. 123863** Diamond Anniversary Band, 1/2 CTW, 14K White, 32, size 7, \$1,565. Mounting **123863**, \$469.
G. 123874 Diamond Anniversary Band, 3/8 CTW, 14K Rose, 32, size 7, \$1,435. Mounting **123874**, \$459. | **H. 51970** Sculptural Band with Milgrain, 5mm width, 14K Yellow, size 7, \$875

*Indicates item is rhodium plated.

Love Everlasting

From simple to showy, our wedding band selection bursts with choices.

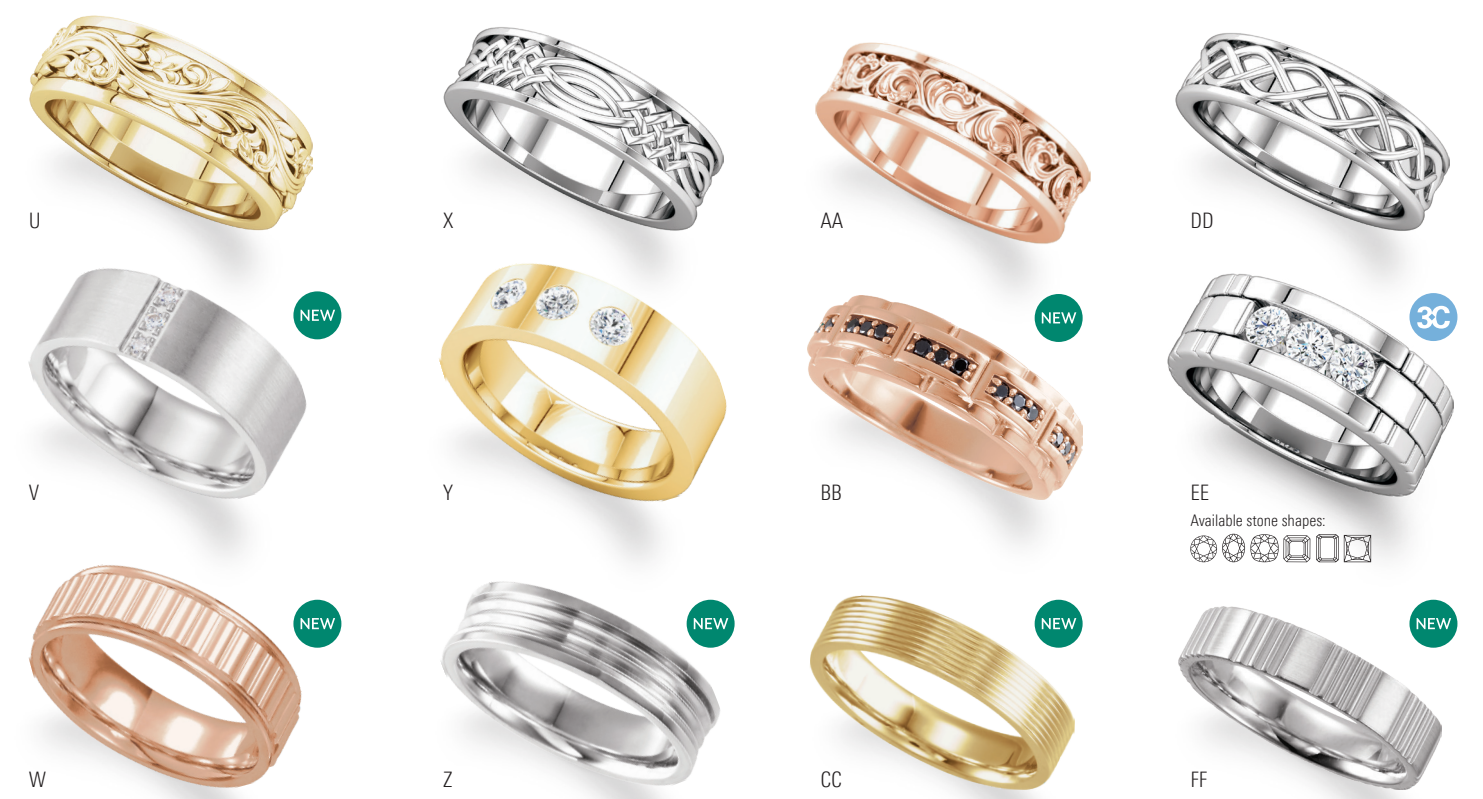


A. **51981** Beveled-Edge Comfort-Fit Band with Satin Finish, 6mm width, 18K Rose/Palladium, size 10, \$2,119 | B. **CC10** Comfort-Fit Concave Band, 7mm width, 14K Yellow, size 10, \$999
C. **51937** Patterned Band, 6mm width, 14K Yellow, size 10, \$1,275 | D. **FIR10** Flat Comfort-Fit Band, 6mm width, 14K White, size 10, \$1,069

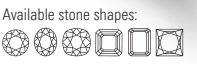
E. **51929** Patterned Band, 5mm width, 14K White, size 10, \$985 | F. **123879** Bezel-Set Diamond Band, 5mm width, 14K Rose, size 10, \$1,215. Mounting **123879**, \$1,185.



G. **MGRF10*** Flat Comfort-Fit Band with Milgrain, 6mm width, 14K White, size 10, \$965
H. **51981** Beveled-Edge Comfort-Fit Band with Satin Finish, 6mm width, 14K Two-Tone, size 10, \$1,369
J. **51915*** Rope Patterned Band, 6mm width, 14K White, size 10, \$1,695
K. **MGR10** Comfort-Fit Band with Milgrain, 6mm width, 14K Yellow, size 10, \$1,059
L. **51982** Comfort-Fit Patterned Band, 6mm width, 14K White, size 10, \$1,209
M. **51985** Comfort-Fit Patterned Band, 6mm width, 14K Rose, size 10, \$1,299
N. **FE10** Flat-Edge Band, 7mm width, 14K Rose, size 10, \$815
P. **51948** Patterned Band, 6mm width, 14K Yellow, size 10, \$1,169
Q. **RPR10** Half-Round Comfort-Fit Band with Rope Pattern, 5mm width, 14K White, size 10, \$785
R. **HRE10*** Half-Round Edge Band, 6mm width, 14K White, size 10, \$785
S. **653076** Flat Band with Brushed Finish, 6mm width, 14K Two-Tone, size 10, \$1,445
T. **653540** Black Diamond Band, ¼ CTW, 14K Rose, 601, size 10, \$3,729



U. **51777** Sculptural Wedding Band, 7.2mm width, 14K Yellow, size 10, \$1,655
V. **123860*** Diamond Band with Satin Finish, ¼ CTW, 8.1mm width, 14K White, 32, size 10, \$2,095. Mounting **123860**, \$1,829
W. **51927** Ridged Band, 6mm width, 14K Rose, size 10, \$1,079
X. **51838*** Celtic-Inspired Band, 6mm width, 14K White, size 10, \$1,085
Y. **123727** Flat Comfort-Fit Three-Stone Diamond Band, ½ CTW, 6mm width, 14K Yellow, 32, size 10, \$2,599. Mounting **123727**, \$1,759.
Z. **51944*** Comfort-Fit Grooved Band, 6mm width, 14K White, size 10, \$1,129
AA. **51861** Sculptural Band, 6mm width, 14K Rose, size 10, \$1,155
BB. **9860** Black Diamond Patterned Band, ¼ CTW, 6.6mm width, 14K Rose, 184, size 10, \$1,609. Mounting **9860**, \$1,275.
CC. **51942** Comfort-Fit Grooved Band, 6mm width, 14K Yellow, size 10, \$1,269
DD. **51846*** Woven-Design Band, 6mm width, 14K White, size 10, \$1,105
EE. **123522*** Round-Shape Channel-Set Diamond Wedding Band, ¾ CTW, 7.9mm width, 14K White, 32, size 11, \$4,809. Mounting **123522**, \$2,795.
FF. **51966*** Grooved Band, 5mm width, 14K White, size 10, \$1,059



Bouquets on Display

Keep your store blooming through all seasons with new packaging and display options.



A. **61-3073** Small Ivory Brushed Paper Tote with Ribbon Handle (Pack of 100), \$95 | B. **61-0594** Mulberry (480 pack) Tissue Paper, 20"x30", \$45.95 | C. **61-9062** Lacquered April Diamond Colored Rose with Gold Trim, \$99 | D. **61-9147** Lacquered Pink Rose with Gold Trim, \$99 | E. **61-9063** Lacquered Opal Colored Rose with Gold Trim, \$99 | F. **61-4540** Champagne Leatherette Pouch, 8 1/4"x7", \$9.20 | G. **61-0800** Aura Collection Petal Earring/Pendant Box, 2 1/2"x2 1/4"x1 1/2", \$5.60 | H. **61-0007** Eva Collection Lavender Single Ring Box, 2 1/4"x2 1/4"x2", \$8.95 | J. **61-0007** Eva Collection Ivory Pendant Box, 2 1/2"x2 1/2"x1 1/8", \$10.05 | K. **61-0041** Large Pink Rose Ring Box, \$6 | L. **61-0041** Small Pink Rose Ring Box, \$4 | M. **61-0011** Starlight Champagne Collection Bracelet/Watch Box with Pillow, 3 3/4"x3 3/4"x2 1/4", \$9.30 | N. **61-4541** Blush Leatherette Jewelry Roll, 6 1/8"x9 5/8", \$10.35

Roses are priced at suggested retail.

Springtime Shine

Offer Klean Karats Jewelry Cleaner as a complimentary add-on for any jewelry purchase.



P. **17-0882** Klean Karats® Gentle Jewelry Cleaner, 6 oz. (pack of 12), \$32.95 | Q. **17-0883** Klean Karats® Silver Jewelry Cleaner, 6 oz. (pack of 12), \$32.95 | R. **17-0881** Klean Karats® Fine Jewelry Cleaner, 6 oz. (pack of 12), \$32.95 | S. **17-0885** Klean Karats® Foaming Jewelry Cleaner (5oz. bottle, pack of 15), \$90 | T. **17-0790** Klean Karats® Treated Cloth with Envelope, 4"x4", \$1.45 | U. **54-4097** Klean Karats® Ring Remover (1 oz bottles, pack of 12), \$34.95 | V. **17-0884** Klean Karats® Natural Jewelry Cleaner, 6 oz. (pack of 12) \$32.95 | W. **61-9142** Lacquered Orange Rose with Gold Trim, \$99 | X. **61-9146** Lacquered Cream Pink Rose with Gold Trim, \$99 | Y. **61-9060** Lacquered Pink Pearl Rose with Gold Trim, \$99



STONE CODES

| | | | | | |
|--|-----|---|---|--|------|
| 4 Chatham Laboratory Created Emerald | SYN | 55 Genuine Faceted London Blue Topaz, AA | R | 413 Genuine Cab Turquoise - Blue | N |
| 6 Chatham Laboratory Created Ruby | SYN | 57 Genuine Genuine Mozambique Garnet, AA | N | 445 Genuine Faceted Citrine | H |
| 7 Chatham Laboratory Created Sapphire | SYN | 59 Genuine Faceted Onyx | D | 457 Synthetic Faceted Ruby | SYN |
| 16 Cultured Pearl - White, AA | E | 60 Genuine Cab Opal, A | N | 505 Flower-Cut Light Green CZ | IMIT |
| 20 Genuine Straight Baguette Diamond, VS, G-I | N | 61 Genuine Faceted Peridot, AA | N | 513 Genuine Faceted White Sapphire, AA | H |
| 21 Genuine Straight Baguette Diamond, SI2-SI3, G-I | N | 64 Genuine Cab Rhodolite Garnet, AA | N | 521 Lab-Grown Cab Opal - White | SYN |
| 22 Genuine Tapered Baguette Diamond, VS, G-I | N | 66 Genuine Faceted Ruby, AA | H | 528 Akoya Cultured Pearl, AA | E |
| 23 Genuine Tapered Baguette Diamond, SI2-SI3, G-I | N | 67 Genuine Faceted Blue Sapphire, AA | H | 544 Genuine Round Diamond, SI, H+ | N |
| 25 Genuine Marquise Diamond, SI1, G-I | N | 70 Genuine Faceted Pink Sapphire, AA | H | 545 Genuine Round Diamond, I1, H+ | N |
| 26 Genuine Marquise Diamond, SI2-SI3, G-I | N | 83 Genuine Faceted Pink Tourmaline, AA | H | 591 Genuine Faceted Alexandrite | N |
| 29 Genuine Pear Diamond, SI1, G-I | N | 109 Genuine Round Diamond, SI, G-I | N | 602 Genuine Triangle Diamond, SI2-SI3, G-I | N |
| 32 Genuine Round Diamond, SI2-SI3, G-H | N | 110 Genuine Round Diamond, I1, G-I | N | 618 Lab-Grown Diamond, SI, G-I | HPHT |
| 33 Genuine Round Diamond, I1, G-I | N | 117 Genuine Pear Diamond, SI2-SI3, G-I | N | 619 Genuine Round Diamond, I1-I2, H-I | N |
| 35 Genuine Square Diamond, SI2-SI3, G-H | N | 119 Genuine Cab Coral - Peach | N | 81 Genuine Green Tourmaline, A | H |
| 38 Genuine Triangle Diamond, SI1, G-I | N | 124 Genuine Marquise Diamond, I1, G-I | N | 161 Genuine Cab Ethiopian Opal, A | N |
| 43 Genuine Faceted Amethyst, AA | H | 137 Genuine Faceted Turquoise - Blue | N | 629 Genuine Alexandrite, A | N |
| 45 Genuine Aquamarine, AA | H | 141 Genuine Marquise Diamond, I1, G-I | N | 430 Genuine Baby Pink Topaz, A | H |
| 46 Genuine Faceted Blue Zircon, AA | H | 156 Genuine Faceted Tanzanite, AA | H | 65 Genuine Ruby, A | H |
| 48 Genuine Faceted Citrine, AA | H | 158 Genuine Cab Opal, AAA | N | 66 Genuine Ruby, AA | H |
| 50 Genuine Faceted Emerald, A | O | 186 Genuine Faceted Mexican Fire Opal, AA | N | 68 Genuine Blue Sapphire, AA | H |
| 51 Genuine Faceted Emerald, AA | O | 241 Genuine Trapezoid Diamond, SI1, G-H | N | | |

Stuller.com
800 877 7777

Back cover, top to bottom:

86967 Diamond French-Set J-Hoop Earrings, 5/8 CTW, 15.2x2.1mm, 14K White, 33, \$1,789 per pair. Mounting **86967**, \$235 each.

123993 Three-Stone Diamond Anniversary Band, 1/2 CTW, 14K White, 21, 32, size 7, \$949. Mounting **123993**, \$339.

124033 Diamond Stackable Ring, 1/8 CTW, 14K Yellow, 32, size 7, \$679. Mounting **124033**, \$359.

51915 Rope-Edge Patterned Band, 6mm width, 14K White, size 11, \$1,745

123913 Round-Shape Halo-Style Semi-Set Engagement Ring, 1 CT center (6.5mm), 1/2 CTW, 14K Yellow, 21, 32, size 7, \$2,205. Mounting **123913**, \$635.

Front cover, clockwise from left:

124038 Diamond Vintage-Inspired Ring, 1/4 CTW, 14K Yellow, 21, 33, \$1,435. Mounting **124038**, \$855.

72084 Genuine Ruby and Diamond Halo-Style Ring, 1-7x5mm center, 3/8 CTW, 14K Rose, 66, 33, \$12,305. Mounting **72084**, \$665.

86965 Diamond Geometric Necklace, 1/4 CT, 20.9x8.6mm, 14K Rose, 34, 18", \$1,399. Mounting **86965**, \$489.

86926 Diamond Freeform Necklace, 1/2 CTW, 19.5x7.6mm, 14K White, 117, 32, 16-18", \$2,119. Mounting **86926**, \$425. Semi-Set **86926**, \$835.

86982 Genuine Morganite and Diamond Starburst Earrings, 1 CTW, 13x13mm, 14K White, 23, 33, 5/8", \$3,602 per pair. Mounting **86982**, \$337 each. Semi-Set **86982**, \$3,602 per pair.

All prices are suggested retail based on \$1,300 gold, \$1,000 platinum, \$1,000 palladium, and \$18.00 silver and are subject to change without notice. Visit Stuller.com for complete product selections, current pricing, and availability.



@stullerinc | #HowIStuller