

HOLIDAY GIFT GUIDE

2017

Mix and Mingle

*Celebrate the
holidays in style*



 STULLER

A Holiday Centerpiece

Rich ruby reds, deep royal blues, collectible stackables, and modern geometric pieces make up this season's medley.

For Trends and Tips
Visit [Facebook.com/Stullerinc](https://www.facebook.com/Stullerinc)
#HowIStuller



A. **67337** Diamond Bracelet, 2 CTW, 2.2mm, 14K Rose, 545, 8", **\$4,795**. Mounting 67337, **\$1,569**. | B. **BRC761** Beaded Bracelet, 3.8mm, 14K Yellow, 7.75", **\$1,309** | C. **BRC763** Diamond Bracelet, ¼CTW, 1.9mm, 14K White, 545, 8", **\$1,459**. Mounting BRC763, **\$1,059**. | D. **86750** Chatham® Created Ruby and Diamond Bar Necklace, 6x4mm, 0.025 CTW, 11.6x5.5mm, 14K Yellow, 6, 33, 16", **\$665**. Mounting 86750, **\$335**. | E. **86706** Diamond Bar Necklace, ½ CTW, 20.46x3.43mm, 14K White, 33, 16-18", **\$885** | F. **71973** Genuine Peridot and Diamond Stackable Ring, 5x3mm, ⅙ CTW, 14K Yellow, 61, 33, **\$825**. Mounting 71973, **\$339**. Shown on box **61-1130** Timber (Gray). | G. **71973** Genuine Pink Sapphire and Diamond Stackable Ring, 5x3mm, ⅙ CTW, 14K Rose, 70, 33, **\$1,045**. Mounting 71973, **\$339**. Shown on box **61-1130** Timber (Gray). | H. **71973** Genuine London Blue Topaz and Diamond Stackable Ring, 5x3mm, ⅙ CTW, 14K White, 55, 33, **\$825**. Mounting 71973, **\$359**. Shown on box **61-1130** Timber (Gray).

J. **123548** Round-Shape Diamond-Accented Semi-Set Engagement Ring, 1 CT Center (6.5mm), 0.04 CTW, 14K White, 32, size 7, **\$625**. Mounting 123548, **\$449**. | K. **123541** Oval-Shape Halo-Style Semi-Set Engagement Ring, 1 CT Center (8x6mm), ⅙ CTW, 14K White, 32, **\$2,809**. Mounting 123541, **\$709**. | L. **123519** Diamond Two-Stone Negative Space Ring, 0.06 CTW, 14K Rose, 33, **\$545**. Mounting 123519, **\$795**. | M. **86757** Star Earrings, 9.7x9.2mm, 14K Rose, **\$199 per pair** | N. **86742** Interlocking Circle Necklace, 20.1x14mm, 14K Yellow, 16-18", **\$439** | P. **86790** Genuine Blue Sapphire and Diamond Necklace, 4x2mm, ⅙ CTW, 31.7x3.5mm, 14K White, 67, 33, 16-18", **\$1,549**. Mounting 86790, **\$385**. | Q. **653425** Birthstone Script Nameplate Necklace, 1.5mm, 26x8mm, 14K Rose, 361, 18", **\$655** | R. **86776** Diamond Hoop Earrings, 0.06 CTW, 11.5x2.6mm, 14K Yellow, 33, **\$425 per pair**. Mounting 86776, **\$135 each**. | S. **51820** Crescent Ring, 8.9mm, 14K Yellow, **\$369**

The Crown Jewels

Reign and shine with royalty-inspired styles that are sure to make any occasion a knight to remember.

A. **85654** Chatham® Created Blue Sapphire and Diamond Necklace, 8x6mm, 1/3 CTW, 21.7x10.8mm, 14K White, 67, 33, 18", **\$2,005**. Mounting 85654, **\$315**.
B. **86653** Beaded Disc Necklace, 15.8x10.7mm, 14K Yellow, 16-18", **\$459** | C. **86770** Curved Bar Necklace, 25.3x11.1mm, 14K Rose, 16-18", **\$469**
D. **86715** White Freshwater Cultured Pearl and Diamond Bar Necklace, 3.0mm, 1/8 CTW, 24.1x6.1mm, 14K Yellow, 16, 33, 16-18", **\$845**.
Mounting 86715, **\$365**. | E. **71990** Genuine Blue Sapphire and Aquamarine Two-Stone Ring, 6x4mm, 4x4mm, 14K White, 67, 45, **\$1,555**. Mounting 71990, **\$559**.
F. **51806** Crown Ring, 6.2mm width, 14K Rose, **\$405**

G. **71972** Chatham® Created Blue Sapphire Crown Ring, 2.0mm, 14K Yellow, 7, **\$779**. Mounting 71972, **\$425**. | H. **71974** Genuine Pink Tourmaline and Diamond Crown Ring, 3.0mm, 0.06 CTW, 14K Rose, 33, **\$935**. Mounting 71974, **\$479**. | J. **86699** Freeform J-Hoop Earrings, 13.3x9.1mm, 14K Rose, **\$435 per pair** | K. **652841** Diamond Y Necklace, 1/10 CTW, 14K White, 545, 16-18" chain with 1.4" drop, **\$599**. Shown in front of box **41-5580** Amber Wood.
L. **86506** Diamond Earrings, 1/4 CTW, 12.5x1.9mm, 14K Yellow, 33, **\$1,219**. Mounting 86506, **\$255 each**.



Stately Stackables

Mix and match to create a look that rules.

A. **123392** Diamond Anniversary Band, $\frac{3}{8}$ CTW, 14K White, 26, 32, **\$1,475**. Mounting 123392, **\$355** | B. **51798** Scalloped Geometric Ring, 5.5mm width, 14K Yellow, **\$625** | C. **123432** Diamond Beaded Heart Ring, 0.05 CTW, 14K Rose, 33, **\$635**. Mounting 123432, **\$535** | D. **51761** Crown Ring, 6.3mm width, 14K White, **\$455** | E. **652378** Diamond Ring, 1 CTW, 14K Yellow, 545, **\$3,045** | F. **71974** Genuine Blue Zircon and Diamond Crown Ring, 0.06 CTW, 14K Yellow, 46, 33, **\$795**. Mounting 71974, **\$475**.

G. **123431** Diamond Crown Ring, 0.04 CTW, 14K White, 33, **\$539**. Mounting 123431, **\$509** | H. **123471** Diamond Ring, $\frac{1}{4}$ CTW, 14K Rose, 33, **\$1,325**. Mounting 123471, **\$729** | J. **6508** White Freshwater Cultured Pearl and Diamond Ring, 2.0mm pearl, $\frac{1}{8}$ CTW, 14K Yellow, 16, 33, **\$919**. Mounting 6508, **\$349**. K. **51821** Geometric Ring, 6.6mm width, 14K Rose, **\$365**



123433 Diamond Crown Ring, $\frac{1}{8}$ CTW, 14K Yellow, 33, **\$755**. Mounting 123433, **\$515**.

51650 Vintage-Inspired Ring, 3.7mm width, 14K Rose, **\$479**

71921 Genuine Aquamarine and Diamond Ring, 2.5mm, 0.03 CTW, 14K White, 45, 33, **\$635**. Mounting 71921, **\$435**.



51790 Beaded Heart Ring, 4mm width, 14K Rose, **\$469**

652244 Diamond Ring, $\frac{1}{10}$ CTW, 14K White, 545, **\$459**

123422 Diamond Heart Anniversary Band, $\frac{1}{8}$ CTW, 14K Yellow, 32, **\$939**. Mounting 123422, **\$425**.



71972 Genuine Aquamarine Crown Ring, 2.0mm, 14K White, 45, **\$935**. Mounting 71972, **\$445**.

123324 Diamond Anniversary Band, $\frac{1}{3}$ CTW, 14K Yellow, 32, **\$1,369**. Mounting 123324, **\$625**.

51637 Geometric Ring, 3.8mm width, 14K Rose, **\$349**



51816 Crown Ring, 5.2mm width, 14K White, **\$415**

123210 Diamond Ring, 0.04 CTW, 14K Yellow, 33, **\$405**. Mounting 123210, **\$285**.

652404 Beaded Ring, 3mm width, 14K Rose, **\$545**



51789 Crown Ring, 4.7mm width, 14K Yellow, **\$429**

71923 Genuine Ruby Beaded Ring, 2.0mm, 14K Rose, 66, **\$809**. Mounting 71923, **\$365**.

123434 Diamond Ring, $\frac{1}{8}$ CTW, 14K White, 33, **\$995**. Mounting 123434, **\$525**.



51668 Crown Ring, 4mm width, 14K Rose, **\$355**

123441 Diamond Infinity Anniversary Band, $\frac{1}{2}$ CTW, 14K White, 32, **\$1,595**. Mounting 123441, **\$629**.

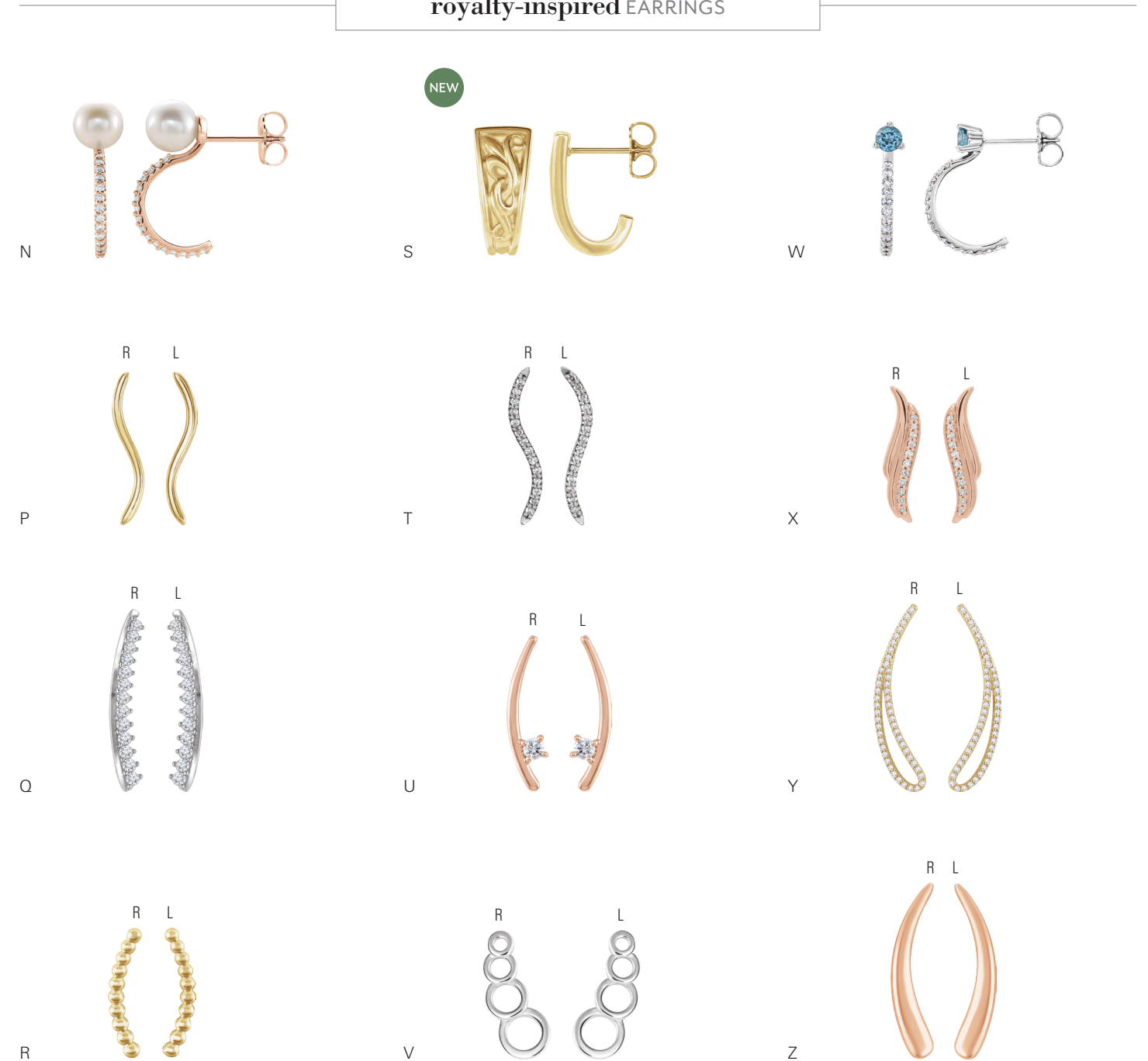
123087 Diamond Ring, $\frac{1}{8}$ CTW, 14K Yellow, 33, **\$755**. Mounting 123087, **\$465**.

royalty-inspired NECKWEAR



- A **86516** Vintage-Inspired Necklace, 12.4mm, 14K Rose, 18", **\$449**
- B **86703** Scroll Bar Necklace, 27.6x4.3mm, 14K Yellow, 16-18", **\$449**
- C **653060** Diamond Twisted Bar Necklace, ¼ CTW, 32.7x12mm, 14K White, 545, 16-18", **\$1,169**
- D **86729** Diamond Bar Necklace, ⅓ CTW, 11.3x2.8mm, 14K Yellow, 20, 33, 16-18", **\$999**. Mounting 86729, **\$289**.
- E **86713** Diamond Curved Bar Necklace, ⅓ CTW, 25.1x9.5mm, 14K White, 16-18", **\$865**. Mounting 86713, **\$499**.
- F **86706** Diamond Bar Necklace, ⅓ CTW, 20.5x3.4mm, 14K Rose, 33, 16-18", **\$829**. Mounting 86706, **\$379**.
- G **86666** Horn Necklace, 23.3x7.1mm, 14K Yellow, 16-18", **\$365**
- H **86660** Diamond Rope Bar Necklace, 0.08 CTW, 15x3.5mm, 14K Rose, 33, 16-18", **\$599**. Mounting 86660, **\$385**.
- J **86667** Diamond Eye of Providence Necklace, ⅓ CT, 18.9x14.4mm, 14K Yellow, 33, 16-18", **\$705**. Mounting 86667, **\$295**.
- K **86681** Diamond Curved Bar Necklace, 0.06 CTW, 26.5x3mm, 14K White, 33, 16-18", **\$535**
- L **86645** Twisted Bar Necklace, 36.4x2.2mm, 14K Rose, 16-18", **\$359**
- M **651885** Diamond Bar Necklace, ½ CTW, 28x2.8mm, 14K White, 545, 16-18", **\$1,605**

royalty-inspired EARRINGS



- N **86643** White Freshwater Cultured Pearl and Diamond J-Hoop Earrings, 6.0-6.5mm Pearl, ⅓ CTW, 14.7x1.4mm, 14K Rose, 16, 33, **\$769 per pair**. Mounting 86643, **\$145 each**.
- S **86732** Vintage-Inspired J-Hoop Earrings, 14.5x7.2mm, 14K Yellow, **\$585 per pair**
- T **86371** Diamond Ear Climbers, ⅓ CTW, 18.5x2.3mm, 14K White, 33, **\$589 per pair**. Mounting 86371, **\$119 each**.
- U **86521** Diamond Ear Climbers, ⅓ CTW, 17.8x3.8mm, 14K Rose, 33, **\$545 per pair**. Mounting 86521, **\$125 each**.
- V **86675** Geometric Ear Climbers, 14.6x5.9mm, 14K White, **\$285 per pair**
- W **86686** Genuine Aquamarine and Diamond J-Hoop Earrings, 3mm, ⅓ CTW, 14.4x1.5mm, 14K White, 45, 33, **\$965 per pair**. Mounting 86686, **\$159 each**.
- X **86651** Diamond Ear Climbers, 0.07 CTW, 15.6x3.8mm, 14K Rose, 33, **\$439 per pair**. Mounting 86651, **\$119 each**.
- Y **652486** Diamond Ear Climbers, ¼ CTW, 21.4x5.5mm, 14K Yellow, 545, **\$1,095 per pair**
- Z **51723** Curved Ear Climbers, 20.2x2mm, 14K Rose, **\$479 per pair**
- P **86483** Ear Climbers, 18.8x3.3mm, 14K Yellow, **\$185 per pair**
- Q **652342** Diamond Ear Climbers, ⅓ CTW, 20.8x2.7mm, 14K White, 545, **\$1,135 per pair**
- R **86498** Beaded Ear Climbers, 14.7x1.7mm, 14K Yellow, **\$225 per pair**

Royal Trimmings

Dignified hues of rich blue



651989 Genuine Blue Sapphire and Diamond Stackable Ring, 2.2mm, 1/2 CTW, 14K White, 606, 110, **\$875**

71814 Genuine Blue Sapphire Stackable Ring, 1.7mm, 14K Yellow, 67, **\$535**. Mounting 71814, **\$345**.

71991 Genuine Blue Sapphire Stackable Beaded Ring, 2.5mm, 14K Rose, 67, **\$769**. Mounting 71991, **\$379**.

86458 Chatham® Created Blue Sapphire and Diamond Earrings, 5.0mm, 1/2 CTW, 7.6mm, 14K White, 7, 33, **\$1,269 per pair**. Mounting 86458, **\$155 each**.

86563 Chatham® Created Blue Sapphire Hoop Earrings, 2.5x2.5mm, 14.1x3.6mm, 14K Yellow, 7, **\$1,069 per pair**. Mounting 86563, **\$329 each**.

68602 Genuine Blue Sapphire and Diamond Earrings, 5.0mm, 3/8 CTW, 14K White, 67, 33, **\$4,219 per pair**. Mounting 84993, **\$179 each**.

86701 Genuine Blue Sapphire Petite Ear Climbers, 11.1x4.4mm, 14K White, 67, **\$949**. Mounting 86701, **\$179 each**.

A 122932 Chatham® Created Blue Sapphire Ring, 4x2mm, 14K Rose, 7, **\$1,429**. Mounting 122932, **\$429**. | **B. 71883** Chatham® Created Blue Sapphire and Diamond Stackable Ring, 6x4mm, 0.02 CTW, 14K Yellow, 7, 33, **\$715**. Mounting 71893, **\$499**. | **C. 86661** Chatham® Created Blue Sapphire Pendant, 6x4mm, 10.2x4.3mm, 14K Yellow, **\$549**. Mounting 86661, **\$155**. Shown with CH132. | **D. 650183** Genuine Blue Sapphire Inside-Outside Hoop Earrings, 1.5mm, 26.6x1.5mm, 14K White, 101, **\$1,635 per pair** | **E. 651539** Created Blue Sapphire Bracelet, 6x4mm, 14K Yellow, 516, 7", **\$549**

F. 28190 Chatham® Created Blue Sapphire Scroll Setting® Earrings, 4.0mm, 14K White, 7, **\$475 per pair**. Mounting 28190, **\$49 each**.

royal-inspired BLUE SAPPHIRE JEWELRY

NEW



71990 Genuine Blue Sapphire and Aquamarine Two-Stone Ring, 6x4mm, 4x4mm, 14K White, 67, 45, **\$1,555**. Mounting 71990, **\$559**.

3C



123073 Chatham® Created Blue Sapphire and Diamond Two-Stone Ring, 6x4mm, 1/2 CTW, 14K Rose, 7, 33, **\$1,555**. Mounting 123073, **\$449**.

3C



71893 Genuine Blue Sapphire Two-Stone Ring, 3.5mm, 14K Yellow, 67, **\$1,115**. Mounting 71893, **\$499**.



71996 Genuine Blue Sapphire Three-Stone Ring, 2.5mm, 14K White, 67, **\$609**. Mounting 71996, **\$419**.

3C



71861 Genuine Blue Sapphire and Diamond Ring, 6mm, 1/2 CTW, 14K White, 68, 33, **\$3,255**. Mounting 71861, **\$519**.

3C



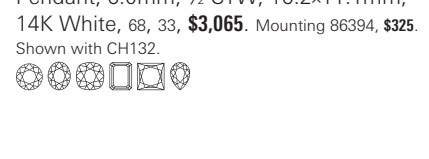
71931 Chatham® Created Blue Sapphire and Diamond Ring, 5.5mm, 1/10 CTW, 14K Rose, 33, **\$1,105**. Mounting 71931, **\$535**.

3C



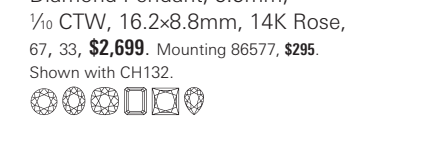
71606 Chatham® Created Blue Sapphire and Diamond Ring, 8x6mm, 3/8 CTW, 14K Yellow, 7, 33, **\$2,165**. Mounting 71606, **\$465**.

NEW



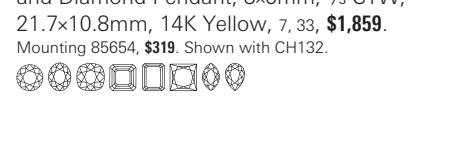
86394 Genuine Blue Sapphire and Diamond Pendant, 6.0mm, 1/2 CTW, 16.2x11.1mm, 14K White, 68, 33, **\$3,065**. Mounting 86394, **\$325**. Shown with CH132.

3C



86577 Genuine Blue Sapphire and Diamond Pendant, 5.5mm, 1/10 CTW, 16.2x8.8mm, 14K Rose, 67, 33, **\$2,699**. Mounting 86577, **\$295**. Shown with CH132.

3C



85654 Chatham® Created Blue Sapphire and Diamond Pendant, 8x6mm, 1/3 CTW, 21.7x10.8mm, 14K Yellow, 7, 33, **\$1,859**. Mounting 85654, **\$319**. Shown with CH132.

3C



86740 Genuine Blue Sapphire and Diamond Pendant, 6mm, 1/5 CTW, 16.1x10.3mm, 14K White, 67, 33, **\$4,859**. Mounting 86740, **\$349**. Shown with CH123.

3C



86696 Chatham® Created Blue Sapphire and Diamond Pendant, 6.0mm, 0.04 CTW, 16x11mm, 14K White, 7, 33, **\$839**. Mounting 86696, **\$239**. Shown with CH132.

3C



86576 Chatham® Created Blue Sapphire and Diamond Pendant, 6x4mm, 1/5 CTW, 19.9x7.5mm, 14K White, 7, 33, **\$829**. Mounting 86576, **\$335**. Shown with CH132.

3C



85437 Chatham® Created Blue Sapphire and Diamond Pendant, 10x7mm, 1/2 CTW, 29.1x18.6mm, 14K White, 7, 33, **\$3,379**. Mounting 85437, **\$415**. Shown with CH123.

An Ethereal Evening

Capture the stars with dainty crescent shapes, dreamy hues, and twilight-inspired accents.



A. **86657** Genuine Cabochon Opal and Diamond Earrings, 6.0mm, 1/8 CTW, 10.3mm, 14K Rose, 158, 33, **\$1,379 per pair**. Mounting 86657, **\$159 each**. Shown in box **61-7191** Milano (Cream). | B. **86632** Crescent Necklace, 11.8x11.4mm, 14K Two-Tone, 16-18", **\$415** | C. **86431** Genuine Morganite and Diamond Pendant, 6x4mm, 0.03 CTW, 19x7.2mm, 14K Rose, 627, 33, **\$555**. Mounting 86431, **\$265**. Shown with CH132. | D. **86771** Starburst Earrings, 7.8mm, 14K White, **\$335 per pair** | E. **71934** Genuine Cabochon Opal and Diamond Ring, 8x6mm, 14K White, 158, 33, **\$1,615**. Mounting 71934, **\$615**.

F. **51569** Crescent Ring, 6.3mm width, 14K Yellow, **\$309** | G. **71878** Genuine Morganite and Diamond Ring, 7x5mm, 0.08 CTW, 14K Rose, 627, 33, **\$1,049**. Mounting 71878, **\$675**. | H. **86693** Crescent Necklace, 19.5x15mm, 14K Yellow, 16-18", **\$459** | J. **652310** Diamond Circle Y Necklace, 1/10 CTW, 14K White, 545, 16-18" chain with 2.5" drop, **\$899** | K. **86717** Genuine Cabochon Opal Necklace, 20.4x15.1mm, 14K Yellow, 158, 16-18", **\$689**. Mounting 86717, **\$329**. | L. **71821** Genuine Cabochon Rainbow Moonstone and Diamond Ring, 8.0mm, 1/8 CTW, 14K Rose, 614, 33, **\$1,079**. Mounting 71821, **\$545**. | M. **86752** Diamond Geometric Cluster Earrings, 1/8 CTW, 5.7x5.3mm, 14K Yellow, 33, **\$769 per pair**. Mounting 86752, **\$125 each**.

twilight-inspired RINGS AND NECKWEAR



A



A **123521** Diamond Star Ring, 0.03 CT, 14K Yellow, 33, **\$415**. Mounting 123521, **\$345**.

123520 Diamond Stackable Cluster Ring, $\frac{1}{10}$ CTW, 14K Rose, 33, **\$565**. Mounting 123520, **\$349**.

51820 Crescent Ring, 8.9mm width, 14K Yellow, **\$369**

123287 Diamond Stackable Ring, $\frac{1}{2}$ CTW, 14K White, 33, **\$1,975**. Mounting 123287, **\$335**.

B **86623** Diamond Hamsa Necklace, 0.03 CT, 19.2x9mm, 14K White, 33, 16-18", **\$479**. Mounting 86623, **\$245**.

C **86692** Diamond Moon Necklace, $\frac{1}{3}$ CTW, 19.5x15mm, 14K Rose, 33, 16-18", **\$1,255**. Mounting 86692, **\$309**.

D **86624** Diamond Crescent Necklace, 11.5mm, 14K White, 16-18", **\$459**

E **86607** Petite Crescent Necklace, 10.8x4.8mm, 14K Yellow, 16-18", **\$299**

F **86649** Starburst Disc Necklace, 13.5x11mm, 14K Rose, 16-18", **\$455**

G **86742** Interlocking Circle Necklace, 20.1x14mm, 14K Yellow, 16-18", **\$439**

twilight-inspired EARRINGS



H



M



R



J



N



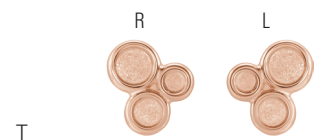
S



K



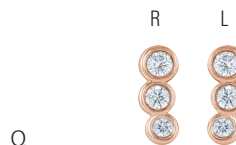
P



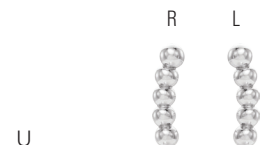
T



L



Q



U

H **86461** Lightning Bolt Earrings, 10.1x3.1mm, 14K Rose, **\$129 per pair**

J **86608** Geometric Earrings, 4.9mm, 14K Yellow, **\$225 per pair**

K **86435** Diamond Star Earrings, 0.08 CTW, 7.4mm, 14K White, 33, **\$479 per pair**. Mounting 86435, **\$129 each**.

L **86767** White Freshwater Cultured Pearl and Diamond Earrings, 4.5-5.0mm pearl, 0.08 CTW, 6.3mm, 14K Yellow, 16, 33, **\$535 per pair**. Mounting 86767, **\$139 each**.

M **86449** Diamond Crescent Earrings, 0.005 CTW, 9.4x6.4mm, 14K White, 33, **\$275 per pair**. Mounting 86449, **\$135 each**.

N **86688** Diamond Circle Earrings, 0.06 CTW, 7.3mm, 14K Rose, 33, **\$379 per pair**. Mounting 86688, **\$115 each**.

P **86683** Diamond Crescent Earrings, 9.7x8.5mm, 14K Yellow, 33, **\$439 per pair**. Mounting 86683, **\$159 each**.

Q **86691** Diamond Petite Ear Climbers, $\frac{1}{10}$ CTW, 7.8x3.1mm, 14K Rose, 33, **\$519 per pair**. Mounting 86691, **\$109 each**.

R **86749** Diamond Star Earrings, 0.03 CTW, 9.7x9.2mm, 14K Yellow, 33, **\$355 per pair**. Mounting 86749, **\$115 each**.

S **86664** Diamond Halo-Style Earrings, $\frac{3}{4}$ CTW, 7.4 mm, 14K White, 33, **\$3,155 per pair**. Mounting 86664, **\$179 each**.

T **86755** Geometric Cluster Earrings, 5.7x5.3mm, 14K Rose, **\$115 per pair**

U **86646** Petite Beaded Ear Climbers, 8.3x1.9mm, 14K White, **\$185 per pair**

Dancing in the Moonlight

A whimsical whirl of morganite, moonstone, and opal jewelry



86587 Genuine Rainbow Moonstone and Diamond Pendant, 5x3mm, 0.03 CTW, 15x6.6mm, 14K Rose, 614, 33, **\$349**. Mounting 86587, **\$199**. Shown with CH132.

71939 Genuine Rainbow Moonstone and Diamond Ring, 6x4mm, 0.03 CTW, 14K Rose, 614, 33, **\$569**. Mounting 71939, **\$445**.



71811 Genuine Rainbow Moonstone and Diamond Ring, 7x5mm, 0.06 CTW, 14K White, 614, 33, **\$559**. Mounting, 71811, **\$399**.



71821 Genuine Rainbow Moonstone and Diamond Ring, 8.0mm, 1/10 CTW, 14K White, 614, 33, **\$1,069**. Mounting 71821, **\$559**.

A. **86584** Genuine Cabochon Opal Pendant, 5x3mm, 19.6x7.6mm, 14K Yellow, 158, **\$295**. Shown with CH132. | B. **71812** Genuine Cabochon Opal and Diamond Ring, 7x5mm, 1/10 CTW, 14K White, 158, 33, **\$959**. Mounting 71812, **\$425**. | C. **651986** Genuine Morganite and Diamond Earrings, 5.1mm, 1/10 CTW, 8.5mm, 14K Rose, 253, 110, **\$1,235 per pair**. | D. **651635** Created Opal Bracelet, 7x5mm, 14K White, 7.5", 521, **\$599**. | E. **71695** Genuine Cabochon Rainbow Moonstone Ring, 7x5mm, 14K Yellow, 135, **\$375**. Mounting 71695, **\$315**. | F. **71965** Genuine Morganite and Diamond Bypass Ring, 5.0mm, 1/10 CTW, 14K Rose, 253, 33, **\$865**. Mounting 71965, **\$395**.

twilight-inspired OPAL JEWELRY



23482 Genuine Cabochon Opal Earrings, 5.0mm, 14K White, 158, **\$509 per pair**. Mounting 23482, **\$59 each**.



86657 Genuine Cabochon Opal and Diamond Earrings, 6.0mm, 1/10 CTW, 10.3mm, 14K Rose, 158, 33, **\$1,379 per pair**. Mounting 86657, **\$159 each**.



71959 Genuine Cabochon Opal Stackable Beaded Ring, 2.5mm, 14K Rose, 60, **\$365**. Mounting 71959, **\$285**.



71957 Genuine Cabochon Opal Stackable Ring, 3.0mm, 14K Yellow, 60, **\$779**. Mounting 71957, **\$579**.



71969 Genuine Cabochon Opal and Diamond Stackable Ring, 3.0mm, 1/10 CTW, 14K Yellow, 158, 33, **\$825**. Mounting 71969, **\$429**.



71964 Genuine Cabochon Opal Stackable Ring, 2.5mm, 14K White, 158, **\$459**. Mounting 71964, **\$339**.



71967 Genuine Cabochon Opal Three-Stone Ring, 2.0mm, 14K Rose, 60, **\$739**. Mounting 71967, **\$619**.



71935 Genuine Cabochon Opal Ring, 7x5mm, 14K Yellow, 158, **\$745**. Mounting 71935, **\$589**.



71933 Genuine Cabochon Opal Rope Ring, 8x6mm, 14K Rose, 158, **\$775**. Mounting 71933, **\$519**.



G. **86480** Genuine Cabochon Opal and Diamond Pendant, 6.0mm, 1/10 CTW, 16.1x9.8mm, 14K Rose, 158, 33, **\$809**. Mounting 86480, **\$229**. Shown with CH105.

H. **86583** Genuine Cabochon Opal Two-Stone Pendant, 4.0mm, 19.7x8.7mm, 14K Rose, 158, **\$489**. Mounting 86583, **\$325**. Shown with CH12.

J. **86508** Genuine Cabochon Opal Three-Stone Pendant, 4.0mm, 19.5x9.4mm, 14K Yellow, 158, **\$585**. Mounting 86508, **\$319**. Shown with CH132.

twilight-inspired MORGANITE JEWELRY

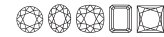


71922 Genuine Morganite Knot Ring, 6x4mm, 14K Rose, 627, **\$569**. Mounting 71922, **\$535**.

3C



71946 Genuine Morganite and Diamond Ring, 6x4mm, 1/8 CTW, 14K Rose, 627, 33, **\$1,379**. Mounting 71946, **\$465**.



71878 Genuine Morganite and Diamond Ring, 7x5mm, 0.08 CTW, 14K Rose, 627, 33, **\$1,049**. Mounting 71878, **\$675**.



71903 Genuine Morganite and Diamond Two-Stone Ring, 6x4mm, 1/8 CTW, 14K Rose, 627, 33, **\$935**. Mounting 71903, **\$359**.

3C



71913 Genuine Morganite and Diamond Ring, 7x5mm, 0.04 CTW, 14K Rose, 627, 33, **\$699**. Mounting 71913, **\$445**.



652378 Genuine Morganite and Diamond Ring, 3.0mm, 1/8 CTW, 14K Rose, 518, 545, **\$1,639**



86733 Genuine Morganite and Diamond Pendant, 8x6mm, 1/8 CTW, 14K Rose, 627, 33, **\$1,369**. Mounting 86733, **\$435**. Shown with CH123.



71985 Genuine Morganite and Diamond Ring, 8x6mm, 1/8 CTW, 14K Rose, 627, 33, **\$1,805**. Mounting 71985, **\$765**.



86431 Genuine Morganite and Diamond Pendant, 6x4mm, 0.03 CTW, 19x7.2mm, 14K Rose, 627, 33, **\$555**. Mounting 86431, **\$265**. Shown with CH123.



71875 Genuine Morganite and Diamond Ring, 6x4mm, 0.03 CTW, 14K Rose, 627, 33, **\$815**. Mounting 71875, **\$475**.



71604 Genuine Morganite and Diamond Ring, 7x5mm, 1/8 CTW, 14K Rose, 627, 33, **\$1,059**. Mounting 71604, **\$469**.



652021 Genuine Morganite and Diamond Ring, 7x5mm, 1/8 CTW, 14K Rose, 253, 110, **\$1,035**



71626 Genuine Morganite Ring, 7x5mm, 14K Rose, 627, **\$665**. Mounting 71626, **\$419**.



122744 Genuine Morganite and Diamond Halo-Style Ring, 5x3mm, 0.06 CTW, 14K Rose, 627, 33, **\$589**. Mounting 122744, **\$369**.



651501 Genuine Morganite and Diamond Ring, 8x6mm, 0.06 CTW, 14K Rose, 253, 110, **\$985**.

3C



71855 Genuine Morganite and Diamond Ring, 6x4mm, 1/8 CTW, 14K Rose, 627, 33, **\$1,999**. Mounting 71855, **\$869**.



651509 Genuine Morganite and Diamond Ring, 8x6mm, 1/8 CTW, 14K Rose, 253, 110, **\$1,335**



651875 Genuine Morganite and Diamond Earrings, 7x5mm, 1/8 CTW, 14K Rose, 253, 110, **\$1,399 per pair**



652613 Genuine Morganite Earrings, 10x7mm, 14K Rose, 518, **\$1,675 per pair**

Warm Wishes

Cozy combinations of ruby reds and golden hues

A



B



D



F



G



E



H



J



K



L

A. 86593 Freeform Pendant, 20.9x6.7mm, 14KY Yellow, \$195. Shown with CH132. | B. 85938 White Freshwater Cultured Pearl Pendant, 5.5-6.0mm Pearl, 19.6x9.6mm, 14K Yellow, 16, \$209. Mounting 85938, \$175. Shown on CH123. | C. 86741 Freeform Necklace, 25.2x8.5mm, 14K Rose, 16-18", \$445. Mounting 85435, \$435. Shown on CH123. | D. 85435 Chatham® Created Ruby and Diamond Pendant, 8.0mm, 1/2 CTW, 27.8x16.4mm, 14K White, 6, 33, \$3,479. Mounting, 85435, \$435. Shown on CH123. | E. 123509 Diamond Two-Stone Ring, 1/2 CTW, 9.4mm, 14K Yellow, 33, \$1,259. Mounting 123509, \$919. | F. 51812 Double Loop Ring, 15.1mm width, 14K Yellow, \$499 | G. 86493 Genuine Ruby Hoop Earrings, 2.5mm, 12.3x3.8mm, 14K White, 66, \$1,509 per pair. Mounting 86493, \$245 each.

H. 652349 Diamond Criss-Cross Bracelet, 3/4 CTW, 16mm, 14K White, 545, 6", \$3,585 | J. 71986 Chatham® Created Ruby and Diamond Ring, 6x4mm, 1/2 CTW, 14K Rose, 6, 33, \$1,219. Mounting 71986, \$669. Shown on box 41-6401 Clip Corner Collection (Burgundy). | K. 51796 Freeform Ring, 6mm width, 14K White, \$485. Shown on box 41-6401 Clip Corner Collection (Burgundy). | L. 123515 Diamond Freeform Ring, 1/2 CT, 9.7mm, 14K Rose, 33, \$925. Mounting 123515, \$545.



A



E



J



B



F



K



C



G



L



D



H



M

A **123370** Diamond Bypass Ring, ¼ CT, 14K White, 33, **\$1,575**. Mounting 123370, **\$439**.

B **71930** Genuine Aquamarine and Diamond Ring, 3.5mm, 0.05 CTW, 14K Rose, 45, 33, **\$979**. Mounting 71930, **\$829**.

C **123518** Diamond Negative Space Ring, 0.04 CTW, 14K Yellow, 33, **\$895**. Mounting 123518, **\$759**.

D **123527** Diamond Negative Space Ring, ½ CT, 14K White, 33, **\$1,049**. Mounting 123527, **\$849**.

E **123110** Diamond Negative Space Ring, ¼ CT, 14K Yellow, 33, **\$1,529**. Mounting 123110, **\$355**.

F **651752** Diamond Criss-Cross Ring, ½ CTW, 14K White, 545, **\$885**.

G **51757** Negative Space Ring, 10mm width, 14K Rose, **\$515**.

H **51813** Criss-Cross Ring, 6.4mm width, 14K Yellow, **\$545**.

J **123383** Diamond Two-Stone Bypass Ring, ⅛ CTW, 14K Rose, 33, **\$1,019**. Mounting 123383, **\$805**.

K **51737** Rope Criss-Cross Ring, 7.5mm width, 14K Yellow, **\$515**.

L **51818** Negative Space Beaded Ring, 10mm width, 14K Two-Tone, **\$495**.

M **51769** Freeform Bypass Ring, 11.6mm width, 14K Rose, **\$719**.



N



P



Q

R

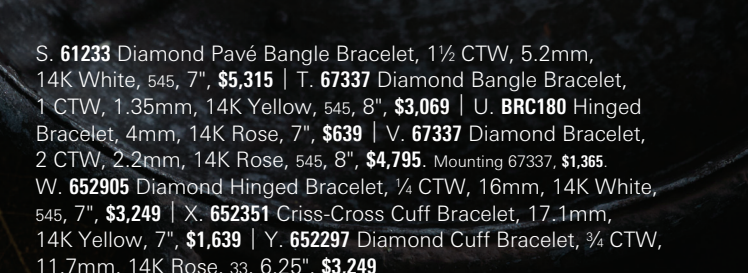
N **86292** Diamond Bar Necklace, ⅙ CTW, 40.3×11.1mm, 14K Rose, 33, 18", **\$845**.

P **86734** Freeform Necklace, 20×7.4mm, 14K White, 16-18", **\$399**.

Q **86629** Diamond Halo-Style Earrings, ⅝ CTW, 16.2×7.8mm, 14K Rose, 33, **\$3,289 per pair**. Mounting 86629, **\$269 each**.

R **652355** Geometric Dangle Earrings, 28.5×7.1mm, 14K Yellow, **\$705 per pair**.

The Flick of a Wrist



S. **61233** Diamond Pavé Bangle Bracelet, 1½ CTW, 5.2mm, 14K White, 545, 7", **\$5,315** | T. **67337** Diamond Bangle Bracelet, 1 CTW, 1.35mm, 14K Yellow, 545, 8", **\$3,069** | U. **BRC180** Hinged Bracelet, 4mm, 14K Rose, 7", **\$639** | V. **67337** Diamond Bracelet, 2 CTW, 2.2mm, 14K Rose, 545, 8", **\$4,795**. Mounting 67337, **\$1,365**. W. **652905** Diamond Hinged Bracelet, ¼ CTW, 16mm, 14K White, 545, 7", **\$3,249** | X. **652351** Criss-Cross Cuff Bracelet, 17.1mm, 14K Yellow, 7", **\$1,639** | Y. **652297** Diamond Cuff Bracelet, ¾ CTW, 11.7mm, 14K Rose, 33, 6.25", **\$3,249**.

Let It Glow

A shimmering collection of romantic shades fit for any event



71806 Chatham® Created Ruby Stackable Ring, 4.0mm, 14K White, 6, **\$729**. Mounting 71806, **\$459**.

71920 Genuine Ruby and Diamond Stackable Ring, 2.5mm, 0.025 CTW, 14K Yellow, 66, 33, **\$935**. Mounting 71920, **\$475**.

71895 Genuine Ruby Stackable Ring, 2.5mm, 14K Rose, 66, **\$999**. Mounting 71895, **\$359**.



123286 Genuine Ruby Stackable Ring, 3.0mm, 14K Rose, 66, **\$615**. Mounting 123286, **\$425**.

71831 Genuine Ruby Stackable Ring, 1.3mm, 3.6mm, 14K White, 66, **\$909**. Mounting 71831, **\$675**.

123113 Genuine Ruby Beaded Stackable Ring, 2.0mm, 14K Yellow, 66, **\$369**. Mounting 123113, **\$245**.



122932 Genuine Ruby Stackable Ring, 4x2mm, 14K Yellow, 66, **\$2,629**. Mounting 122932, **\$429**.

71883 Genuine Ruby and Diamond Stackable Ring, 6x4mm, 0.02 CTW, 14K Rose, 66, 33, **\$3,725**. Mounting 71883, **\$379**.

71813 Genuine Ruby Beaded Stackable Ring, 1.75mm, 14K White, 66, **\$645**. Mounting 71813, **\$389**.

A. **1874** Genuine Ruby Earrings, 5.0mm, 14K Yellow, 65, **\$7,205 per pair**. Mounting 1874, **\$45 each**. | B. **62076** Genuine Ruby and Diamond Bracelet, 3mm, 2½ CTW, 14K White, 65, 33, 7", **\$9,129** | C. **85861** Chatham® Created Ruby Scroll Setting® Pendant, 7x5mm, 13x7.8mm, 14K White, 6, **\$579**. Mounting 85861, **\$149**. Shown with CH132. | D. **86467** Chatham® Created Ruby and Diamond Halo-Style Pendant, 5x5mm, ½ CTW, 16.7x8.5mm, 14K Yellow, 6, 33, **\$1,209**. Mounting 86467, **\$285**. Shown with CH132. | E. **71884** Genuine Ruby Ring, 4x2mm, 14K Rose, 66, **\$1,349**. Mounting 71884, **\$975**. | F. **71886** Genuine Ruby Two-Stone Ring, 3mm, 14K White, 66, **\$749**. Mounting 71886, **\$359**.

ruby gemstone JEWELRY



86277 Chatham® Created Ruby and Diamond Earrings, 5x5mm, ⅙ CTW, 9.6mm, 14K Yellow, 6, 33, **\$1,369 per pair**. Mounting 86277, **\$269 each**.
○○○○□□



86589 Chatham® Created Ruby and Diamond Earrings, 5.0mm stones, ⅒ CTW, 7.6mm, 14K Rose, 6, 33, **\$1,229 per pair**. Mounting 86589, **\$195**.



86422 Chatham® Created Ruby and Diamond Pendant, 5.0mm, 0.07 CTW, 7.9mm, 14K Yellow, 6, 33, **\$939**. Mounting 86422, **\$199**. Shown with CH132.
○○○○□□

85435 Chatham® Created Ruby and Diamond Pendant, 8.0mm, ½ CTW, 27.8x16.4mm, 3x2.2 bail ID, 14K White, 6, 33, **\$3,479**. Mounting 85435, **\$435**. Shown with CH123.
○○○○□□○○○

86269 Chatham® Created Ruby and Diamond Pendant, 6x6mm, ⅒ CTW, 19.6x12.8mm, 14K White, 6, 33, **\$1,179**. Mounting 86269, **\$335**. Shown with CH132.



86492 Genuine Ruby J-Hoop Earrings, 3.0mm stones, 11x4.3mm, 14K Rose, 66, **\$809 per pair**. Mounting 86492, **\$185 each**.



86493 Genuine Ruby Hoop Earrings, 2.5mm, 12.3x3.8mm, 14K White, 66, **\$1,509 per pair**. Mounting 86493, **\$245 each**.



71806 Chatham® Created Ruby Stackable Ring, 4.0mm, 14K White, 6, **\$729**. Mounting 71806, **\$459**.

71920 Genuine Ruby and Diamond Stackable Ring, 2.5mm, 0.025 CTW, 14K Yellow, 66, 33, **\$935**. Mounting 71920, **\$475**.

71895 Genuine Ruby Stackable Ring, 2.5mm, 14K Rose, 66, **\$999**. Mounting 71895, **\$359**.



123286 Genuine Ruby Stackable Ring, 3.0mm, 14K Rose, 66, **\$615**. Mounting 123286, **\$425**.

71831 Genuine Ruby Stackable Ring, 1.3mm, 3.6mm, 14K White, 66, **\$909**. Mounting 71831, **\$675**.

123113 Genuine Ruby Beaded Stackable Ring, 2.0mm, 14K Yellow, 66, **\$369**. Mounting 123113, **\$245**.



122932 Genuine Ruby Stackable Ring, 4x2mm, 14K Yellow, 66, **\$2,629**. Mounting 122932, **\$429**.

71883 Genuine Ruby and Diamond Stackable Ring, 6x4mm, 0.02 CTW, 14K Rose, 66, 33, **\$3,725**. Mounting 71883, **\$379**.

71813 Genuine Ruby Beaded Stackable Ring, 1.75mm, 14K White, 66, **\$645**. Mounting 71813, **\$389**.



71983 Chatham® Created Ruby Ring, 6x4mm, 14K Rose, 6, **\$969**. Mounting 71983, **\$539**.
○○○○□□



71840 Chatham® Created Ruby Ring, 6.0mm, 14K White, 6, **\$1,425**. Mounting 71840, **\$629**.
○○○○□□



71914 Chatham® Created Ruby and Diamond Ring, 6.0mm, 0.06 CTW, 14K Yellow, 6, 33, **\$999**. Mounting 71914, **\$429**.
○○○○□□



71976 Chatham® Created Ruby and Diamond Ring, 7.0mm, ⅒ CTW, 14K White, 6, 33, **\$1,409**. Mounting 71976, **\$605**.



71986 Chatham® Created Ruby and Diamond Ring, 6x4mm, ⅙ CTW, 14K White, 6, 33, **\$1,199**. Mounting 71986, **\$679**.



71952 Chatham® Created Ruby and Diamond Halo-Style Ring, 6x4mm, ⅙ CTW, 14K White, 6, 33, **\$1,405**. Mounting 71952, **\$659**.
○○○○□□

Merry and Modern

Cool contours, trendy twists, and beautiful accents create festive gifts worth celebrating.

Need PInspiration?
Visit [Pinterest.com/Stullerinc](https://www.pinterest.com/Stullerinc)

A. **51721** Circle and Bar Y Necklace, 14K White, 16-18" chain with 3.1" drop, **\$549** | B. **86716** Diamond Milgrain Bar Necklace, 0.06 CTW, 24.9x5.4mm, 14K Rose, 33, 16-18", **\$649** | C. **86710** Genuine Emerald and Diamond Floral-Inspired Pendant, 6.0mm, 1/10 CTW, 13.5x5.7mm, 14K Yellow, 50, 26, **\$3,205**. Mounting 86710, **\$135**. Shown with CH132. | D. **86766** Leaf Necklace, 16x9mm, 14K Yellow, 16-18", **\$505** | E. **71982** Genuine Peridot and White Sapphire Two-Stone Ring, 5x3mm, 4.0mm, 14K Yellow, 61, 367, **\$509**. Mounting 71982, **\$459**. | F. **51781** Negative Space Beaded V Ring, 6.5mm width, 14K Two-Tone, **\$525** | G. **123475** Diamond Stackable V Ring, 1/6 CTW, 14K White, 33, **\$845**. Mounting 123475, **\$515**. | H. **86608** Geometric Earrings, 4.9mm, 14K Yellow, **\$225 per pair** | J. **86761** Triangle Earrings, 12x3.3mm, 14K Yellow, **\$169 per pair**

K. **86730** Diamond Bar Earrings, 0.07 CTW, 16.9x1.9mm, 14K White, 33, **\$529 per pair**. Mounting 86730, **\$189 each**. | L. **86759** Geometric Bar Earrings, 9.3x2.4mm, 14K Rose, **\$225 per pair** | M. **86783** V Necklace, 21.6x15.3mm, 14K Rose, 16-18", **\$449** | N. **71968** Genuine Emerald and Diamond Ring, 6x4mm, 1/6 CTW, 14K Yellow, 33, **\$1,039**. Mounting 71968, **\$705**. Shown in box **61-1130** Timber (Gray). | P. **652435** Diamond Arrow Earrings, 1/6 CTW, 16.9x5.2mm, 14K White, 545, **\$809 per pair**

Stacked in Symmetry

The perfect balance of dazzling and distinctive styles



A. **123338** Diamond Asymmetrical Ring, 1/10 CT, 14K White, 33, **\$625**. Mounting 123338, **\$435**. | B. **123404** Diamond Geometric Ring, 0.06 CT, 14K Rose, 33, **\$539**. Mounting 123404, **\$455**. | C. **51711** Geometric Ring, 3mm width, 14K White, **\$469** | D. **51665** Geometric Ring, 6.8mm width, 14K Yellow, **\$575** | E. **51781** Negative Space Beaded V Ring, 6.5mm width, 14K Two-Tone, **\$525**

F. **71888** Genuine Amethyst Ring, 1.75mm, 14K Yellow, 43, **\$465**. Mounting 71888, **\$369**. | G. **51786** Geometric Beaded Ring, 6.8mm width, 14K Two-Tone, **\$505** | H. **71991** Diamond Ring, 1/3 CTW, 14K Yellow, 33, **\$1,059**. Mounting 71991, **\$375**. | J. **651806** Diamond V Ring, 1/6 CTW, 14K Rose, 548, **\$595** | K. **71918** Genuine Aquamarine and Diamond Bar Ring, 3mm, 0.06 CTW, 14K White, 45, 33, **\$529**. Mounting 71918, **\$375**.



123506 Diamond Ring, 1/2 CTW, 14K White, 20, 33, **\$1,189**. Mounting 123506, **\$365**.

71973 London Blue Topaz and Diamond Ring, 5x2.5mm, 1/2 CTW, 14K Yellow, 55, 33, **\$829**. Mounting 71973, **\$339**.

51742 Open Bar Ring, 4.0mm width, 14K Rose, **\$375**



123361 Diamond Graduated V Ring, 1/4 CTW, 14K Yellow, 33, **\$949**. Mounting 123361, **\$389**.

51730 Beaded V Ring, 2.2mm width, 14K Rose, **\$299**

6497 White Freshwater Cultured Pearl and Diamond Ring, 4.0-4.5mm Pearl, 1/6 CTW, 14K White, 16, 33, **\$865**. Mounting 6497, **\$425**.



123507 Diamond Two-Stone Ring, 1/4 CTW, 14K Rose, 20, **\$1,469**. Mounting 123507, **\$415**.

51807 Twisted Beaded Ring, 2.6mm width, 14K White, **\$369**

71988 Genuine Pink Tourmaline and Diamond Ring, 6x4mm, 1/6 CTW, 14K Yellow, 83, 33, **\$1,125**. Mounting 71988, **\$349**.



123530 Diamond V Ring, 1/6 CTW, 14K Rose, 25, **\$665**. Mounting 123530, **\$355**.

51763 Beaded V Ring, 2.2mm width, 14K White, **\$335**

71963 Genuine Aquamarine Asymmetrical Ring, 2.5mm, 14K Yellow, 45, **\$465**. Mounting 71963, **\$375**.



71927 Diamond Beaded Ring, 1/6 CTW, 14K Yellow, 33, **\$555**. Mounting 71927, **\$259**.

6506 White Freshwater Cultured Pearl and Diamond Ring, 4-4.5mm Pearl, 0.05 CTW, 14K Rose, 16, 33, **\$465**. Mounting 6506, **\$305**.

51779 Beaded Ring, 1.9mm width, 14K White, **\$259**

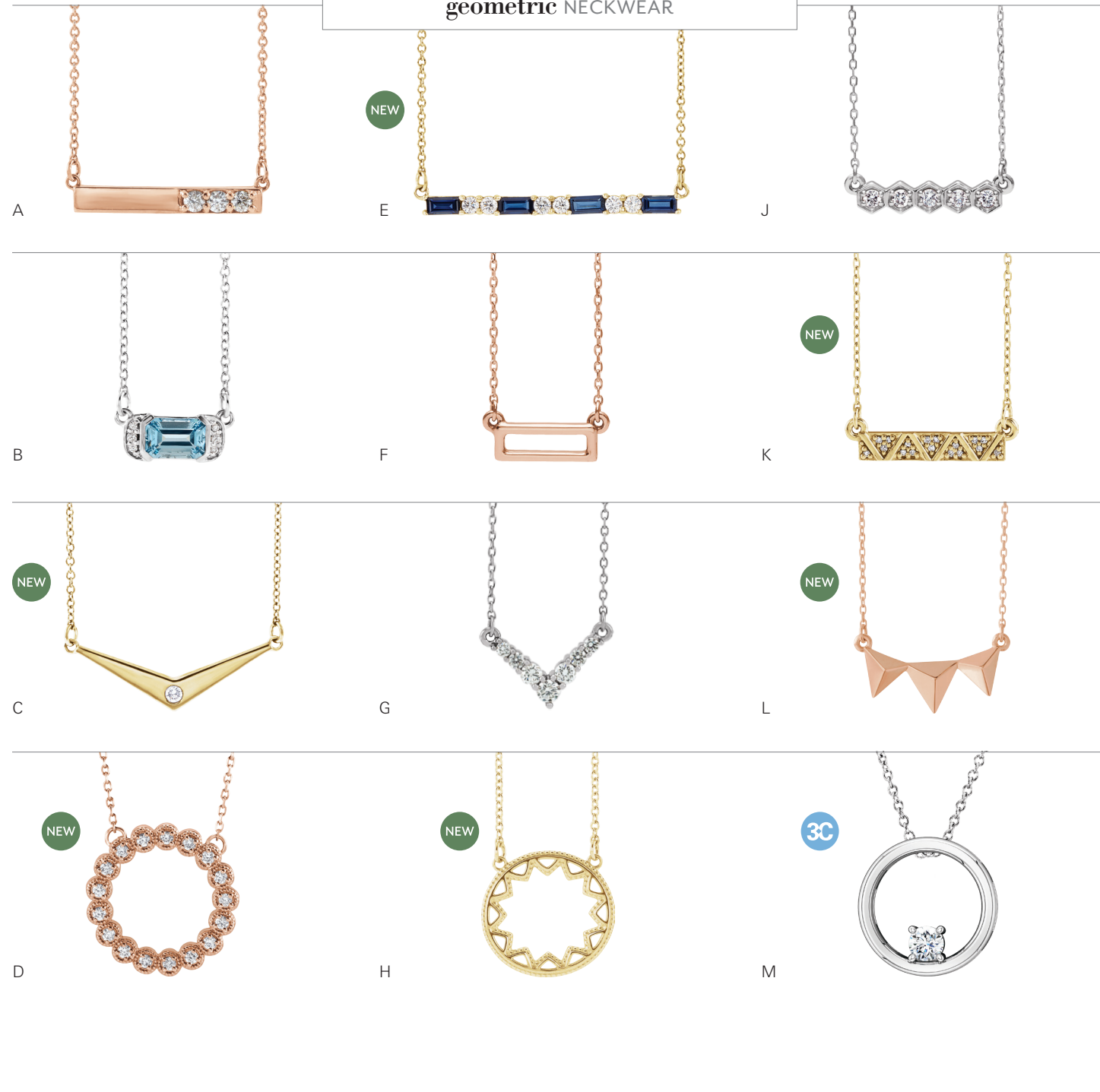


123363 Diamond Geometric Ring, 0.06 CT, 14K White, 33, **\$445**. Mounting 123363, **\$359**.

71876 Genuine Citrine Geometric Ring, 2.25mm, 14K Yellow, 48, **\$439**. Mounting 71876, **\$369**.

51783 Geometric Beaded Ring, 2mm width, 14K Rose, **\$369**

geometric NECKWEAR



A **86773** Diamond Bar Necklace, 1/5 CTW, 23.1x4.4mm, 14K Rose, 33, 16-18", **\$819**. Mounting 86773, **\$435**.

B **86750** Genuine Aquamarine and Diamond Bar Necklace, 6x4mm, 0.02 CTW, 11.6x5.5mm, 14K White, 45, 33, 16", **\$649**. Mounting 86750, **\$329**.

C **86787** Diamond V Necklace, 0.03 CT, 25.2x11.7mm, 14K Yellow, 33, 18", **\$455**. Mounting 86787, **\$399**.

D **86708** Diamond Circle Necklace, 1/4 CTW, 18mm, 14K Rose, 33, 16-18", **\$1,285**

E **86790** Genuine Blue Sapphire and Diamond Bar Necklace, 4x2mm, 1/5 CTW, 31.7x3.5mm, 14K Yellow, 67, 33, 16-18", **\$1,549**. Mounting 86790, **\$389**.

F **86617** Rectangle Bar Necklace, 14.4x5.6mm, 14K Rose, 16-18", **\$315**

G **86616** Diamond V Necklace, 1/5 CTW, 15.9x9.2mm, 14K White, 33, 16-18", **\$1,029**. Mounting 86616, **\$349**.

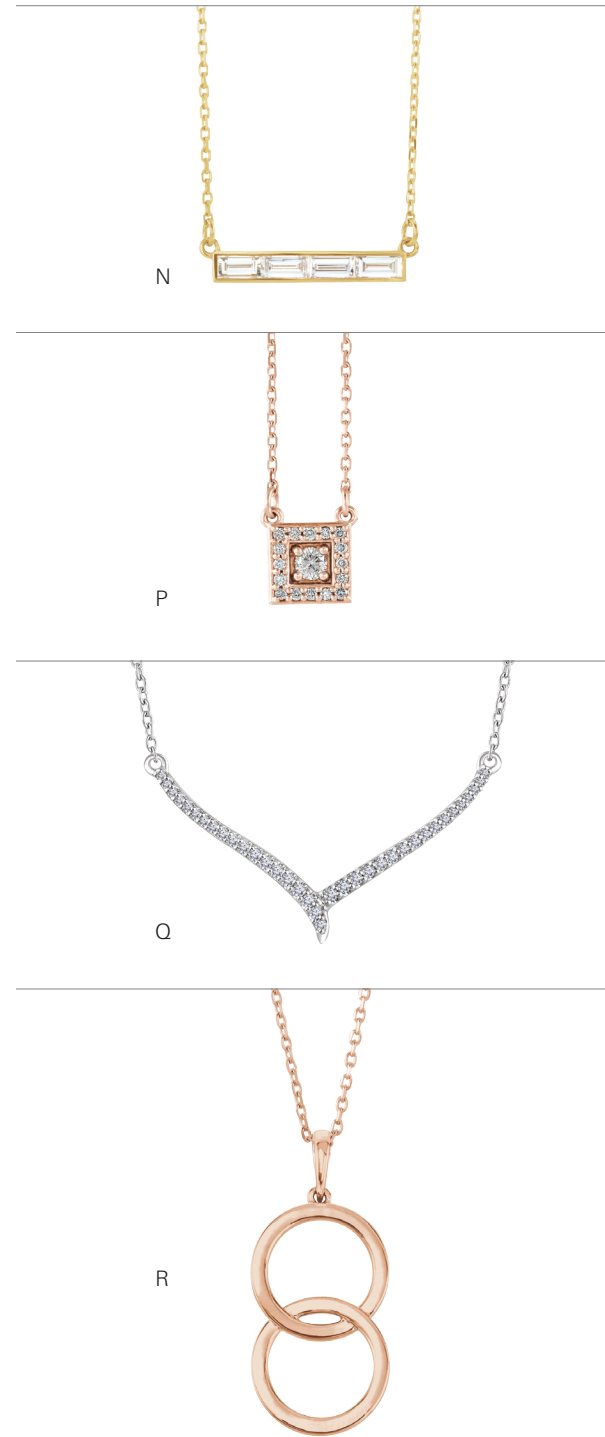
H **86764** Milgrain Sun Necklace, 15mm, 14K Yellow, 16-18", **\$445**

J **86609** Diamond Bar Necklace, 1/5 CTW, 20x3.7mm, 14K White, 33, 16-18", **\$815**. Mounting 86609, **\$375**.

K **86714** Diamond Bar Necklace, 0.05 CTW, 19.6x4.9mm, 14K Yellow, 33, 16-18", **\$539**

L **86671** Geometric Pyramid Necklace, 18.7x9.3mm, 14K Rose, 16-18", **\$399**

M **86724** Diamond Solitaire Pendant, 1/4 CT, 16.2mm, 14K White, 33, **\$1,315**. Mounting 86724, **\$455**. Shown with CH132.



N **86361** Diamond Bar Necklace, 1/2 CTW, 17x3mm, 14K Yellow, 20, 17", **\$2,765**. Mounting 86361, **\$359**.

P **86698** Diamond Halo-Style Square Necklace, 1/5 CTW, 7.7x6.8mm, 14K Rose, 33, 16-18", **\$915**. Mounting 86698, **\$519**.

Q **652780** Diamond V Necklace, 1/5 CTW, 32x17mm, 14K White, 545, 16-18", **\$885**

R **86594** Interlocking Circle Necklace, 21.8x12.2mm, 14K Rose, 16-18", **\$469**



Strikingly Simple

Layered looks for any occasion

S. **652303** Geometric Y Necklace, 14K Rose, 16-18" chain with 3.8" drop, **\$469** | T. **652305** Diamond Circle and Bar Y Necklace, 1/5 CTW, 14K White, 545, 18" chain with 3.1" drop, **\$819** | U. **652217** Graduated Diamond Bar Necklace, 1/5 CTW, 26.5x3mm, 14K White, 545, 16-18", **\$1,045** | V. **86637** Geometric Necklace, 13.3x3.3mm, 14K Rose, 16-18", **\$365** | W. **652301** Diamond Triangle Necklace, 0.05 CTW, 16x12mm, 14K Yellow, 545, 16-18", **\$509**

geometric EARRINGS AND BRACELETS



A



E



J



N



R



B



F



K



O



S



C



G



L



P



T



D



H



M



Q



U

A **86687** Diamond Domed Stud Earrings with Backs, $\frac{1}{8}$ CTW, 4.8x4.8mm, 14K White, 33, **\$475 per pair**. Mounting 86687, **\$125 each**.

B **86719** White Freshwater Cultured Pearl Earrings, 6.0-6.5mm pearl, $\frac{1}{2}$ CTW, 11.2x5.4mm, 14K Rose, 16, 33, **\$2,009 per pair**. Mounting 86719, **\$175 each**.

C **86659** Square Stud Earrings, 5.4mm, 14K Rose, **\$295 per pair**

D **651868** Bar Earrings, 8.7x1.8mm, 14K Yellow, **\$315 per pair**

E **86665** Diamond Hexagon Stud Earrings, $\frac{1}{8}$ CTW, 4.6mm, 14K Rose, 33, **\$489 per pair**. Mounting 86665, **\$135 each**.

F **86780** Genuine Chrysoprase and Diamond Earrings, 5mm, $\frac{1}{8}$ CTW, 10.8x10.2mm, 14K Yellow, 505, 33, **\$989**. Mounting 86780, **\$235 each**.

G **86756** Diamond Rectangle Earrings, $\frac{3}{4}$ CTW, 9x3.4mm, 14K White, 21, **\$3,219 per pair**. Mounting 86756, **\$165 each**.

H **651757** Diamond Bar Earrings, $\frac{1}{10}$ CTW, 8.7x1.8mm, 14K Rose, 545, **\$469 per pair**

J **86753** Leaf Stud Earrings, 7x3.7mm, 14K Yellow, **\$169 per pair**

K **86754** Diamond Leaf Stud Earrings, 0.05 CTW, 7x3.7mm, 14K Rose, 33, **\$365 per pair**. Mounting 86754, **\$119 each**.

L **86658** Triangle Stud Earrings, 6.8mm, 14K Yellow, **\$245 per pair**

M **652862** Diamond Bar Earrings, 0.05 CTW, 4.6x1.6mm, 14K White, 545, **\$339 per pair**

N **86718** White Freshwater Cultured Pearl Earrings, 7.0-7.5mm, 6.0-6.5mm pearl, 12.6x6.2mm, 14K Yellow, 16, **\$479 per pair**. Mounting 86718, **\$189 each**.

O **86497** Beaded Triangle Earrings, 12.4x9.2mm, 14K White, **\$385 per pair**

P **86685** Diamond Beaded Hoop Earrings, $\frac{3}{8}$ CTW, 12.8x2.8mm, 14K Rose, 33, **\$1,279 per pair**. Mounting 86685, **\$185 each**.

Q **86776** Diamond Hoop Earrings, 0.06 CTW, 11.5x2.6mm, 14K White, 33, **\$425 per pair**. Mounting 86776, **\$135 each**.

R **86528** White Freshwater Cultured Pearl and Diamond Earrings, 5.0-5.5mm pearl, $\frac{1}{8}$ CTW, 13.6x9mm, 14K Yellow, 16, 33, **\$1,149 per pair**. Mounting 86528, **\$299 each**.

S **652389** Arrow Earrings, 16.8x5.3mm, 14K Rose, **\$505 per pair**

T **86792** Geometric Hoop Earrings, 12.6x1.7mm, 14K Yellow, **\$469 per pair**

U **86611** Tusk Earrings, 13.1x2.9mm, 14K Rose, **\$309 per pair**



Balanced Bangles

V. **651858** Hinged Bar Bracelet, 11.7mm, 14K Yellow, 7", **\$1,355** | W. **652347** Diamond Bracelet, $\frac{3}{4}$ CTW, 11mm, 14K White, 545, 6 1/2", **\$3,379** | X. **652117** Hinged Circle Bracelet, 8mm, 14K Rose, 7", **\$1,589** | Y. **652354** Diamond Bracelet, $\frac{3}{4}$ CTW, 16mm, 14K White, 545, 6", **\$3,285** | Z. **652350** Diamond Criss-Cross Bracelet, $\frac{3}{4}$ CTW, 16.1mm, 14K Yellow, 545, 7", **\$3,345**

Evergreen Basics

Deck the halls with boughs of holly hues.



NEW



71973 Genuine Peridot and Diamond Stackable Ring, 5x2.5mm, 1/8 CTW, 14K White, 61, 33, **\$819**. Mounting 71973, **\$359**.

122932 Genuine Peridot Stackable Ring, 4x2mm, 14K Yellow, 61, **\$635**. Mounting 122932, **\$429**.

71883 Genuine Peridot and Diamond Stackable Ring, 6x4mm, 0.02 CTW, 14K Rose, 61, 33, **\$465**. Mounting 71883, **\$379**.

NEW



71982 Genuine Peridot and White Sapphire Two-Stone Ring, 5x3mm, 4.0mm, 14K Yellow, 61, 367, **\$509**. Mounting 71982, **\$459**.

71884 Genuine Peridot Two-Stone Ring, 4x2mm, 14K White, 61, **\$1,089**. Mounting 71884, **\$975**.



71886 Genuine Peridot Two-Stone Ring, 3.0mm, 14K White, 61, **\$449**. Mounting 71886, **\$359**.

71902 Genuine Peridot and Pink Tourmaline Two-Stone Ring, 5x5mm, 4.0mm, 14K Rose, 61, 83, **\$899**. Mounting 71902, **\$809**.

A. **71879** Chatham® Created Emerald and Diamond Ring, 0.02 CTW, 6x4mm, 14K Yellow, 4, 33, **\$659**. Mounting 71879, **\$465**. | B. **67682** Genuine Peridot Ring, 10x7mm, 14K White, 61, **\$439** | C. **651302** Created Emerald and Diamond Earrings, 6.0mm, 1/10 CTW, 8.1mm, 14K White, 520, 562, **\$805 per pair**. D. **71988** Chatham® Created Emerald and Diamond Ring, 6x4mm, 1/8 CTW, 14K Rose, 4, 33, **\$909**. Mounting 71988, **\$355**. | E. **86514** Genuine Emerald Disc Pendant, 3.0mm, 16.2x14.1mm, 14K Yellow, 51, **\$825**. Mounting 86514, **\$479**. Shown with CH132. | F. **86709** Genuine Peridot Pendant, 8x8mm, 14.7x10mm, 14K Yellow, 61, **\$335**. Mounting 86709, **\$285**. Shown with CH132. | G. **651204** Created Emerald Bracelet, 3.0mm, 14K White, 520, 7.25", **\$2,569**

geometric GREEN JEWELRY

BEST SELLER



NEW



71806 Genuine Peridot Ring, 4.0mm, 14K Yellow, 61, **\$519**. Mounting 71806, **\$439**

86777 Genuine Peridot and Diamond Earrings, 5.0mm, 10x9.8mm, 14K Yellow, 61, 33, **\$979 per pair**. Mounting 86777, **\$255 each**.

61134 Genuine Peridot Necklace, 4mm, 7.1x4.8mm, 14K Yellow, 61, 16", **\$385**. Mounting 61134, **\$319**.



67670 Chatham® Created Emerald and Diamond Earrings, 7x5mm, 1/8 CTW, 11.1x5.4mm, 14K Yellow, 4, 33, **\$1,099 per pair**



28810 Chatham® Created Emerald Earrings, 6.0mm, 14K White, 4, **\$939 per pair**. Mounting 28810, **\$55 each**.

NEW



86710 Genuine Genuine Emerald and Diamond Floral-Inspired Pendant, 6.0mm, 1/10 CTW, 13.5x5.7mm, 14K Yellow, 50, 26, **\$3,205**. Mounting 86710, **\$135**. Shown with CH132.

86712 Genuine Emerald and Diamond Pendant, 6.0mm, 1/8 CTW, 16.9x9.1mm, 14K White, 50, 33, **\$3,815**. Mounting 86712, **\$329**. Shown with CH132.

85903 Genuine Peridot and Diamond Necklace, 9x7mm, 0.05 CTW, 11.6x11.2mm, 14K White, 61, 33, 16.5", **\$789**. Mounting 85903, **\$415**.

3C



71863 Chatham® Created Emerald Ring, 6x4mm, 14K Yellow, 4, **\$729**. Mounting 71863, **\$379**.



BEST SELLER



70530 Chatham® Created Emerald Scroll Setting® Ring, 8.0mm, 14K White, 4, **\$1,605**. Mounting 70530, **\$519**.



71968 Genuine Peridot and Diamond Ring, 6x4mm, 1/8 CTW, 14K Yellow, 61, 33, **\$1,079**. Mounting 71968, **\$705**.

Yours Truly

Conversation starters with a personal touch



A. **86775** Diamond Engravable Earrings, ¼ CTW, 12.8mm, 14K Yellow, 33, **\$1,265 per pair**. Mounting 86775, **\$289 each**. Shown on box 41-9450 Linden (Blue).
B. **653447** Diamond Monogram Bar Necklace, 0.05 CTW, 13.5×5.5mm, 14K White, 619, 18", **\$805** | C. **652270** Diamond Engravable Necklace, ⅓ CTW, 18×14.4mm, 14K Rose, 33, 18", **\$909**. Mounting 652270, **\$529** | D. **86634** Engravable Scroll Disc Necklace, 16.6mm, 14K Yellow, 16-18", **\$915** | E. **86558** Engravable Family Necklace Mounting for Round-Shape Stones, 1- 2.0mm, 35×7mm, 14K Rose, 16-18", **\$765** | F. **51753** Engravable Bypass Ring, 11.9mm, 14K Yellow, **\$485**

H. **122976** Diamond Signet Ring, 0.03 CTW, 17.8mm width, 14K White, 33, **\$469** | J. **51803** Oval Signet Ring, 13.1×5.5mm top, 14K Rose, **\$499**
K. **653427** Diamond Script Nameplate Necklace, 0.01 CTW, 20×6.6mm, 14K Rose, 619, 18", **\$585** | L. **86597** Diamond Engravable Bar Necklace, 0.03 CT, 20×5mm, 14K White, 33, 16-18", **\$459**. Mounting 86597, **\$209** | M. **653428** Script Monogram Necklace with Brushed Finish, 30×20mm, 14K Yellow, 18", **\$955**
N. **BRC765** Engravable Bracelet, 9.7mm, 14K Rose, 6.75", **\$1,239**

Dimensions are approximate and will vary due to initial combinations. Each nameplate has an eight-character limit.

An Initial Statement

Make a great first impression with monogrammed jewelry.



A. 653426 Diamond Infinity-Inspired Script Nameplate Necklace, 0.02 CT, 30x11.4mm, 14K White, 619, 18", \$775 | B. 653429 Three-Letter Oval Monogram Necklace, 35x22mm, 14K Rose, 18", \$1,579 | C. 652582 Birthstone Three-Letter Ribbon Monogram Necklace, 1.5mm stone, 20mm, 14K Yellow, 406, 18", \$739 | D. 86134 Block Nameplate Necklace, 34x14mm, 14K White, 18", \$629 | E. 51420 Script Nameplate Ring, 7mm width, 14K Rose Gold-Plated Sterling Silver, \$225 | F. 86009 3-Letter Script Monogram Earrings, 13mm, 14K Rose, \$525 per pair

G. 86013 Three-Letter Script Monogram Necklace, 25mm, 14K Rose, 18", \$875 | H. 653424 Script Couples Nameplate Necklace, 34x14mm, 14K Yellow, 18", \$669 | J. 652592 Diamond Three-Letter Script Monogram Necklace, ¼ CTW, 23mm, 14K White, 619, 18", \$2,225 | K. 86004 Three-Letter Script Monogram Bangle Bracelet with Hook Clasp, 22mm, 14K Yellow Gold-Plated Sterling Silver, 6½", \$355. Shown in box 41-0740 Eclipse (Aubergine). | 86145 Script Nameplate Earrings, 8x5.6mm, 14K Yellow, \$509 per pair | M. 51317 Three-Letter Script Monogram Ring, 18mm, Rhodium-Plated Sterling Silver, \$225

Dimensions are approximate and will vary due to initial combinations. Each nameplate has an eight-character limit.

The Gift of Family

Stylish selections straight from the heart



A. **86248** Family Pendant Mounting for Round-Shape Stones, 2- 3.0mm, 12.4x3mm, 14K White, **\$189** Shown with CH132. | B. **86555** Family Necklace Mounting for Round-Shape Stones, 5- 2.5mm, 34.5x6.7mm, 14K Yellow, 16-18", **\$469** | C. **71975** Family Ring Mounting with Accents for Round-Shape Stones, 3- 2.5mm, 1/8 CTW, 14K Rose, **\$405**. Shown on box **41-7770** Veltex™ (Teal). | D. **86647** Family Necklace Mounting for Round-Shape Stones, 3- 2.5mm, 28x7mm, 14K Rose, 16-18", **\$385** | E. **71971** Family Ring Mounting with Accents for Round-Shape Stones, 1- 2.5mm, 23- 1.3mm, 1/4 CTW, 14K White, **\$975** | F. **71989** Family Ring Mounting with Accents for Round-Shape Stones, 3- 2.5mm, 3/8 CTW, 14K Yellow, **\$549**

family JEWELRY



2- 4x2mm, **\$429**



3- 4x2mm, **\$439**



4- 4x2mm, **\$449**

71942 Family Ring Mounting for Baguette-Shape Stones, 14K Rose. Available with 2-5 stones.

NEW

71971 Family Ring Mounting with Accents for Round-Shape Stones, 14K White. Available with 1-5 stones.



1- 2.5mm, 23- 1.3mm, **\$415**
Semi-Set, 1/8 CTW, 33, **\$975**



3- 2.5mm, 23- 1.3mm, **\$469**
Semi-Set, 1/8 CTW, 33, **\$1,035**



5- 2.5mm, 23- 1.3mm, **\$529**
Semi-Set, 1/8 CTW, 33, **\$1,089**

NEW

71975 Family Ring Mounting with Accents for Round-Shape Stones, 14K Rose. Available with 1-5 stones.



1- 2.5mm, 2- 1.3mm, **\$395**
Semi-Set, 1/8 CT, 33, **\$505**



3- 2.5mm, 4- 1.3mm, **\$405**
Semi-Set, 1/8 CTW, 33, **\$589**



4- 2.5mm, 5- 1.3mm, **\$415**
Semi-Set, 1/8 CTW, 33, **\$635**



1- 3.0mm, **\$419**



3- 3.0mm, **\$449**



5- 3.0mm, **\$479**

71864 Family Ring Mounting for Round-Shape Stones, 14K Yellow. Available with 1-6 stones.



1- 3.0mm, **\$315**



2- 3.0mm, **\$339**



3- 3.0mm, **\$345**

71311 Family Ring Mounting for Round-Shape Stones, 14K Yellow. Available with 1-3 stones.

family JEWELRY

71816 Family Ring Mounting for Round-Shape Stones, 14K White. Available with 1-6 stones.



1- 3.0mm, **\$379**

3- 3.0mm, **\$425**

5- 3.0mm, **\$445**

71675 Family Ring Mounting for Round-Shape Stones, 14K Yellow. Available with 1-6 stones.



3- 3.0mm, **\$425**

5- 2.5mm, **\$439**

6- 2.5mm, **\$445**

4691 Family Ring Mounting for Round-Shape Stones, 14K Rose. Available with 2-5 stones.



2- 2.5mm, **\$449**

3- 2.5mm, **\$475**

4- 2.5mm, **\$495**

12608 Family Ring Mounting for Round-Shape Stones, 14K White. Available with 1-5 stones.



1- 3.0mm, **\$405**

3- 3.0mm, **\$465**

5- 3.0mm, **\$475**

71817 Family Ring Mounting with Accents for Round-Shape Stones, 14K Yellow. Available with 1-6 stones.



1- 3.0mm, 22- 1.0mm, **\$429**
Semi-Set, 1/6 CTW, 33, **\$815**

3- 3.0mm, 16- 1.0mm, **\$435**
Semi-Set, 0.08 CTW, 33, **\$725**

5- 3.0mm, 10- 1.0mm, **\$439**
Semi-Set, 0.05 CTW, 33, **\$619**

family JEWELRY

71951 Family Ring Mounting for Round-Shape Stones, 14K Rose. Available with 1-5 stones.



1- 2.5mm, **\$335**

3- 2.5mm, **\$359**

5- 2.5mm, **\$385**

NEW

71960 Family Ring Mounting for Round-Shape Stones, 14K White. Available with 1-5 stones.



1- 2.0mm, **\$489**

3- 2.0mm, **\$495**

5- 2.0mm, **\$505**

71475 Family Ring Mounting with Accents for Oval-Shape Stones, 14K Yellow. Available with 1-5 stones.



1- 8x6mm, 16- 1.5mm, **\$469**
Semi-Set, 1/4 CTW, 33, **\$1,085**

3- 6x4mm, 10- 1.5mm, **\$505**
Semi-Set, 1/6 CTW, 33, **\$829**

5- 5x3mm, 6- 1.5mm, **\$525**
Semi-Set, 1/10 CTW, 33, **\$729**

71943 Family Ring Mounting with Accents for Square-Shape Stones, 14K White. Available with 1-6 stones.



2- 3x3mm, 16- 1.4mm, **\$369**
Semi-Set, 1/6 CTW, 33, **\$729**

3- 3x3mm, 14- 1.4mm, **\$379**
Semi-Set, 1/6 CTW, 33, **\$699**

5- 3x3mm, 10- 1.4mm, **\$405**
Semi-Set, 1/10 CTW, 33, **\$635**

71474 Family Ring Mounting with Accents for Cushion-Shape Stones, 14K White. Available with 1-4 stones.



1- 6x6mm, 16- 1.5mm, **\$559**
Semi-Set, 1/4 CTW, 33, **\$1,115**

2- 5x5mm, 14- 1.5mm, **\$579**
Semi-Set, 1/6 CTW, 33, **\$1,099**

3- 5x5mm, 12- 1.5mm, **\$675**
Semi-Set, 1/6 CTW, 33, **\$1,075**

family JEWELRY



1- 3.0mm, \$405



2- 3.0mm, \$435



3- 3.0mm, \$499

71910 Family Ring Mounting for Round-Shape Stones, 14K Yellow. Available with 1-4 stones.



1- 3.0mm, \$619



2- 3.0mm, \$639



3- 3.0mm, \$665

71177 Family Ring Mounting for Round-Shape Stones, 14K White. Available with 1-5 stones.



1- 3.0mm, \$535



2- 2.7mm, \$555



3- 2.7mm, \$605

12506 Family Ring Mounting for Round-Shape Stones, 14K Yellow. Available with 1-6 stones.



1- 3.0mm, 16- 1.1mm, \$695
Semi-Set, 0.08 CTW, 33, \$905



3- 3.0mm, 16- 1.1mm, \$739
Semi-Set, 0.08 CTW, 33, \$945



5- 3.0mm, 16- 1.1mm, \$779
Semi-Set, 0.08 CTW, 33, \$985

71905 Family Ring Mounting with Accents for Round-Shape Stones, 14K Yellow. Available with 1-5



1- 3.5mm, \$739



3- 3.0mm, \$745



5- 2.5mm, \$765

71709 Family Ring Mounting for Round-Shape Stones, 14K White. Available with 1-6 stones.

family JEWELRY



2- 3.0mm, 28- 1.0mm, \$999
Semi-Set, 1/8 CTW, 239, \$1,415



3- 3.0mm, 26- 1.0mm, \$1,019
Semi-Set, 1/8 CTW, 239, \$1,415



4- 2.5mm, 24- 1.0mm, \$1,025
Semi-Set, 1/8 CTW, 239, \$1,379

71711 Family Ring Mounting with Accents for Round-Shape Stones, 14K White. Available with 1-6 stones.



2- 3.0mm, 9- 1.2mm, \$1,279
Semi-Set, 0.07 CTW, 33, \$1,505



3- 3.0mm, 9- 1.2mm, \$1,295
Semi-Set, 0.07 CTW, 33, \$1,515



4- 3.0mm, 9- 1.2mm, \$1,305
Semi-Set, 0.07 CTW, 33, \$1,529

71904 Family Ring Mounting with Accents for Round-Shape Stones, 14K Yellow. Available with 1-5 stones.



1- 3.0mm, \$685



2- 3.0mm, \$695



3- 3.0mm, \$705

NEW

71962 Family Ring Mounting for Round-Shape Stones, 14K White. Available with 1-5 stones.



1- 5x3mm, \$539



3- 5x3mm, \$565



5- 5x3mm, \$569

10350 Family Ring Mounting for Oval-Shape Stones, 14K Yellow. Available with 1-6 stones.



1- 2.0mm, \$795



3- 2.0mm, \$805



5- 2.0mm, \$815

NEW

71950 Family Ring Mounting for Round-Shape Stones, 14K Yellow. Available with 1-5 stones.



Holiday Expression

Make a name for yourself with these on-trend options

A. **86327** Engravable Family Pendant Mounting for Round-Shape Stones, 1- 2.5mm, 22.9x3.5mm, 14K White, **\$279**. Shown with CH132.
 B. **86558** Engravable Family Necklace Mounting for Round-Shape Stones, 1- 2.0mm, 35x7mm, 14K Rose, 16-18", **\$795** | C. **86454** Engravable Family Necklace Mounting for Round-Shape Stones, 1- 3.0mm, 8.3x3.2mm, 14K Yellow, 18", **\$375** | D. **71622** Engravable Family Ring Mounting for Round-Shape Stones, 1- 1.7mm, 14K Yellow, **\$419** | E. **71777** Engravable Family Ring Mounting for Round-Shape Stones, 3- 3.0mm, 14K White, **\$745** | F. **71818** Engravable Family Ring Mounting for Round-Shape Stones, 1- 1.8mm, 14K Rose, **\$499**

71932 Engravable Family Ring Mounting for Round-Shape Stones, 14K Yellow. Available with 1-3 stones.



1- 3.0mm, **\$509**

2- 3.0mm, **\$1,049**

3- 3.0mm, **\$1,565**

71797 Engravable Family Ring Mounting for Round-Shape Stones, 14K White. Available with 1-5 stones.



1- 2.0mm, **\$735**

2- 2.0mm, **\$749**

3- 2.0mm, **\$809**

71092 Engravable Family Ring Mounting for Round-Shape Stones, 14K Yellow. Available with 1-4 stones.



1- 3.0mm, **\$515**

2- 3.0mm, **\$525**

3- 3.0mm, **\$919**

family JEWELRY

86092 Family Necklace Mounting for Round-Shape Stones, 40x3.9mm, 14K Rose, 17.5". Available with 1-6 stones.



2- 2.5mm, **\$495**

3- 2.5mm, **\$495**

5- 2.5mm, **\$505**

86599 Family Necklace Mounting for Round-Shape Stones, 37.8x3.7mm, 14K White, 16-18". Available with 1-5 stones.



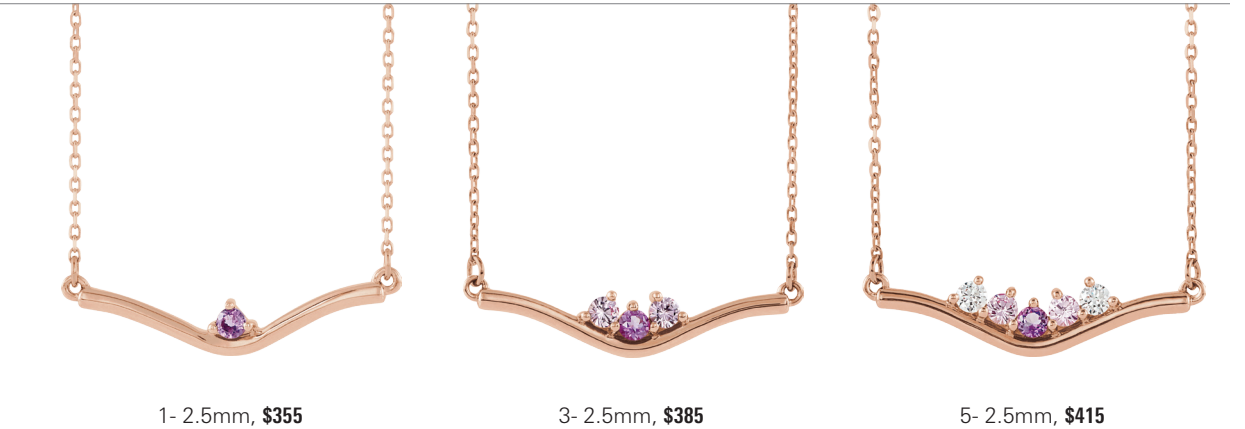
1- 2.5mm, **\$339**

2- 2.5mm, **\$359**

3- 2.5mm, **\$365**

NEW

86647 Family Necklace Mounting for Round-Shape Stones, 28x7mm, 14K Rose, 16-18". Available with 1-5 stones.



1- 2.5mm, **\$355**

3- 2.5mm, **\$385**

5- 2.5mm, **\$415**

86555 Family Necklace Mounting for Round-Shape Stones, 34.5x6.7mm, 14K Yellow, 16-18". Available with 1-5 stones.



2- 2.5mm, **\$445**

3- 2.5mm, **\$445**

4- 2.5mm, **\$455**

family JEWELRY

86271 Family Necklace Mounting for Round-Shape Stones, 37.4x9mm, 14K Rose, 16-18". Available with 1-5 stones.



1- 3.0mm, **\$365**

2- 3.0mm, **\$379**

3- 3.0mm, **\$395**

86385 Family Necklace Mounting for Round-Shape Stones, 24.4x8mm, 14K Yellow, 17". Available with 1-5 stones.



2- 2.5mm, **\$515**

3- 2.5mm, **\$529**

4- 2.5mm, **\$545**

86248 Family Pendant Mounting for Round-Shape Stones, 14K White. Available with 1-5 stones. Dimensions change with stone count. Shown with CH132.



1- 3.5mm, 9.5x3.5mm, **\$179**

2- 3.0mm, 12.4x3mm, **\$189**

3- 2.5mm, 15x2.5mm, **\$195**

86513 Family Pendant Mounting for Round-Shape Stones, 26x3.2mm, 14K Yellow. Available with 1-5 stones. Shown with CH132.



1- 3.0mm, **\$505**

2- 3.0mm, **\$515**

3- 3.0mm, **\$519**

family JEWELRY

NEW

86722 Family Necklace Mounting for Round-Shape Stones, 14K Yellow, 16-18". Available with 1-5 stones. Dimensions change with stone count. Pendant option available.



1- 3.0mm, 10.8x3.9mm, **\$305**

2- 3.0mm, 14.0x3.9mm, **\$339**

3- 3.0mm, 17.2x3.9mm, **\$375**

86614 Family Ring Mounting with Accents for Round-Shape Stones, 26x15.4mm, 14K White. Available with 1-6 stones. Shown with CH132.



2- 2.5mm, 7- 1.0mm, 14- 0.9mm, **\$389**
Semi-Set, 0.07 CTW, 33, **\$609**

3- 2.5mm, 7- 1.0mm, 14- 0.9mm, **\$399**
Semi-Set, 0.07 CTW, 33, **\$615**

4- 2.5mm, 7- 1.0mm, 14- 0.9mm, **\$405**
Semi-Set, 0.07 CTW, 33, **\$615**

NEW

86746 Family Necklace Mounting for Round-Shape Stones, 23.1x8.6mm, 14K Yellow, 16-18". Available with 1-5 stones. Pendant option available.



1- 2mm, **\$449**

2- 2mm, **\$459**

3- 2mm, **\$465**

NEW

86707 Necklace Mounting for Round-Shape Stones, 28x20.5mm, 14K Rose, 16-18". Available with 1-5 stones. Pendant option available.



1- 2.5mm, **\$675**

2- 2.5mm, **\$675**

3- 2.5mm, **\$679**

Genuine Birthstone Chart

| mm stone | JANUARY Moz. Garnet (AA) | FEBRUARY Amethyst (AA) | MARCH Aquamarine (AA) | APRIL Diamond (SI2-SI3, G-H) | MAY Emerald (AA) | JUNE Alexandrite (AA) |
|-----------------|-----------------------------|--------------------------------|---|---|----------------------------------|--------------------------------------|
| ROUND | | | | | | |
| 1.0 | \$13.05 | \$16.05 | \$33.30 | \$12.53 | \$31.35 | — |
| 1.5 | \$8.25 | \$16.05 | \$26.85 | \$33.08 | \$53.10 | — |
| 1.75 | \$8.25 | \$16.05 | \$26.85 | \$42.30 | \$53.10 | — |
| 2.0 | \$7.80 | \$9.60 | \$29.40 | \$58.95 | \$81.60 | \$121.80 |
| 2.25 | \$7.80 | \$9.60 | \$29.40 | \$81.00 | \$103.20 | \$152.25 |
| 2.5 | \$8.10 | \$9.60 | \$32.55 | \$125.10 | \$140.10 | \$243.60 |
| 2.75 | \$8.10 | \$13.05 | \$35.55 | \$190.80 | \$184.65 | \$304.50 |
| 3.0 | \$8.10 | \$13.05 | \$42.60 | \$247.50 | \$299.25 | \$507.60 |
| 3.5 | \$8.70 | \$13.95 | \$60.75 | \$416.25 | \$448.80 | \$1,137.00 |
| 4.0 | \$9.00 | \$21.00 | \$100.80 | \$885.00 | \$742.50 | — |
| OVAL | | | | | | |
| 5x3 | \$6.00 | \$14.55 | \$94.95 | \$1,049.10 | \$487.50 | — |
| 6x4 | \$9.45 | \$20.55 | \$189.00 | \$1,792.65 | \$1,648.80 | — |
| SQUARE | | | | | | |
| 2x2 | \$10.50 Princess | \$16.95 Princess | \$39.75 Princess | \$116.25 Princess | \$114.90 Princess | — |
| 2.5x2.5 | \$10.50 Princess | \$17.85 Princess | \$39.75 Princess | \$231.75 Princess | \$231.75 Princess | — |
| 3x3 | \$10.50 Princess | \$19.50 Princess | \$64.20 Princess | \$415.49 Princess | \$465.75 Princess | — |
| 3.5x3.5 | \$12.00 Princess | \$23.10 Princess | \$102.15 Princess | \$930.70 Princess | \$727.95 Princess | — |
| 4x4 | \$13.20 Princess | \$24.15 Princess | \$167.85 Princess | \$1,817.65 Princess | \$1,232.55 Princess | — |
| EMERALD | | | | | | |
| 5x3 | \$8.55 | \$21.45 | \$101.40 | \$1,824.00 | \$1,017.00 | — |
| PEAR | | | | | | |
| 5x3 | \$5.70 | \$14.40 | \$75.30 | \$729.00 | \$412.65 | — |
| 6x4 | \$10.50 | \$17.70 | \$143.70 | \$1,440.45 | \$1,392.00 | — |
| BAGUETTE | | | | | | |
| 4x2 | \$12.75 | \$15.75 | \$45.75 | \$605.66 | \$505.05 | — |
| 5x2 | \$14.10 | \$18.60 | \$82.50 | \$1,313.25 | — | — |
| | JULY Ruby (AA) | AUGUST Peridot (AA) | SEPTEMBER Blue Sapphire (AA) | OCTOBER Pink Tourmaline (AA) | NOVEMBER Citrine (AA) | DECEMBER Blue Zircon (AA) |
| ROUND | | | | | | |
| 1.0 | \$38.85 | \$15.75 | — | \$19.05 | — | — |
| 1.5 | \$38.85 | \$5.10 | \$32.55 | \$19.05 | \$6.00 | \$17.85 |
| 1.75 | \$47.25 | \$5.10 | \$41.85 | \$22.20 | \$6.00 | \$22.80 |
| 2.0 | \$45.30 | \$6.00 | \$52.05 | \$26.70 | \$8.10 | \$16.95 |
| 2.25 | \$82.50 | \$9.00 | \$69.00 | \$27.45 | \$8.10 | \$19.50 |
| 2.5 | \$95.40 | \$9.00 | \$72.75 | \$34.35 | \$8.10 | \$23.85 |
| 2.75 | \$136.95 | \$9.00 | \$96.00 | \$38.85 | \$8.10 | \$30.15 |
| 3.0 | \$240.00 | \$9.00 | \$154.05 | \$47.10 | \$8.10 | \$32.85 |
| 3.5 | \$456.00 | \$9.00 | \$296.10 | \$71.70 | \$11.70 | \$49.80 |
| 4.0 | \$1,076.25 | \$10.50 | \$504.00 | \$124.80 | \$12.30 | \$72.45 |
| OVAL | | | | | | |
| 5x3 | \$537.60 | \$9.15 | \$288.75 | \$109.35 | \$11.70 | \$54.30 |
| 6x4 | \$2,214.00 | \$14.55 | \$756.00 | \$216.30 | \$15.90 | \$104.40 |
| SQUARE | | | | | | |
| 2x2 | \$77.40 Princess | \$14.25 Princess | \$56.10 Princess | \$39.90 Princess | — | — |
| 2.5x2.5 | \$235.95 Princess | \$14.25 Princess | \$124.20 Princess | \$48.45 Princess | — | — |
| 3x3 | \$456.00 Princess | \$16.65 Step | \$234.00 Princess | \$65.70 Step | \$13.05 Step | — |
| 3.5x3.5 | \$909.15 Princess | \$16.65 Princess | \$506.85 Princess | \$105.75 Princess | \$16.35 Princess | — |
| 4x4 | \$2,592.00 Step | \$17.55 Princess | \$1,062.60 Princess | \$153.90 Princess | \$18.15 Princess | — |
| EMERALD | | | | | | |
| 5x3 | \$945.00 | \$11.40 | \$433.20 | \$143.10 | \$15.90 | \$70.20 |
| PEAR | | | | | | |
| 5x3 | \$453.60 | \$8.10 | \$252.00 | \$88.95 | \$11.70 | \$45.60 |
| 6x4 | \$1,918.80 | \$18.75 | \$648.00 | \$196.50 | \$14.25 | \$87.60 |
| BAGUETTE | | | | | | |
| 4x2 | \$428.40 | \$16.05 | \$259.20 | \$48.15 | \$10.50 | — |
| 5x2 | — | \$20.10 | \$324.00 | \$75.15 | \$12.90 | — |

View all of our diamonds and gemstones at Stuller.com.



Imitation Birthstone Chart

| mm stone | JANUARY Garnet | FEBRUARY Amethyst | MARCH Aquamarine | APRIL Diamond | MAY Emerald | JUNE Alexandrite |
|-----------------|----------------------|---------------------------|------------------------------------|------------------------------------|-----------------------------|---------------------------------|
| ROUND | | | | | | |
| 1.0 | \$5.10 | — | \$5.10 | \$5.10 | — | — |
| 1.5 | \$5.10 | \$5.10 | \$5.10 | \$5.10 | \$5.10 | \$5.10 |
| 1.75 | \$5.10 | \$5.10 | \$5.10 | \$5.10 | \$5.10 | \$5.10 |
| 2.0 | \$5.10 | \$5.10 | \$5.10 | \$5.10 | \$5.10 | \$5.10 |
| 2.25 | \$5.10 | \$5.10 | \$5.10 | \$5.10 | \$5.10 | \$5.10 |
| 2.5 | \$5.55 | \$5.55 | \$6.00 | \$5.55 | \$5.55 | \$5.55 |
| 2.75 | \$6.75 | \$6.30 | \$6.30 | \$6.30 | \$6.30 | \$7.05 |
| 3.0 | \$7.80 | \$7.20 | \$7.80 | \$7.20 | \$7.20 | \$7.20 |
| 3.5 | \$8.10 | \$8.10 | \$8.10 | \$8.10 | \$8.10 | \$9.90 |
| 4.0 | \$10.20 | \$9.30 | \$9.30 | \$9.30 | \$9.00 | \$14.10 |
| OVAL | | | | | | |
| 5x3 | \$12.75 | \$9.60 | \$9.60 | \$9.60 | \$9.60 | \$13.95 |
| 6x4 | \$15.45 | \$12.60 | \$14.10 | \$14.10 | \$12.00 | \$18.30 |
| SQUARE | | | | | | |
| 2x2 | \$7.50 Step | \$10.20 Step | \$7.50 Step | \$7.50 Step | \$6.60 Step | \$9.00 Step |
| 2.5x2.5 | \$8.55 Step | \$11.70 Step | \$8.55 Step | — | \$9.15 Step | \$9.15 Step |
| 3x3 | \$9.15 Step | \$12.30 Step | \$9.15 Step | — | \$12.00 Step | \$10.20 Step |
| 3.5x3.5 | \$10.80 Step | \$14.85 Step | \$11.10 Step | — | \$14.10 Step | \$13.05 Step |
| 4x4 | \$12.60 Step | \$16.50 Step | \$12.15 Step | — | \$17.70 Step | \$14.85 Step |
| EMERALD | | | | | | |
| 5x3 | \$16.50 | \$17.10 | \$13.35 | \$13.35 | \$8.55 | \$16.50 |
| 6x4 | \$19.50 | \$19.50 | \$16.50 | \$16.50 | \$10.80 | \$22.65 |
| PEAR | | | | | | |
| 5x3 | \$12.15 | \$12.15 | \$11.55 | \$11.55 | \$9.45 | \$14.10 |
| 6x4 | \$14.55 | \$14.55 | \$14.10 | \$14.10 | \$12.45 | \$18.30 |
| BAGUETTE | | | | | | |
| 4x2 | \$19.80 | \$19.80 | \$19.80 | \$19.80 | \$19.80 | \$19.80 |
| 5x2 | \$19.95 | \$19.95 | \$19.95 | \$19.95 | \$19.95 | \$19.95 |
| | JULY Ruby | AUGUST Peridot | SEPTEMBER Blue Sapphire | OCTOBER Pink Tourmaline | NOVEMBER Citrine | DECEMBER Blue Zircon |
| ROUND | | | | | | |
| 1.0 | \$5.10 | — | \$5.10 | — | — | — |
| 1.5 | \$5.10 | \$5.10 | \$5.10 | \$5.10 | \$5.10 | \$5.10 |
| 1.75 | \$5.10 | \$5.10 | \$5.10 | \$5.10 | \$5.10 | \$5.10 |
| 2.0 | \$5.10 | \$5.10 | \$5.10 | \$5.10 | \$6.45 | \$5.10 |
| 2.25 | \$5.10 | \$5.10 | \$5.10 | \$5.10 | \$7.05 | \$5.10 |
| 2.5 | \$5.55 | \$5.55 | \$5.55 | \$5.55 | \$7.35 | \$5.55 |
| 2.75 | \$6.30 | \$6.30 | \$6.30 | \$6.30 | \$8.85 | \$6.30 |
| 3.0 | \$7.50 | \$7.20 | \$7.20 | \$7.20 | \$9.15 | \$7.20 |
| 3.5 | \$8.10 | \$8.70 | \$8.70 | \$8.70 | \$10.80 | \$8.10 |
| 4.0 | \$9.00 | \$9.30 | \$9.30 | \$9.30 | \$14.55 | \$9.30 |
| OVAL | | | | | | |
| 5x3 | \$9.60 | \$13.50 | \$9.60 | \$9.60 | \$15.30 | \$9.60 |
| 6x4 | \$12.60 | \$12.00 | \$14.10 | \$14.10 | \$20.25 | \$14.10 |
| SQUARE | | | | | | |
| 2x2 | \$7.50 Step | \$6.60 Step | \$7.50 Step | \$7.50 Step | \$10.80 Step | \$7.50 Step |
| 2.5x2.5 | — | \$8.55 Step | — | \$8.55 Step | \$11.10 Step | \$8.55 Step |
| 3x3 | \$9.15 Step | \$9.15 Step | \$9.15 Step | \$9.15 Step | \$12.60 Step | \$9.15 Step |
| 3.5x3.5 | \$9.30 Step | \$9.30 Step | \$11.10 Step | \$11.10 Step | \$16.35 Step | \$11.10 Step |
| 4x4 | \$10.80 Step | \$9.90 Step | \$12.15 Step | \$12.15 Step | \$18.30 Step | \$12.15 Step |
| EMERALD | | | | | | |
| 5x3 | \$16.50 | \$12.90 | \$15.30 | \$16.50 | \$19.50 | \$13.35 |
| 6x4 | \$19.50 | \$14.10 | \$18.00 | \$19.50 | \$23.10 | \$16.50 |
| PEAR | | | | | | |
| 5x3 | \$10.80 | \$9.60 | \$11.55 | \$11.55 | \$18.00 | \$11.55 |
| 6x4 | \$12.60 | \$11.40 | \$14.10 | \$14.10 | \$21.60 | \$14.10 |
| BAGUETTE | | | | | | |
| 4x2 | \$19.80 | \$19.80 | \$19.80 | \$19.80 | \$19.80 | \$19.80 |
| 5x2 | \$19.95 | \$19.95 | \$19.95 | \$19.95 | \$19.95 | \$19.95 |

View all of our diamonds and gemstones at Stuller.com.



Timeless Traditions



A. 6467 White Freshwater Cultured Pearl Crown Ring, 7.5-8.0mm Pearl, 14K Rose, 39, \$545. Mounting 6467, \$479. | B. 66233 Diamond Cocktail-Style Stud Earrings, ¼ CTW, 4.8mm, 14K Yellow, 32, \$3,699 per pair. Mounting 23578, \$39 each. | C. 86625 White Freshwater Cultured Pearl and Diamond Pendant, 6.5mm Pearl, ⅓ CTW, 17.1x8.9mm, 14K Yellow, 16, 33, \$265. Mounting 86625, \$599. Shown with CH132. D. 86654 White Freshwater Cultured Pearl and Diamond Halo-Style Pendant, 6.0mm Pearl, 17.5x11.1mm, 14K White, 16, 33, \$1,039. Mounting 86654, \$475. Shown with CH123. | E. 86684 Beaded Hoop Earrings, 14.6x2.5mm, 14K Rose, \$395 per pair | F. 67501 Diamond Bracelet, 4¾ CTW, 3.2mm, 14K White, 33, 7.25", \$13,435 | G. 86744 Diamond Earring Jackets, ¼ CTW, 11.3mm ID, 14K Yellow, 33, \$1,179 per pair. Mounting 86744, \$255 each. Shown with 1608 Pearl Studs.



20120 Diamond Hoop Earrings, 14K White

| CTW | 1/5 | 1/4 |
|-------------|-------------------------|-------------------------|
| mm OD | 12 | 12 |
| I1, G-H, 33 | \$1,055 per pair | \$1,165 per pair |



67154 Diamond Hinged Hoop Earrings, 14K Yellow

| CTW | 1/10 | 1/3 |
|-------------|-----------------------|-------------------------|
| mm OD | 12.4 | 15.8 |
| I1, H+, 545 | \$689 per pair | \$1,185 per pair |



650183 Diamond Inside-Outside Earrings, 14K White

| CTW | 1/4 | 1/2 | 1 | 2 | 3 | 5 |
|-------------|-------------------------|-------------------------|-------------------------|-------------------------|-------------------------|--------------------------|
| mm OD | 14.4 | 18.9 | 26.6 | 29.3 | 34.6 | 41.5 |
| I1, H+, 545 | \$1,099 per pair | \$1,629 per pair | \$2,889 per pair | \$4,479 per pair | \$6,889 per pair | \$11,105 per pair |



classics DIAMOND EARRINGS



Diamond Cocktail-Style Stud Earrings, 14K White

| CTW | 1/5 | 1/4 | 1/3 | 1/2 | 3/4 | 1 |
|-------------------------|-----------------------|-----------------------|-----------------------|-------------------------|-------------------------|-------------------------|
| 66233, SI2-SI3, G-H, 32 | \$545 per pair | \$599 per pair | \$855 per pair | \$1,739 per pair | \$3,679 per pair | \$6,499 per pair |
| 66229, I1, G-H, 33 | \$489 per pair | \$575 per pair | \$789 per pair | \$1,439 per pair | \$2,895 per pair | \$5,319 per pair |



Diamond Basket-Style Stud Earrings, 14K White

| CTW | 1/5 | 1/4 | 1/3 | 1/2 | 3/4 | 1 |
|------------------------|-----------------------|-----------------------|-----------------------|-------------------------|-------------------------|-------------------------|
| 1874, SI2-SI3, G-H, 32 | \$559 per pair | \$615 per pair | \$869 per pair | \$1,749 per pair | \$3,689 per pair | \$6,509 per pair |
| 67534, I1, G-H, 33 | \$519 per pair | \$599 per pair | \$815 per pair | \$1,465 per pair | \$2,985 per pair | \$5,359 per pair |



652481 Lab-Grown Diamond Cocktail-Style Stud Earrings, 14K Yellow

| CTW | 1/3 | 1/2 | 3/4 | 1 | 1 1/2 | 2 |
|-----------------|-----------------------|-------------------------|-------------------------|-------------------------|-------------------------|--------------------------|
| VS-SI, GHI, 618 | \$635 per pair | \$1,139 per pair | \$1,879 per pair | \$3,665 per pair | \$6,789 per pair | \$15,199 per pair |



652480 Lab-Grown Diamond Basket-Style Stud Earrings, 14K White

| CTW | 1/3 | 1/2 | 3/4 | 1 | 1 1/2 | 2 |
|-----------------|-----------------------|-------------------------|-------------------------|-------------------------|-------------------------|--------------------------|
| VS-SI, GHI, 618 | \$645 per pair | \$1,145 per pair | \$1,889 per pair | \$3,669 per pair | \$6,789 per pair | \$15,199 per pair |

67412 Diamond Bracelet, 3¾ CTW, 3.4mm, 14K White, 33, 7½", \$7,895. Mounting BRC440, \$2,025.



60872 Diamond Bracelet, 4¾ CTW, 3mm, 14K Yellow, 33, 7½", \$11,295. Mounting BRC12, \$2,005.



classics BRACELETS AND EARRINGS



A



B



C



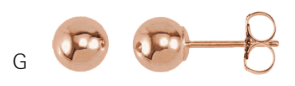
D



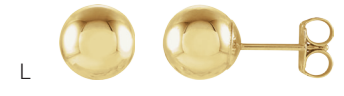
E



F



G



L



H



M



J



K



N

- A **BRC1** Half-Round Bangle Bracelet, 2mm, 14K White, 7.6", **\$675**
- B **BRC761** Beaded Bangle Bracelet, 3.8mm, 14K Rose, 7.75", **\$1,309**
- C **652763** Twisted Rope and Beaded Cuff Bracelet, 7.5mm, 14K Two-Tone, 7", **\$1,305**
- D **BRC760** Rope Cuff Bracelet, 5.8mm, 14K Yellow, 7", **\$1,175**
- E **86697** Rope Hoop Earrings, 12.6x2.8mm, 14K Yellow, **\$545 per pair**

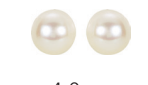
- F **86650** Vintage-Inspired Hoop Earrings, 11.7x2.6mm, 14K Two-Tone, **\$725 per pair**
- G **20865** Ball Stud Earrings with Bright Finish, 5mm, 14K Rose, **\$59 per pair**
- H **20270** Hoop Earrings, 13x2mm, 14K Rose, **\$119 per pair**
- J **20827** Hoop Earrings, 30x4mm, 14K Yellow, **\$529 per pair**
- K **86731** Vintage-Inspired Hoop Earrings, 19x1.8mm, 14K Rose, **\$775 per pair**

- L **67841** Ball Stud Earrings with Bright Finish, 7mm, 14K Yellow, **\$79 per pair**
- M **20826** Hoop Earrings, 20x3mm, 14K White, **\$265 per pair**
- N **86450** Rope Hoop Earrings, 17x3.6mm, 14K Yellow, **\$445 per pair**

classics PEARL EARRINGS AND RINGS



61103 White Akoya Cultured Pearl Earrings, 14K White, 528. Mounting 1605, **\$15 each.**



4.0mm **\$85 per pair**



5.0mm **\$119 per pair**



6.0mm **\$159 per pair**



7.0mm **\$239 per pair**



8.0mm **\$479 per pair**



1608 White Freshwater Cultured Pearl Earrings, 14K White, 16. Mounting 1608, **\$15 each.**



5.0-5.5mm **\$69 per pair**



6.0-6.5mm **\$85 per pair**



7.0-7.5mm **\$115 per pair**



86719 White Freshwater Cultured Pearl Earrings, 6.0-6.5mm pearl, 1/2 CTW, 11.2x5.4mm, 14K Rose, 16, 33, **\$2,009 per pair.** Mounting 86719, **\$175 each.**



P



R



T



Q



S



U

- P **6494** White Freshwater Cultured Pearl Crescent Ring, 4.0-4.5mm pearl, 14K Yellow, 16, **\$325.** Mounting 6494, **\$269.**
- Q **6488** White Freshwater Cultured Pearl Two-Stone Ring, 7.5-8.0, 6.0-6.5mm pearl, 14K White, 16, **\$405.** Mounting 6488, **\$369.**

- R **6511** White Freshwater Cultured Pearl and Diamond Ring, 6-6.5mm pearl, 1/3 CTW, 14K Rose, 16, 33, **\$1,389.** Mounting 6511, **\$585.**
- S **6509** White Freshwater Cultured Pearl Two-Stone Ring, 4-4.5mm pearl, 14K Yellow, 16, **\$509.** Mounting 6509, **\$465.**

- T **6489** White Freshwater Cultured Pearl and Diamond Ring, 7.5-8.0mm pearl, 1/3 CTW, 14K White, 16, 33, **\$1,079.** Mounting 6489, **\$675.**
- U **6510** White Freshwater Cultured Pearl Two-Stone Ring, 4.5-5mm pearl, 1/6 CTW, 14K Rose, 16, 33, **\$815.** Mounting 6510, **\$359.**



Chained Melody

A range of lengths in
perfect harmony

A. **68577** Diamond 3-Station Necklace, 1/3 CTW, 14K Yellow, 545, 18", **\$919** | B. **68577** Diamond 5-Station Necklace, 3/4 CTW, 14K White, 545, 18", **\$2,775** | C. **CH1034** Hollow Bead Chain with Lobster Clasp, 1.8mm, 14K Rose, 24", **\$1,019** | D. **CH492** Figaro Chain with Spring Ring, 1.25mm, 14K Yellow, 20", **\$269**
 E. **CH989** Diamond-Cut Rope Chain with Lobster Clasp, 2.4mm, 14K White, 18", **\$1,325** | F. **CH1069** Box Chain with Spring Ring, 1.2mm, 14K White, 20", **\$729** | G. **CH439** Rolo Chain with Spring Ring, 1.5mm, 14K Rose, 20", **\$445** | H. **CH228** Beaded Curb Chain with Spring Ring, 1mm, 14K Yellow, 16", **\$439**

J. **CH227** Diamond-Cut Bead Chain with Spring Ring, 1mm, 14K Yellow, 18", **\$255** | K. **CH163** Square Diamond-Cut Snake Chain with Lobster Clasp, 1mm, 14K White, 18", **\$725** | L. **CH1062** Knurled Figaro Chain with Lobster Clasp, 1.6mm, 14K Rose, 18", **\$329** | M. **CH1023** Raso Chain with Lobster Clasp, 1mm, 14K White, 24", **\$459** | N. **CH204** Alternating Diamond-Cut Bead Chain with Spring Ring, 1.25mm, 14K Yellow, 16", **\$319**
 P. **CH500** Singapore Chain with Spring Ring, 1mm, 14K Yellow, 24", **\$229** | O. **CH765** Diamond-Cut Singapore Chain with Spring Ring, 1.75mm, 14K White, 20", **\$495** | R. **68577** Diamond 7-Station Necklace, 1/3 CTW, 14K Rose, 545, 24", **\$1,349** | S. **CH520** Hollow Popcorn Chain with Lobster Clasp, 1.5mm, 14K White, 18", **\$539**

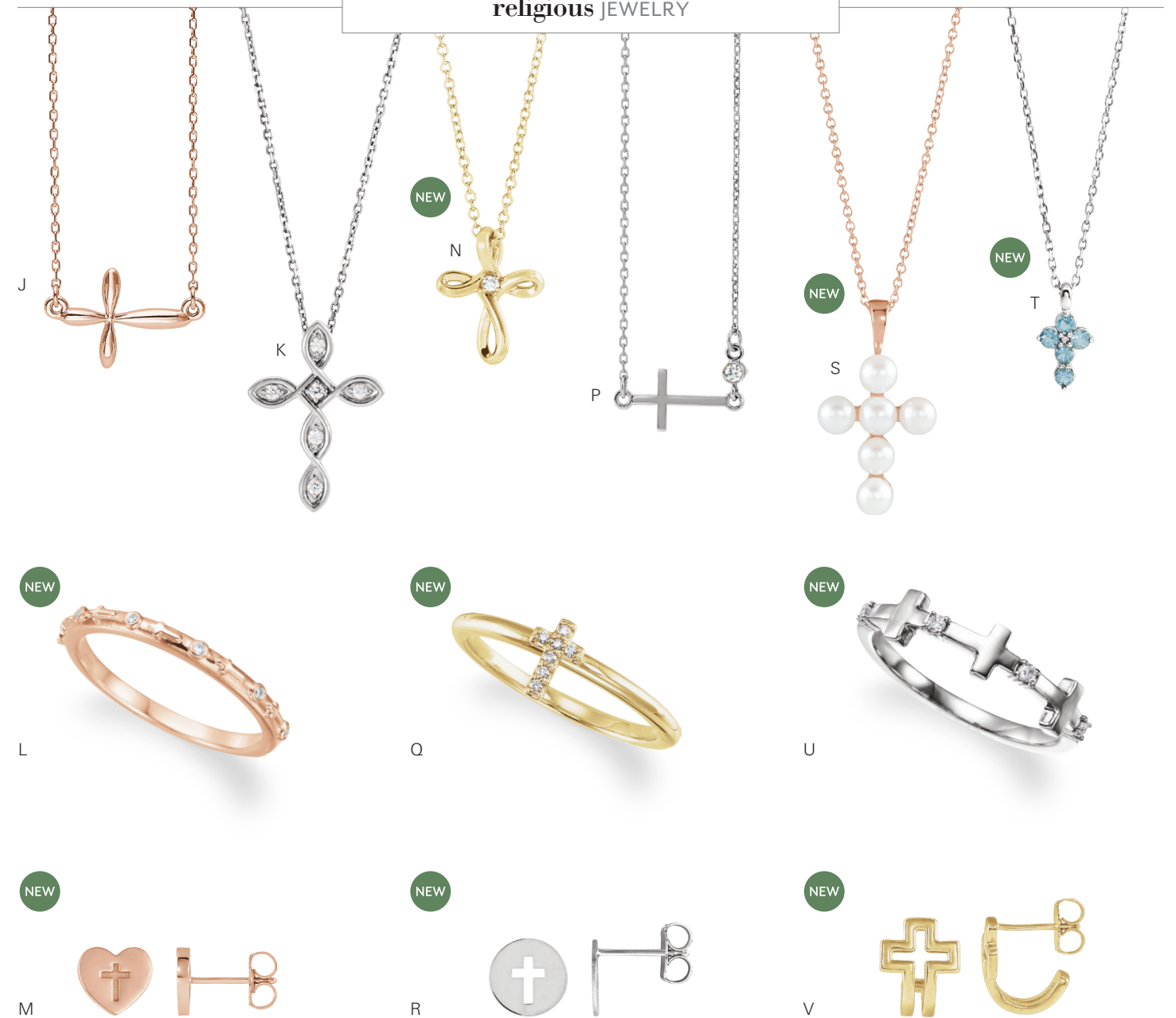
Peace on Earth

Dazzling and divine creations

Share With Us
Visit [Instagram.com/Stullerinc](https://www.instagram.com/Stullerinc)
#HowlStuller

A. **R42360** Diamond Cross Necklace, 1/4 CTW, 14x10mm, 14K Rose, 33, 16-18", **\$699**. Mounting R42360, **\$135**. | B. **R43069** Genuine Ruby Sideways Cross Ring, 2.5mm, 14K White, 66, **\$629**. Mounting R43069, **\$529**. Shown on box 41-9450 Linden (Burgundy). | C. **R42356** Diamond Sideways Cross Necklace, 1/10 CT, 20.8x11.4mm, 14K White, 33, 16-18", **\$635**. Mounting R42356, **\$379**. | D. **R45397** Petite Cross Necklace, 12x8.7mm, 14K Yellow, 16-18", **\$419** | E. **86668** Diamond Off-Center Sideways Cross Necklace, 0.04 CTW, 14.8x7.5mm, 14K Yellow, 33, 16", **\$445**. Mounting 86668, **\$259**. | F. **R17013** Diamond Cross Earrings, 0.06 CTW, 7.6x5.7mm, 14K White, 33, **\$359 per pair**. Mounting R17013, **\$105 each**. | G. **R17018** Vintage-Inspired Cross Earrings, 11.7x9.5mm, 14K Rose, **\$755 per pair** | H. **R48077** Diamond Sideways Cross Bracelet, 0.025 CT, 19.3mm, 14K Yellow, 33, 7-8", **\$405**. Mounting R48077, **\$365**.

religious JEWELRY



J **86620** Sideways Cross Necklace, 17.2x10.8mm, 14K Rose, 16-18", **\$329**

K **R42358** Diamond Cross Pendant, 1/10 CTW, 19.8x14.3mm, 14K White, 33, **\$449**. Mounting R42358, **\$255**. Shown with CH11.

L **R43075** Diamond Cross Ring, 0.03 CTW, 14K Rose, 33, **\$505**. Mounting R43075, **\$379**.

M **R17017** Heart Cross Earrings, 7.6x7.5mm, 14K Rose, **\$275 per pair**

N **R42365** Diamond Cross Necklace, 0.02 CT, 13.3x10.4mm, 14K Yellow, 33, 16-18", **\$399**. Mounting R42365, **\$139**.

P **R42355** Diamond-Accented Sideways Cross Necklace, 0.03 CT, 14.2x6.7mm, 14K White, 33, 16-18", **\$405**. Mounting R42355, **\$309**.

Q **R43084** Diamond Stackable Cross Ring, 0.03 CTW, 14K Yellow, 33, **\$439**. Mounting R43084, **\$345**.

R **R17016** Pierced Cross Earrings, 7.9mm, 14K White, **\$159 per pair**

S **R42366** White Freshwater Cultured Pearl Cross Necklace, 4.0-4.5mm pearl, 22.9x12.4mm, 14K Rose, 16, 16-18", **\$459**. Mounting R42366, **\$189**.

T **R42363** Genuine Aquamarine Cross Necklace, 2mm, 11.5x6.1mm, 14K White, 45, 16-18", **\$455**. Mounting R42363, **\$125**.

U **R43070** Diamond Cross Ring, 0.06 CTW, 14K White, 33, **\$505**. Mounting R43070, **\$415**.

V **86669** Open Cross J-Hoop Earrings, 10.8x9.3mm, 14K Yellow, **\$435 per pair**

Will You Merry Me?

Say yes this holiday season to timeless classics and on-trend favorites.



'Tis the Season for Sparkle
 Pair with Red Box Diamonds®
 for the perfect proposal.
 Learn more at Stuller.com/Redbox.

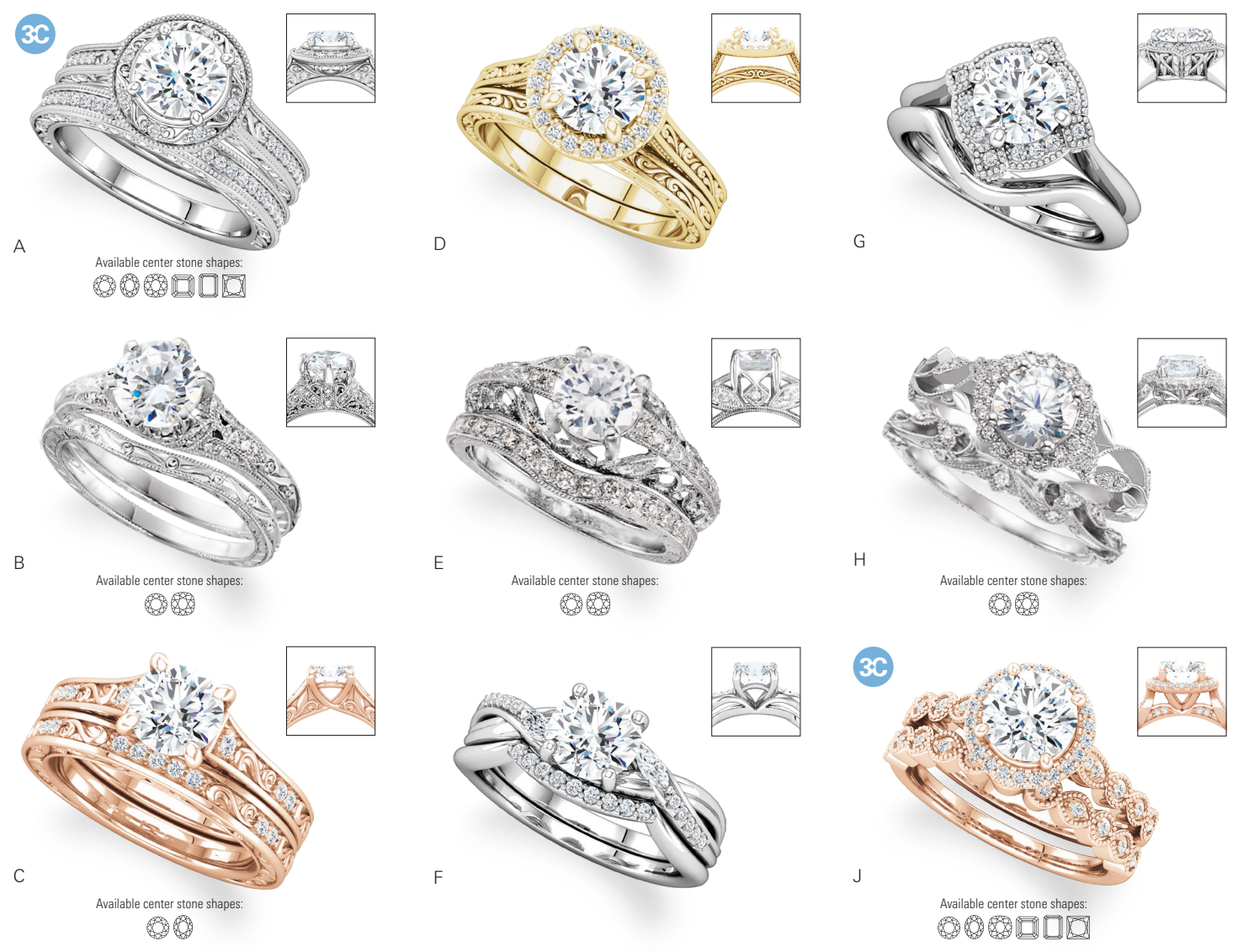
A. **123491** Diamond Anniversary Band, ¼ CTW, 14K Yellow, 32, size 7, **\$919**. Mounting 123491, **\$365**. | B. **123554** Round-Shape Halo-Style Semi-Set Engagement Ring, 1 CT Center (6.5mm), ⅜ CTW, 14K Yellow, 32, size 7, **\$1,619**. Mounting 123554, **\$395**. | C. **123325** Diamond Anniversary Band, ½ CTW, 2mm, 14K Rose, 32, size 7, **\$1,145**. Mounting 123325, **\$369**. | D. **123459** Diamond Anniversary Band, 0.05 CTW, 14K Yellow, 32, size 7, **\$515**. Mounting 123459, **\$375**. | E. **123511** Round-Shape Diamond-Accented Semi-Set Engagement Ring, 1 CT Center (6.5mm), 0.03 CTW, 14K Two-Tone, 32, size 7, **\$635**. Mounting 123511, **\$549**. | F. **123492** Diamond Anniversary Band, ¼ CTW, 14K Rose, 32, size 7, **\$919**. Mounting 123492, **\$369**.

bridal ENGAGEMENT RINGS



- G **123496** Round-Shape Halo-Style Semi-Set Engagement Ring, 1 CT Center (6.5mm), ⅜ CTW, 14K Rose, 32, size 7, **\$1,655**. Mounting 123496, **\$369**.
123041 Matching Diamond Band, ½ CTW, 14K Rose, 32, size 7, **\$1,609**. Mounting 123041, **\$435**.
- H **123375** Round-Shape Floral-Inspired Halo-Style Semi-Set Engagement Ring, 1 CT Center (6.5mm), ⅓ CTW, 14K White, 32, size 7, **\$749**. Mounting 123375, **\$475**.
123375 Matching Band, 14K White, size 7, **\$299**.
- J **123468** Oval-Shape Diamond-Accented Semi-Set Engagement Ring, 1 CT Center (8x6mm), ½ CTW, 14K White, 32, size 7, **\$1,819**. Mounting 123468, **\$449**.
123469 Matching Diamond Band, ½ CTW, 14K White, 32, size 7, **\$1,765**. Mounting 123469, **\$409**.
- K **123555** Round-Shape Vintage-Inspired Semi-Set Engagement Ring, 1 CT Center (6.5mm), 0.025 CTW, 14K White, 32, size 7, **\$479**. Mounting 123555, **\$439**.
123555 Matching Band, 14K White, size 7, **\$289**.
- L **123411** Round-Shape Floral-Inspired Halo-Style Semi-Set Engagement Ring, 1 CT Center (6.5mm), ⅜ CTW, 14K Rose, 32, size 7, **\$1,645**. Mounting 123411, **\$509**.
123411 Matching Diamond Band, ⅓ CTW, 14K Rose, 32, size 7, **\$729**. Mounting 123411, **\$429**.
- M **123541** Oval-Shape Halo-Style Semi-Set Engagement Ring, 1 CT Center (8x6mm), ⅞ CTW, 14K White, 32, size 7, **\$2,809**. Mounting 123541, **\$709**.
123542 Matching Diamond Band, ½ CTW, 14K White, 32, size 7, **\$1,499**. Mounting 123542, **\$459**.
- N **123494** Round-Shape Halo-Style Semi-Set Engagement Ring, 1 CT Center (6.5mm), ¼ CTW, 14K Yellow, 32, size 7, **\$1,295**. Mounting 123494, **\$549**.
123494 Matching Diamond Band, ⅓ CTW, 14K Yellow, 32, size 7, **\$1,055**. Mounting 123494, **\$345**.
- P **123505** Round-Shape Floral-Inspired Halo-Style Semi-Set Engagement Ring, 1 CT Center (6.5mm), ⅓ CTW, 14K White, 32, size 7, **\$899**. Mounting 123505, **\$499**.
123505 Matching Diamond Band, 0.05 CTW, 14K White, 32, size 7, **\$525**. Mounting 123505, **\$389**.
- Q **123539** Oval-Shape Diamond-Accented Semi-Set Engagement Ring, 1 CT Center (8x6mm), ⅝ CTW, 14K White, 32, size 7, **\$2,435**. Mounting 123539, **\$699**.
123540 Matching Diamond Band, ⅝ CTW, 14K White, 32, size 7, **\$2,089**. Mounting 123540, **\$559**.

bridal VINTAGE-INSPIRED ENGAGEMENT RINGS



A 123038 Round-Shape Halo-Style Semi-Set Engagement Ring, 1 CT Center (6.5mm), 1/6 CTW, 14K White, 32, size 7, **\$1,529**. Mounting 123038, **\$845**.
123040 Matching Diamond Band, 1/3 CTW, 14K White, 32, size 7, **\$1,669**. Mounting 123040, **\$635**.

B 69803 Round-Shape Diamond-Accented Semi-Set Engagement Ring, 1 CT Center (6.5mm), 1/6 CTW, 14K White, 32, size 6, **\$2,245**. Mounting 69803, **\$1,499**.
69803 Matching Band, 14K White, size 6, **\$1,215**

C 123321 Round-Shape Diamond-Accented Semi-Set Engagement Ring, 1 CT Center (6.5mm), 0.06 CTW, 14K Rose, 32, size 7, **\$825**. Mounting 123321, **\$735**.
123321 Matching Diamond Band, 0.07 CTW, 14K Rose, 32, size 7, **\$909**. Mounting 123321, **\$675**.

D 123399 Round-Shape Vintage-Inspired Halo-Style Semi-Set Engagement, 1 CT Center (6.5mm), 1/10 CTW, 14K Yellow, 32, size 7, **\$869**. Mounting 123399, **\$565**.
123399 Vintage-Inspired Matching Band, 14K Yellow, size 7, **\$395**

E 651860 Round-Shape Diamond-Accented Semi-Set Engagement Ring, 1 CT Center (6.5mm), 1/10 CTW, 14K White, 109, size 6, **\$1,479**
651860 Matching Diamond Band, 0.03 CTW, 14K White, 109, size 6, **\$1,279**

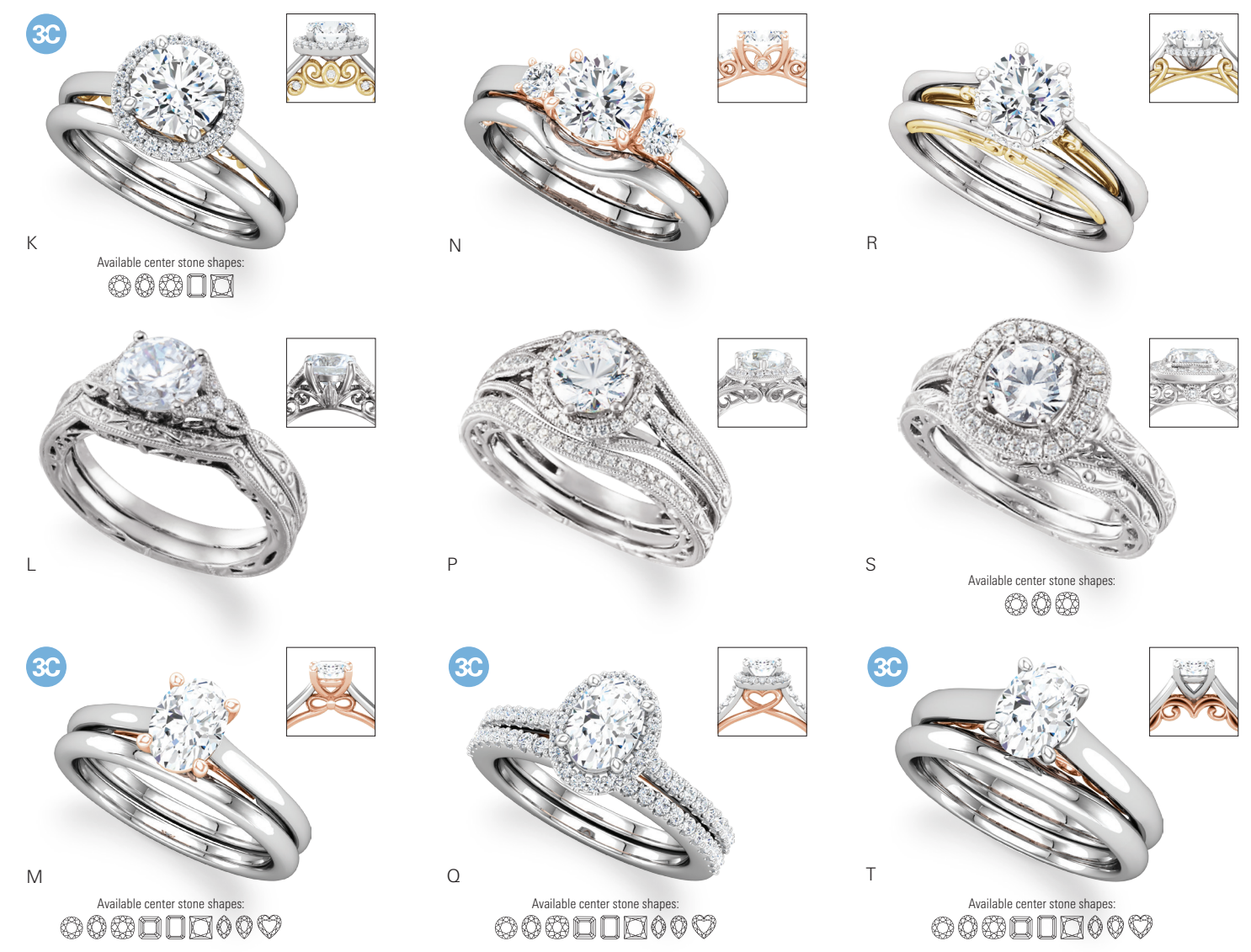
F 123407 Round-Shape Diamond-Accented Semi-Set Engagement Ring, 1 CT Center (6.5mm), 1/6 CTW, 14K White, 32, size 7, **\$999**. Mounting 123407, **\$659**.
123407 Matching Diamond Band, 0.07 CTW, 14K White, 32, size 7, **\$525**. Mounting 123407, **\$365**.

G 123236 Round-Shape Halo-Style Semi-Set Engagement Ring, 1 CT Center (6.5mm), 1/6 CTW, 14K White, 32, size 7, **\$1,019**. Mounting 123236, **\$585**.
123236 Matching Band, 14K White, size 7, **\$325**

H 652430 Round-Shape Halo-Style Semi-Set Engagement Ring, 1 CT Center (6.5mm), 1/6 CTW, 14K White, 544, size 6, **\$2,045**
652430 Matching Diamond Band, 0.05 CTW, 14K White, 544, size 6, **\$1,355**

J 123385 Round-Shape Halo-Style Semi-Set Engagement Ring, 1 CT Center (6.5mm), 1/6 CTW, 14K Rose, 32, size 7, **\$1,305**. Mounting 123385, **\$545**.
123386 Matching Diamond Band, 0.06 CTW, 14K Rose, 32, size 7, **\$639**. Mounting 123386, **\$425**.

bridal DETAILED GALLERY ENGAGEMENT RINGS



K 123335 Round-Shape Halo-Style Semi-Set Engagement Ring, 1 CT Center (6.5mm), 1/6 CTW, 14K Two-Tone, 32, size 7, **\$1,165**. Mounting 123335, **\$569**.
51746 Matching Band, 14K White, size 7, **\$409**

L 652427 Round-Shape Diamond-Accented Semi-Set Engagement Ring, 1 CT Center (6.5mm), 0.06 CTW, 14K White, 32, size 6, **\$1,685**
652427 Matching Band, 14K White, size 6, **\$1,265**

M 123453 Oval-Shape Solitaire Engagement Ring, 3/4 CT Center (7x5mm), 14K Two-Tone, size 7, **\$485**
51797 Matching Band, 14K White, size 7, **\$409**

N 123398 Round-Shape Three-Stone Semi-Set Engagement Ring, 1 CT Center (6.5mm), 1/4 CTW, 14K Two-Tone, 32, size 7, **\$1,329**. Mounting 123398, **\$645**.
123398 Matching Diamond Band, 0.005 CTW, 14K Two-Tone, 32, size 7, **\$489**. Mounting 123398, **\$449**.

P 651863 Round-Shape Halo-Style Semi-Set Engagement Ring, 1 CT Center (6.5mm), 1/6 CTW, 14K White, 32, size 6, **\$1,949**
651863 Matching Diamond Band, 1/6 CTW, 14K White, 32, size 6, **\$1,459**

Q 123348 Round-Shape Halo-Style Semi-Set Engagement Ring, 3/4 CT Center (7x5mm), 1/6 CTW, 14K Two-Tone, 32, size 7, **\$1,559**. Mounting 123348, **\$515**.
123349 Matching Diamond Band, 1/4 CTW, 14K White, 32, size 7, **\$1,195**. Mounting 123349, **\$435**.

R 123488 Round-Shape Diamond-Accented Semi-Set Engagement Ring, 1 CT Center (6.5mm), 0.05 CTW, 14K Two-Tone, 32, size 7, **\$895**. Mounting 123488, **\$605**.
123488 Matching Band, 14K Two-Tone, size 7, **\$459**

S 651859 Round-Shape Halo-Style Semi-Set Engagement Ring, 1 CT Center (6.5mm), 1/6 CTW, 14K White, 32, size 6, **\$2,379**
651859 Matching Band, 14K White, size 6, **\$1,129**

T 122903 Oval-Shape Solitaire Engagement Ring, 3/4 CT Center (7x5mm), 14K Two-Tone, size 7, **\$615**
51599 Matching Band, 14K White, size 7, **\$469**

A Dazzling Delivery
 To order in-stock diamonds available for next-day delivery, call a diamond specialist at 800-877-7777, ext. 540.



3C
A Available center stone shapes:
○◊◻◻◻◻◻◻◻◻◻◻



3C
D Available center stone shapes:
○◊◻◻◻◻◻◻◻◻◻◻



3C
G Available center stone shapes:
○◊◻◻◻◻◻◻◻◻◻◻



3C
B Available center stone shapes:
○◊◻◻◻◻◻◻◻◻◻◻



3C
E Available center stone shapes:
○◊◻◻◻◻◻◻◻◻◻◻



3C
H Available center stone shapes:
○◊◻◻◻◻◻◻◻◻◻◻



3C
C Available center stone shapes:
○◊◻◻◻◻◻◻◻◻◻◻



3C
F Available center stone shapes:
○◊◻◻◻◻◻◻◻◻◻◻



3C
J Available center stone shapes:
○◊◻◻◻◻◻◻◻◻◻◻

A 123213 Round-Shape Solitaire Engagement Ring, 1 CT Center (6.5mm), 14K Yellow, size 7, **\$509**

51725 Matching Band, 14K Yellow, size 7, **\$435**

B 122790 Oval-Shape Diamond-Accented Semi-Set Engagement Ring, ¾ CT Center (7x5mm), ½ CTW, 14K White, 32, size 7, **\$1,055**. Mounting 122790, **\$409**.

122814 Matching Diamond Band, ¼ CTW, 14K White, 32, size 7, **\$1,069**. Mounting 122814, **\$345**.

C 122804 Oval-Shape Halo-Style Semi-Set Engagement Ring, ¾ CT Center (7x5mm), ¾ CTW, 14K White, 32, size 7, **\$2,635**. Mounting 122804, **\$639**.

122805 Matching Diamond Band, ½ CTW, 14K White, 32, size 7, **\$1,959**. Mounting 122805, **\$505**.

D 122089 Round-Shape Solitaire Engagement Ring, 1 CT Center (6.5mm), 14K White, size 7, **\$519**

51220 Matching Band, 14K White, size 7, **\$409**

E 122996 Oval-Shape Diamond-Accented Semi-Set Engagement Ring, ¾ CT Center (7x5mm), ½ CTW, 14K Rose, 32, size 7 **\$1,595**. Mounting 122996, **\$335**.

123041 Matching Diamond Band, ½ CTW 14K Rose, 32, size 7, **\$1,789**. Mounting 123041, **\$435**.

F 123336 Oval-Shape Halo-Style Semi-Set Engagement Ring, ¾ CT Center (7x5mm), ¼ CTW, 14K White, 32, size 7, **\$645**

51747 Matching Band, 14K White, size 7, **\$495**

G 122047 Round-Shape Solitaire Engagement Ring, 1 CT Center (6.5mm), 14K Yellow, size 7, **\$469**

51249 Matching Band, 14K Yellow, size 7, **\$315**

H 123011 Oval-Shape Diamond-Accented Semi-Set Engagement Ring, ¾ CT Center (7x5mm), 0.05 CTW, 14K White, 32, size 7, **\$555**. Mounting 123011, **\$429**.

123011 Matching Diamond Band, 0.05 CTW, 14K White, 32, size 7, **\$545**. Mounting 123011, **\$329**.

J 123243 Oval-Shape Halo-Style Semi-Set Engagement Ring, ¾ CT Center (7x5mm), ¾ CTW, 14K White, 32, size 7, **\$1,735**. Mounting 123243, **\$539**.

123248 Matching Diamond Band, ½ CTW, 14K White, 32, size 7, **\$1,205**. Mounting 123248, **\$409**.



3C
K Available center stone shapes:
○◊◻◻◻◻◻◻◻◻◻◻



3C
N Available center stone shapes:
○◊◻◻◻◻◻◻◻◻◻◻



3C
R Available center stone shapes:
○◊◻◻◻◻◻◻◻◻◻◻



3C
L Available center stone shapes:
○◊◻◻◻◻◻◻◻◻◻◻



3C
P Available center stone shapes:
○◊◻◻◻◻◻◻◻◻◻◻



3C
S Available center stone shapes:
○◊◻◻◻◻◻◻◻◻◻◻



3C
M Available stone shapes:
○◊◻◻◻◻◻◻◻◻◻◻



3C
Q Available stone shapes:
○◊◻◻◻◻◻◻◻◻◻◻



3C
T Available stone shapes:
○◊◻◻◻◻◻◻◻◻◻◻

K 122105 Round-Shape Three-Stone Semi-Set Engagement Ring, 1 CT Center (6.5mm), ¾ CTW, 14K White, 32, size 7, **\$6,315**. Mounting 122105, **\$645**.

51226 Matching Band, 14K White, size 7, **\$445**

L 122842 Oval-Shape Halo-Style Semi-Set Engagement Ring, ¾ CT Center (7x5mm), ½ CTW, 14K Rose, 32, size 7, **\$1,589**. Mounting 122842, **\$475**.

122843 Matching Diamond Band, ½ CTW, 14K Rose, 32, size 7, **\$999**. Mounting 122843, **\$335**.

M 122787 Round-Shape Three-Stone Diamond Anniversary Band, ¼ CT Centers (3- 4.1mm), ¾ CTW, 14K White, 32, size 7, **\$4,019**. Mounting 122787, **\$579**.

N 121986 Emerald-Shape Three-Stone Semi-Set Engagement Ring, 1 ¼ CT Center (7x5mm), ¾ CTW, 14K White, 125, size 7, **\$3,415**. Mounting 121986, **\$515**.

51233 Matching Band, 14K White, size 7, **\$459**

P 122838 Round-Shape Diamond-Accented Semi-Set Engagement Ring, 1 CT Center (6.5mm), ½ CTW, 14K White, 32, size 7, **\$1,059**. Mounting 122838, **\$465**.

122839 Matching Diamond Band ½ CTW, 14K White, 32, size 7, **\$989**. Mounting 122839, **\$359**.

Q 123079 Round-Shape Three-Stone Diamond Anniversary Band, ¼ CT Centers (3- 4.1mm), ¾ CTW, 14K Yellow, 32, size 7, **\$3,765**. Mounting 123079, **\$419**.

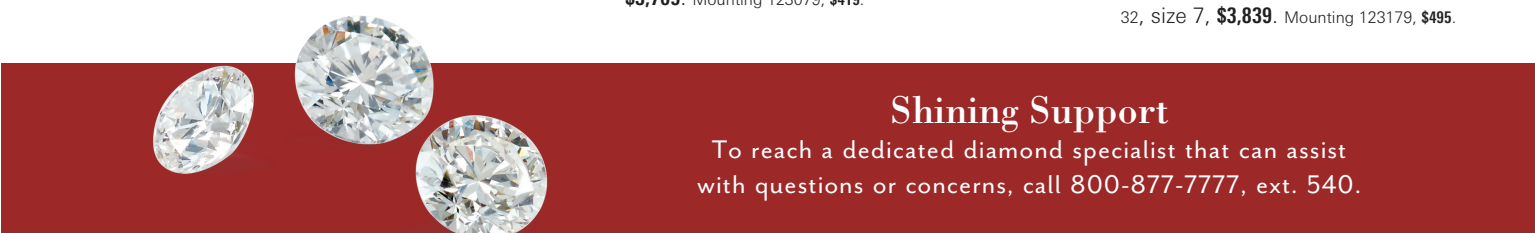
R 122000 Round-Shape Three-Stone Semi-Set Engagement Ring, 1 CT Center (6.5mm), ½ CTW, 14K White, 32, size 7, **\$2,385**. Mounting 122000, **\$545**.

122154 Matching Diamond Band ¼ CTW, 14K White, 32, size 7, **\$1,085**. Mounting 122154, **\$415**.

S 121987 Cushion-Shape Halo-Style Semi-Set Engagement Ring, 1 ¼ CT Center (6x6mm), ½ CTW, 14K Rose, 32, size 7, **\$1,409**. Mounting 121987, **\$395**.

122145 Matching Diamond Band ¼ CTW, 14K Rose, 32, size 7, **\$995**. Mounting 122145, **\$325**.

T 123179 Round-Shape Three-Stone Diamond Anniversary Band, ¼ CT Centers (3- 4.1mm), ¾ CTW, 14K White, 32, size 7, **\$3,839**. Mounting 123179, **\$495**.



Shining Support
To reach a dedicated diamond specialist that can assist with questions or concerns, call 800-877-7777, ext. 540.

bridal SHANKS



A



E



J



B



F



K



C



G



L



D



H



M

A **SH452** Pinched Half Round Comfort-Fit Shank for 4-Prong Setting, 3.35mm shoulder, 14K Rose, **\$425**

B **SH633** Diamond-Accented Cathedral Shank for Peg Setting, 1/2 CTW, 3.98mm span, 2.38x4.76mm shoulder, 14K White, **\$889**

C **SH639** Floral Embossed Cathedral Shank for Peg Setting, 6mm span, 2.55x2.35mm shoulder, 14K White, **\$319**

D **SH587** Diamond-Accented Two-Tone Split Shank for Peg Setting, 1/2 CTW, 4.8mm span, 5.16x4.7mm shoulder, 14K Two-Tone, **\$1,329**

E **SH453** Pinched Half Round Comfort-Fit Shank for 6-Prong Setting, 3mm shoulder, 14K White, **\$395**

F **SH658** Diamond-Accented French Set Cathedral Shank for Peg Setting, 1/2 CTW, 3.85mm span, 2.1x3.1mm shoulder, 14K White, **\$1,259**

G **SH646** Embossed Cathedral Shank for Peg Setting, 7.5mm span, 2.5x3.5mm shoulder, 14K White, **\$425**

H **SH660** Milgrain Leaf Cathedral Shank with Accents for Peg Setting, 3.9mm span, 6.85x2.45mm shoulder, 14K White, **\$385**

J **SH647** Diamond-Accented Shank for 4-Prong Setting, 3/8 CTW, 1.9x1.9mm shoulder, 14K White, **\$1,319**

K **SH656** Diamond-Accented Cathedral Shank for Peg Setting, 3/8 CTW, 2.8mm span, 2.6x3mm shoulder, 14K White, **\$1,259**

L **SH667** Sculptural Milgrain Cathedral Shank for Peg Setting, 4.5mm span, 7.45x4.05mm shoulder, 14K White, **\$375**

M **SH662** Milgrain Leaf Cathedral Shank for Peg Setting, 4.9mm span, 2.7x1.7mm shoulder, 14K White, **\$349**

bridal SETTINGS



A



F



L



B



G



M



C



H



N



D



J



P



E



K



Q

A **29625** Round-Shape Decorative Peg Setting, 6.5mm center, 5.45mm height, 14K White, **\$75**

B **29774** Round-Shape Semi-Set Peg Setting, 1/10 CTW, 6.5mm center, 5.4mm height, 14K White, **\$449**

C **29757** Round-Shape Decorative Peg Setting, 6.5mm center, 6.38mm height, 14K White, **\$85**

D **29671** Round-Shape Semi-Set Peg Setting, 1/10 CTW, 6.5mm center, 8.26mm height, 14K White, **\$409**

E **29733** Round-Shape Decorative Peg Setting, 6.5mm center, 6.67mm height, 14K White, **\$75**

F **29647** Round-Shape Halo-Style Semi-Set Peg Setting, 1/4 CTW, 6.5mm center, 9.3mm height, 14K White, **\$1,075**

G **29451** Round-Shape Halo-Style Semi-Set Peg Setting, 1/4 CTW, 6.5mm center, 8.8mm height, 14K White, **\$689**

H **29452** Cushion-Shape Halo-Style Semi-Set Peg Setting, 1/6 CTW, 6x6mm center, 8.3mm height, 14K White, **\$649**

J **29456** Pear-Shape Halo-Style Semi-Set Peg Setting, 1/6 CTW, 7x5mm center, 7.57mm height, 14K White, **\$625**

K **29454** Square-Shape Halo-Style Semi-Set Peg Setting, 1/4 CTW, 6x6mm center, 8.3mm height, 14K White, **\$765**

L **29228** Round-Shape Claw Peg Setting, 6.5mm center, 7.5mm height, 14K White, **\$65**

M **311** Round-Shape Low Peg Setting, 6.0mm center, 6.25mm height, 14K White, **\$59**

N **24066** Square-Shape Pre-Notched Peg Setting, 6x6mm center, 7mm height, 14K White, **\$85**

P **2737** Pear-Shape V-End Peg Setting, 8x5.5mm center, 6.5mm height, 14K White, **\$105**

Q **411** Round-Shape Low Shank Setting, 6.0-6.6mm center range, 7.25mm height, 14K White, **\$65**

stackable RINGS



A



C



E



B



D



F



G



J



L



H



K



M

A **123338** Diamond Asymmetrical Ring, 1/10 CT, 14K Rose, 33, **\$635**. Mounting 123338, **\$415**.

123298 Diamond Asymmetrical Ring, 1/5 CTW, 5.4mm, 14K White, 33, **\$859**. Mounting 123298, **\$375**.

51824 Asymmetrical Beaded Ring, 5.1mm width, 14K Yellow, **\$355**

B **123123** Diamond French-Set Anniversary Band, 1/6 CTW, 14K Rose, 32, **\$945**. Mounting 123123, **\$349**.

123430 Diamond French-Set Anniversary Band, 1/2 CTW, 14K White, 32, **\$1,529**. Mounting 123430, **\$369**.

123223 Diamond French-Set Anniversary Band, 5/8 CTW, 14K Yellow, 32, **\$1,755**. Mounting 123223, **\$379**.

C **123502** Diamond Anniversary Band 3/8 CTW, 14K White, 26, 32, **\$1,305**. Mounting 123502, **\$319**.

123294 Diamond Anniversary Band, 3/4 CTW, 14K Yellow, 26, **\$2,315**. Mounting 123294, **\$295**.

123175 Diamond Anniversary Band 1/4 CTW, 14K Rose, 26, 32, **\$1,259**. Mounting 123175, **\$385**.

D **122932** Chatham® Created Blue Sapphire Ring, 4x2mm, 14K Yellow, 7, **\$1,429**. Mounting 122932, **\$429**.

123549 Diamond Anniversary Band 1/2 CTW, 14K White, 21, 32, **\$1,645**. Mounting 123549, **\$345**.

123176 Diamond Channel-Set Anniversary Band, 1/2 CTW, 14K Rose, 21, 35, **\$1,545**. Mounting 123176, **\$545**.

E **123338** Diamond Asymmetrical Ring, 0.08 CT, 14K Yellow, 124, **\$575**. Mounting 123338, **\$409**.

123338 Diamond Asymmetrical Ring, 1/5 CT, 14K Rose, 20, **\$1,229**. Mounting 123338, **\$429**.

123338 Diamond Asymmetrical Ring, 1/8 CT, 14K White, 117, **\$879**. Mounting 123338, **\$429**.

F **123288** Diamond Ring 1/6 CTW, 14K Rose, 33, **\$565**. Mounting 123288, **\$329**.

122844 Diamond Anniversary Band, 3/8 CTW, 14K White, 32, **\$1,385**. Mounting 122844, **\$429**.



123180 Diamond Anniversary Band, 1/2 CTW, 14K Yellow, 32, **\$1,419**. Mounting 123180, **\$379**.



G **72005** Genuine Aquamarine Bar Ring, 2mm, 14K White, 45, **\$689**. Mounting 72005, **\$439**.

51832 Beaded Bar Ring, 3.2mm width, 14K Yellow, **\$445**

72005 Diamond Bar Ring, 1/4 CTW, 14K White, 45, **\$439**. Mounting 72005, **\$689**.

H **51570** Twisted Rope Ring, 2.2mm width, 14K Rose, **\$295**

123004 Diamond Anniversary Band, 1/6 CTW, 14K White, 32, **\$1,075**. Mounting 123004, **\$339**.

122680 Diamond Anniversary Band, 1/6 CTW 14K Yellow, 32, **\$859**. Mounting 122680, **\$375**.

J **71991** Genuine Peridot Ring, 2.5mm, 14K Yellow, 61, **\$465**. Mounting 71991, **\$375**.

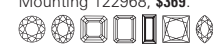
50929 Beaded Ring, 2.5mm width, 14K Rose, **\$319**

122856 Diamond Ring, 1/3 CTW, 14K White, 33, **\$1,229**. Mounting 122856, **\$449**.

K **122887** Diamond Stackable Ring, 1/6 CT, 2.6mm, 14K Yellow, 20, **\$1,619**. Mounting 122887, **\$339**.

123534 Diamond Anniversary Band, 1/2 CTW 14K Rose, 21, **\$1,405**. Mounting 123534, **\$365**.

122968 Diamond Anniversary Band, 1/3 CTW, 14K White, 21, **\$1,225**. Mounting 122968, **\$369**.



L **123423** Diamond Anniversary Band 1/6 CTW, 14K Yellow, 32, **\$695**. Mounting 123423, **\$355**.

123463 Diamond Sculptural Anniversary Band, 0.05 CTW, 14K Rose, 32, **\$669**. Mounting 123463, **\$395**.

123575 Diamond Anniversary Band, 1/2 CTW 14K White, 26, **\$1,999**. Mounting 123575, **\$359**.

M **123105** Diamond Anniversary Band 1/6 CTW, 14K Rose, 32, **\$745**. Mounting 123105, **\$239**.

50928 Beaded Ring, 3.5mm width 14K White, **\$479**

123283 Diamond Anniversary Band, 0.04 CTW, 14K Yellow, 32, **\$535**. Mounting 123283, **\$449**.

Stacking Stuffers

Collect, mix and match, and celebrate being together



A. **123430** Diamond French-Set Anniversary Band, 1.5mm, 1/2 CTW, 14K Yellow, 32, size 7, **\$1,535**. Mounting 123430, **\$345**. | B. **123423** Diamond Anniversary Band, 2mm, 1/6 CTW, 14K White, 32, size 7, **\$689**. Mounting 123423, **\$379**. | C. **123531** Diamond Anniversary Band, 3x1.5mm, 3/4 CTW, 14K White, 21, 32, size 7, **\$2,209**. Mounting 123531, **\$529**. | D. **123491** Diamond Anniversary Band, 2mm, 1/4 CTW, 14K Rose, 32, size 7, **\$925**. Mounting 123491, **\$369**. | E. **123420** Diamond Anniversary Band, 1.3mm, 1/6 CTW, 14K White, 32, size 7, **\$875**. Mounting 123420, **\$465**. | F. **123492** Diamond Anniversary Band, 2mm, 1/4 CTW, 14K Yellow, 32, size 7, **\$919**. Mounting 123492, **\$365**. | G. **123225** Round-Shape Diamond French-Set Eternity Band, 2mm, 7/8 CTW, 14K White, 32, size 7, **\$2,219**. Mounting 123225, **\$315**. | H. **123441** Diamond Infinity Anniversary Band, 2.5mm, 1/2 CTW, 14K Rose, 32, size 7, **\$1,615**. Mounting 123441, **\$615**.



123104 Round-Shape Diamond Anniversary Band, 1.0mm, 1/4 CTW, 32, size 7
14K White, **\$1,399**. Mounting 123104, **\$579**.
14K Yellow, **\$1,409**. Mounting 123104, **\$559**.
14K Rose, **\$1,415**. Mounting 123104, **\$565**.

123093 Round-Shape Diamond Anniversary Band, 1.0mm, 1/6 CTW, 32, size 7
14K White, **\$1,025**. Mounting 123093, **\$395**.
14K Yellow, **\$1,029**. Mounting 123093, **\$375**.
14K Rose, **\$1,029**. Mounting 123093, **\$375**.

123626 Round-Shape Diamond Anniversary Band, 2.0mm, 1/4 CTW, 32, size 7
14K White, **\$1,055**. Mounting 123626, **\$325**.
14K Yellow, **\$1,029**. Mounting 123626, **\$295**.
14K Rose, **\$1,029**. Mounting 123626, **\$299**.

NEW
3C

Eternity band 123627.
○○○○□□



NEW
3C

123602 Diamond Anniversary Band, 2.0mm, 1/3 CTW, 32, size 7
14K White, **\$1,075**. Mounting 123602, **\$309**.
14K Yellow, **\$1,049**. Mounting 123602, **\$285**.
14K Rose, **\$1,055**. Mounting 123602, **\$285**.
Eternity band 123623.
○○○○

NEW
3C

123600 Diamond Anniversary Band, 2.0mm, 3/8 CTW, 32, size 7
14K White, **\$1,259**. Mounting 123600, **\$325**.
14K Yellow, **\$1,235**. Mounting 123600, **\$299**.
14K Rose, **\$1,239**. Mounting 123600, **\$305**.
Eternity band 123601.
○○○○□□

NEW
3C

123594 Diamond Anniversary Band, 2.0mm, 1/4 CTW, 32, size 7
14K White, **\$1,155**. Mounting 123594, **\$419**.
14K Yellow, **\$1,129**. Mounting 123594, **\$399**.
14K Rose, **\$1,135**. Mounting 123594, **\$405**.
Eternity band 123595.
○○○○



123020 Baguette-Shape Diamond Anniversary Band, 2.75x1mm, 1/6 CTW, 21, size 7
14K White, **\$975**. Mounting 123020, **\$355**.
14K Yellow, **\$979**. Mounting 123020, **\$329**.
14K Rose, **\$985**. Mounting 123020, **\$335**.

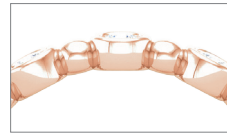
123092 Baguette and Round-Shape Diamond Anniversary Band, 3.2x1.5mm, 1/2 CTW, 21, 32, size 7
14K White, **\$1,295**. Mounting 123092, **\$319**.
14K Yellow, **\$1,295**. Mounting 123092, **\$295**.
14K Rose, **\$1,299**. Mounting 123092, **\$299**.

123178 Diamond Anniversary Band, 3x1.25mm, 3/8 CTW, 21, size 7
14K White, **\$1,149**. Mounting 123178, **\$315**.
14K Yellow, **\$1,155**. Mounting 123178, **\$289**.
14K Rose, **\$1,155**. Mounting 123178, **\$295**.

NEW bridal ANNIVERSARY AND ETERNITY BANDS

3C

Round-Shape Bezel-Set Diamond Band, 14K Rose, 32, size 7



| mm Stone | 123631 Anniversary | | 123630 Eternity | |
|----------|--------------------|---------|-----------------|---------|
| | CTW | 14K | CTW | 14K |
| 2.0 | 1/5 | \$955 | 3/8 | \$1,459 |
| 2.25 | 1/4 | \$1,305 | 1/2 | \$1,935 |
| 2.5 | 3/8 | \$1,539 | 5/8 | \$2,145 |
| 2.75 | 1/2 | \$2,079 | 3/4 | \$2,735 |
| 3.0 | 1/2 | \$1,999 | 1 | \$3,389 |
| 3.2 | 5/8 | \$2,255 | 1 | \$3,519 |
| 3.4 | 3/4 | \$3,005 | 1 1/3 | \$4,815 |
| 3.75 | 1 | \$4,809 | 1 5/8 | \$7,155 |
| 3.8 | 1 1/8 | \$4,829 | 1 3/4 | \$7,199 |
| 4.0 | 1 1/8 | \$6,729 | 1 5/8 | \$9,029 |

3C

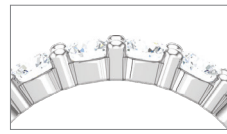
Round-Shape Bezel-Set Diamond Band, 14K Yellow, 32, size 7



| mm Stone | 123596 Anniversary | | 123597 Eternity | |
|----------|--------------------|---------|-----------------|----------|
| | CTW | 14K | CTW | 14K |
| 1.5 | 1/4 | \$1,245 | 1/2 | \$2,075 |
| 1.75 | 1/3 | \$1,449 | 5/8 | \$2,405 |
| 2.0 | 1/2 | \$1,499 | 7/8 | \$2,469 |
| 2.25 | 1/2 | \$1,949 | 1 | \$3,385 |
| 2.5 | 3/4 | \$2,315 | 1 3/8 | \$3,775 |
| 2.75 | 7/8 | \$2,819 | 1 3/4 | \$5,015 |
| 3.0 | 1 1/8 | \$3,505 | 2 | \$5,779 |
| 3.2 | 1 | \$3,375 | 2 1/4 | \$6,299 |
| 3.4 | 1 1/3 | \$4,639 | 2 3/4 | \$8,449 |
| 3.5 | 1 3/8 | \$6,605 | 2 7/8 | \$12,335 |

3C

Round-Shape Shared-Prong Diamond Band, 14K White, 32, size 7



| mm Stone | 122877 Anniversary | | 122107 Eternity | |
|----------|--------------------|---------|-----------------|---------|
| | CTW | 14K | CTW | 14K |
| 1 | 1/8 | \$869 | 1/4 | \$1,415 |
| 1.3 | 1/5 | \$979 | 3/8 | \$1,659 |
| 1.5 | 1/4 | \$1,109 | 1/2 | \$1,879 |
| 1.8 | 3/8 | \$1,279 | 5/8 | \$2,205 |
| 2 | 3/8 | \$1,319 | 7/8 | \$2,305 |
| 2.25 | 5/8 | \$1,715 | 1 | \$3,215 |
| 2.5 | 5/8 | \$1,895 | 1 3/8 | \$3,465 |
| 2.8 | 3/4 | \$2,449 | 1 1/2 | \$4,839 |
| 3 | 1 | \$3,055 | 2 | \$5,609 |
| 3.2 | 1 | \$3,169 | 2 1/4 | \$6,119 |

3C

Round-Shape Channel-Set Diamond Band, 14K White, 32, size 7



| mm Stone | 122981 Anniversary | | 123096 Eternity | |
|----------|--------------------|----------|-----------------|----------|
| | CTW | 14K | CTW | 14K |
| 2 | 1/2 | \$1,715 | 9/10 | \$2,659 |
| 2.25 | 1/2 | \$2,175 | 1 1/8 | \$3,685 |
| 2.5 | 3/4 | \$2,439 | 1 1/2 | \$3,949 |
| 2.75 | 3/4 | \$3,139 | 1 7/8 | \$5,265 |
| 3 | 1 | \$3,615 | 2 1/8 | \$6,435 |
| 3.2 | 1 1/5 | \$4,075 | 2 1/2 | \$7,075 |
| 3.4 | 1 1/3 | \$5,089 | 3 | \$9,509 |
| 3.5 | 1 3/8 | \$7,055 | 3 5/8 | \$14,649 |
| 3.75 | 1 3/4 | \$8,239 | 4 | \$14,715 |
| 4.1 | 2 | \$10,645 | 4 1/4 | \$20,329 |

bridal DIAMOND BANDS



A



E



J



B



F



K



C



G



L



D

Available center stone shapes:



H

Available center stone shapes:



M

Available center stone shapes:

A **123396** Diamond Anniversary Band, 1/2 CTW, 14K Yellow, 26, 32, size 7, **\$1,999**. Mounting 123396, **\$429**.

B **69816** Diamond Eternity Band, 1/4 CTW, 14K Rose, 109, size 7, **\$2,015**. Mounting 69816, **\$1,259**.

C **653068** Diamond Anniversary Band, 1 1/2 CTW, 14K White, 545, size 7, **\$4,899**.

D **123389** Diamond Anniversary Band, 1/2 CTW, 14K White, 32, size 7, **\$1,729**. Mounting 123389, **\$425**.

E **123392** Diamond Anniversary Band, 3/8 CTW, 14K Rose, 26, 32, size 7, **\$1,479**. Mounting 123392, **\$335**.

F **123365** Diamond Anniversary Band, 3/8 CTW, 14K Yellow, 32, size 7, **\$1,819**. Mounting 123365, **\$569**.

G **653071** Diamond Anniversary Band, 3/4 CTW, 5.7mm, 14K White, 545, size 7, **\$2,275**.

H **123390** Diamond Anniversary Band, 1/2 CTW, 14K White, 32, size 7, **\$1,755**. Mounting 123390, **\$445**.

J **123328** Diamond Anniversary Band, 3/10 CTW, 14K Yellow, 32, size 7, **\$2,915**. Mounting 123328, **\$469**.

K **123299** Diamond Anniversary Band, 1/2 CTW, 14K Rose, 32, size 7, **\$2,445**. Mounting 123299, **\$755**.

L **123296** Diamond Anniversary Band, 1 1/8 CTW, 14K White, 32, 35, size 7, **\$3,715**. Mounting 123296, **\$929**.

M **123080** Diamond Anniversary Band, 1/2 CTW, 14K White, 32, size 7, **\$1,709**. Mounting 123080, **\$399**.

The Perfect Pairing

A gathering of bands to complement any style



A. **51811** Cross-Style Wedding Band, 6mm width, 14K Two-Tone, size 10, **\$1,189** | B. **IRL7** Comfort-Fit Light Band, 2mm width, 14K White, size 7, **\$235** | C. **51834** Link Wedding Band, 3mm width, 14K Yellow, size 7, **\$415** | D. **51765** Design-Engraved Wedding Band, 3.2mm width, 14K Rose, size 7, **\$479** | E. **MGR10** Milgrain Comfort-Fit Light Band, 4mm width, 14K Yellow, size 10, **\$585** | F. **123307** Channel-Set Diamond Wedding Band, ⅜ CTW, 6mm width, 14K Rose, 32, size 10, **\$2,295**. Mounting 123307, **\$1,149** | G. **51810** Comfort-Fit Woven Design Wedding Band, 6mm width, 14K White, size 10, **\$1,069**

bridal LADIES' WEDDING BANDS



A **51808** Geometric Wedding Band, 2mm width, 14K Rose, size 7, **\$365**
51802 Watch Strap Wedding Band, 2mm width, 14K Yellow, size 7, **\$535**
653112 Infinity Wedding Band, 2.5mm width, 14K White, size 7, **\$769**

B **51694** Layered Stackable Rope Band, 5.25mm width, 14K Rose, size 7, **\$625**

C **652822** Three-Band Rolling Ring, 2.4mm width, 14K Tri-Color, size 7, **\$949**

D **51766** Sculptural Wedding Band, 3.5mm width, 14K White, size 7, **\$515**
51791 Floral Wedding Band, 3.65mm width, 14K Rose, size 7, **\$595**
51792 Floral Wedding Band, 3mm width, 14K Yellow, size 7, **\$525**

E **51835** Woven Wedding Band, 4.68mm width, 14K White, size 7, **\$435**

F **652826** Three-Band Diamond Rolling Ring, 3⅓ CTW, 3.4mm width, 14K Tri-Color, 32, size 7, **\$7,605**

G **51695** Skinny Rope Band, 1.5mm width, 14K Yellow, size 7, **\$199**
51788 Infinity Wedding Band, 1.45mm width, 14K White, size 7, **\$439**
51579 Sculptural-Style Wedding Band, 3mm width, 14K Rose, size 7, **\$325**

H **51777** Sculptural-Style Wedding Band, 7.2mm width, 14K Yellow, size 7, **\$1,459**

J **652823** Six-Band Rolling Ring, 1.4mm width, 14K Tri-Color, size 7, **\$845**

bridal CLASSIC WEDDING BANDS



A **HR** Half-Round Band, 2mm, 14K Rose, size 7, **\$249**; size 10, **\$265**

B **F** Flat Band, 4mm, 14K White, size 7, **\$445**; size 10, **\$485**

C **MG** Milgrain Band, 6mm, 14K Yellow, size 7, **\$719**; size 10, **\$789**

D **IR** Half-Round Comfort-Fit Band, 3mm, 14K White, size 7, **\$559**; size 10, **\$609**

E **FIR** Flat Comfort-Fit Band, 5mm, 14K Yellow, size 7, **\$795**; size 10, **\$889**

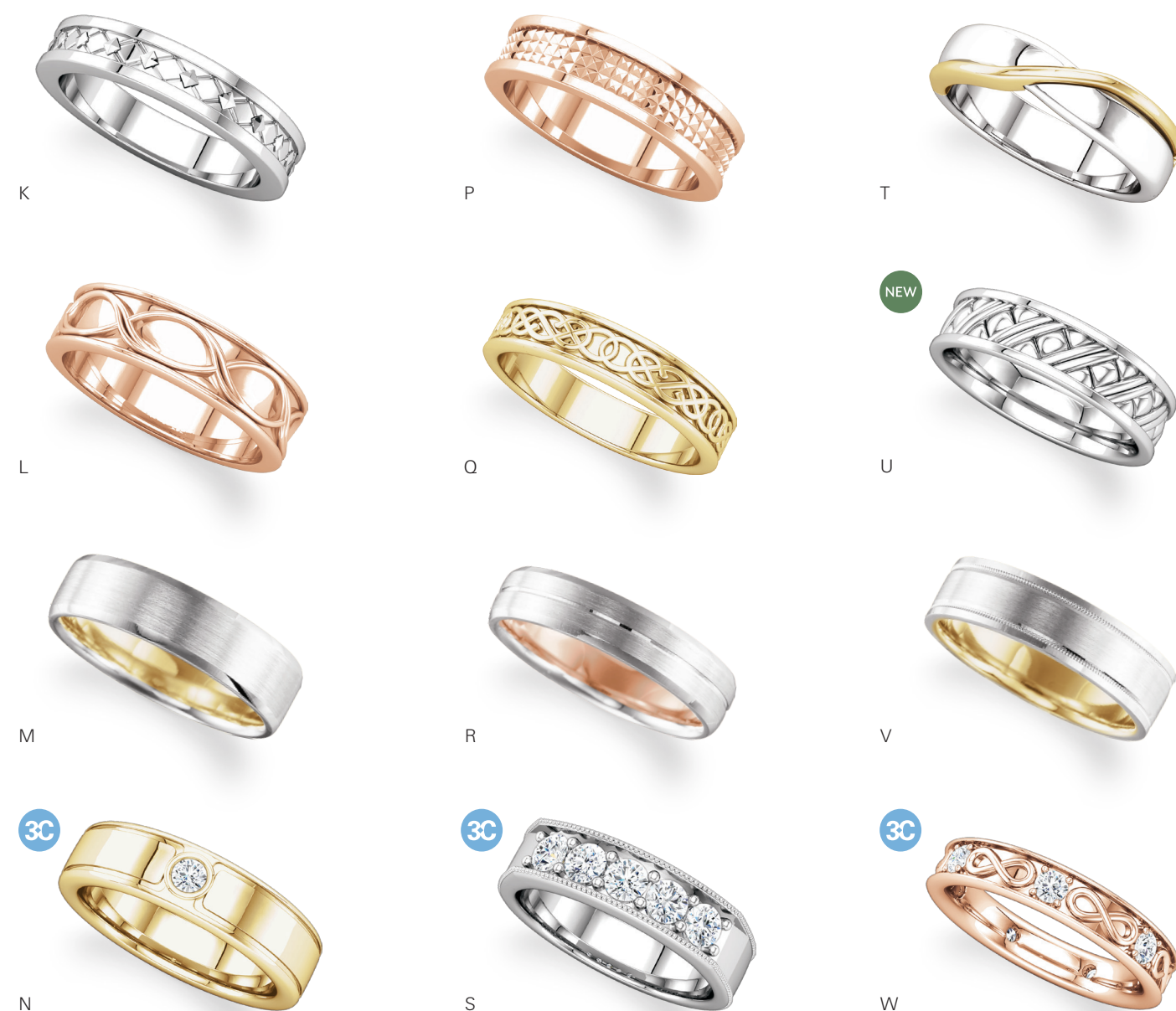
F **MGR** Milgrain Comfort-Fit Band, 7mm, 14K Rose, size 7, **\$1,075**; size 10, **\$1,189**

G **IRE** Half-Round Comfort-Fit Edge Band, 4mm, 14K Yellow, size 7, **\$599**; size 10, **\$639**

H **FE** Flat Edge Band, 6mm, 14K Rose, size 7, **\$625**; size 10, **\$689**

J **DMGR** Double Milgrain Comfort-Fit Band, 8mm, 14K White, size 7, **\$1,285**; size 10, **\$1,409**

bridal FANCY WEDDING BANDS



Available stone shapes:



Available stone shapes:

K **51826** Geometric Pyramid Wedding Band, 4mm, 14K White, size 7, **\$855**; size 10, **\$959**

L **51741** Infinity Wedding Band, 6mm, 14K Rose, size 7, **\$1,035**; size 10, **\$1,155**

M **653076** Fancy Wedding Band, 6mm, 14K Two-Tone, size 7, **\$1,345**; size 10, **\$1,429**

N **123478** Bezel-Set Wedding Band, 3.0mm, 14K Yellow, 32, size 11, **\$2,175**. Mounting 123478, **\$1,885**.

P **51825** Geometric Pyramid Wedding Band, 5mm, 14K Rose, size 7, **\$875**; size 10, **\$979**

Q **51745** Comfort-Fit Celtic Design Wedding Band, 5mm, 14K Yellow, size 7, **\$855**; size 10, **\$949**

R **653077** Fancy Wedding Band, 5mm, 14K White, size 7, **\$1,209**; size 10, **\$1,279**

S **123291** Channel-Set Diamond Wedding Band, 1 1/2 CTW, 6mm, 14K White, 32, size 11, **\$5,405**. Mounting 123291, **\$1,569**.

T **51819** Twisted Wedding Band, 5mm, 14K Two-Tone, size 7, **\$899**; size 10, **\$1,015**

U **51809** Woven Design Wedding Band, 6mm, 14K White, size 7, **\$959**; size 10, **\$1,069**

V **653078** Fancy Wedding Band, 6mm, 14K Two-Tone, size 7, **\$1,375**; size 10, **\$1,435**

W **123436** Channel-Set Wedding Band, 3/4 CTW, 3.0mm, 14K Rose, 32, size 7, **\$2,619**; size 10, **\$3,145**. Mounting 123436, **\$1,095**.

Band Customization

Personalize your band with an engraving, special finish, or laser pattern.

These are simple and meaningful ways to make each band unique.

See available options at [Stuller.com/Engraving](https://www.stuller.com/Engraving).

A Holiday Centerpiece

Present the perfect arrangement of gold-tipped roses to leave a lasting impression.



- A 61-9147 Pink Rose, \$99
- B 61-9148 Yellow Rose, \$99
- C 61-9063 October Opal Colored Rose, \$99
- D 61-9141 Red Rose, \$99
- E 61-9140 24K Gold-Plated Rose, \$139
- F 61-9067 Frozen Rose, \$99
- G 61-9064 Cream Yellow Rose, \$99
- H 61-9065 Pink and Purple Rose, \$99
- J 61-9149 White Rose, \$99
- K 61-9069 Emerald Colored Rose, \$99
- L 61-9062 April Diamond Colored Rose, \$99

All prices are suggested retail.

3 Tips for Holiday Success

- 1 Stuller.com is open 24 hours a day, 7 days a week.
- 2 Stuller is open and shipping on Saturdays in November and December.

| | | | |
|-------------|------|-------------|------|
| November 18 | 10-4 | December 2 | 10-4 |
| November 25 | 10-4 | December 9 | 10-5 |
| | | December 16 | 10-5 |
- 3 Final day to order for Christmas is Friday, December 22.

Visit Stuller.com,
your 24/7 Holiday Resource

Stone Codes

| CODE | STONE CODE | DESCRIPTION | CODE | STONE CODE | DESCRIPTION |
|------|-----------------------------------|---------------------------|------|--------------------------------|----------------------|
| 2 | Chatham® Created Alexandrite | SYN | 101 | Genuine Blue Sapphire | A+, Heat Treated |
| 4 | Chatham® Created Emerald | SYN | 109 | Genuine Round Diamond | SI, G-I |
| 6 | Chatham® Created Ruby | SYN | 110 | Genuine Round Diamond | I1, G-H |
| 7 | Chatham® Created Blue Sapphire | SYN | 124 | Genuine Marquise Diamond | I1, G-I |
| 16 | Freshwater Cultured Pearl- White | AA, Enhanced | 125 | Genuine Emerald Diamond | SI2-SI3, G-I |
| 20 | Genuine Straight Baguette Diamond | VS, G-I | 135 | Genuine Moonstone | Natural |
| 21 | Genuine Straight Baguette Diamond | SI2-SI3, G-I | 156 | Genuine Blue Tanzanite | AA, Heat Treated |
| 25 | Genuine Marquise Diamond | SI1, G-I | 158 | Genuine Opal | AAA, Natural |
| 26 | Genuine Marquise Diamond | SI2-SI3, G-I | 239 | Genuine Round Diamond | G-H, I2 |
| 30 | Genuine Round Diamond | G-H, SI1 | 241 | Genuine Trapezoid Diamond | SI1 |
| 32 | Genuine Round Diamond | SI2-SI3, G-H | 253 | Genuine Pink Morganite | Irradiation |
| 33 | Genuine Round Diamond | I1, G-H | 367 | Genuine White Sapphire | Heat Treated |
| 35 | Genuine Princess Diamond | SI2-SI3, G-H | 406 | Imitation Blue Sapphire | IMIT |
| 39 | Freshwater Cultured Pearl - White | A, Bleaching | 505 | Imitation Green Cubic Zirconia | IMIT |
| 43 | Genuine Amethyst | AA, Heat Treated | 513 | Genuine White Sapphire | AA, Heat Treated |
| 45 | Genuine Aquamarine | AA, Heat Treated | 516 | Genuine Blue Sapphire | SYN |
| 46 | Genuine Blue Zircon | AA, Heat Treated | 518 | Genuine Pink Morganite | Heat Treated |
| 48 | Genuine Citrine | AA, Heat Treated | 520 | Created Emerald | SYN |
| 50 | Genuine Emerald | A, Oiling/Resin Infusion | 521 | Created Opal | SYN |
| 51 | Genuine Emerald | AA, Oiling/Resin Infusion | 528 | Akoya Cultured Pearl - White | Bleaching |
| 55 | Genuine London Blue Topaz | AA, Irradiation | 544 | Genuine Round Diamond | SI, H+ |
| 57 | Genuine Mozambique Garnet | AA, Natural | 545 | Genuine Round Diamond | I1, H+ |
| 60 | Genuine Opal | A, Natural | 548 | Genuine Round Diamond | I2, H+ |
| 61 | Genuine Peridot | AA, Natural | 562 | Genuine Round Diamond | I1-I2, H-I |
| 65 | Genuine Ruby | A, Heat Treated | 606 | Genuine Blue Sapphire | Heating and Pressure |
| 66 | Genuine Ruby | AA, Heat Treated | 614 | Genuine Rainbow Moonstone | Natural |
| 67 | Genuine Blue Sapphire | AA, Heat Treated | 618 | Created Round Diamond | VS-SI, G-I, HPHT |
| 68 | Genuine Blue Sapphire | A, Heat Treated | 619 | Genuine Round Diamond | H-I, I1-I2 |
| 70 | Genuine Pink Sapphire | AA, Heat Treated | 627 | Genuine Pink Morganite | AA, Irradiation |
| 83 | Genuine Pink Tourmaline | AA, Heat Treated | | | |

S STULLER

Stuller.com | 800 877 7777

Below, top to bottom:
See our full selection at Stuller.com/Diamonds and Stuller.com/Gemstones.

Front cover, clockwise from left:

86765 Genuine Blue Sapphire, Aquamarine, Blue Zircon, and Diamond Earrings, 0.07 CTW, 9.4×5.9mm, 14K Yellow, 67, 46, 124, 45, **\$1,345**. Mounting 86765, **\$135**. | **86787** Diamond V Necklace, 0.03 CT, 25.2×11.7mm, 14K Yellow, 33, 18", **\$455**. Mounting 86787, **\$399**. | **652354** Diamond Bracelet, $\frac{3}{4}$ CTW, 16mm, 14K White, 545, 6", **\$3,285** | **123529** Round-Shape Halo-Style Semi-Set Engagement Ring, 1 CT Center (6.5mm), $\frac{1}{8}$ CTW, 14K Yellow, 32, size 7, **\$989**. Mounting 123529, **\$549**
71974 Genuine Ruby and Diamond Crown Ring, 3.0mm, 14K Yellow, 66, 33, **\$1,589**. Mounting 71974, **\$475**.



All prices are suggested retail based on \$1,300 gold, and \$1,100 platinum and are subject to change without notice. Visit Stuller.com for complete product selections, current pricing, and availability. | Items are shown larger than actual size.