



STULLER



EXPRESSIONS OF THE HEART

VALENTINE'S DAY 2016



HEARTS

A. 51575 | B. 122822 | C. 67533 (page 5-7)



EVERYDAY STYLES TO LOVE

A. 86321 | B. 86256 | C. 86291 | D. 122823 (page 8-15)



SEND A MESSAGE

A. 85947 | B. 51589 | C. 651939 | D. 652038 (page 16-17)



MAKE HER SPEECHLESS

A. 651342 | C. 62481 | C. 71800 (page 18-21)

GIFT OF A LIFETIME

A. 122060 | B. 122910 | C. 122924 (page 22-25)



CELEBRATE YOUR LOVE

A. 122755 | B. 122737 | C. 63008 | D. DMGR7 (page 26-27)



PERSONALIZATION

A. 51317 | B. 51550 | C. 85778 (page 28-31)



GIFTS FOR HIM

A. 9831 | B. 86113 (page 34-39)

let's talk about love

Romance, joy, passion, affection, and friendship — on Valentine's Day, your customers celebrate all these facets of love and more. Can you possibly carry gifts to meet each and every wish? You don't have to.

This brochure offers jewelry and bridal styles that capture whatever facet of love lies closest to your customer's heart. From in-the-moment trends and stunning bestsellers to engagement rings and anniversary bands, you'll find them here in your hands. And don't forget gifts for him.

For even more choices, visit Stuller.com/ValentinesDay.

Look for these symbols throughout the guide —



New styles



3C styles



Pantone® Color of the Year: Rose Quartz



Best-selling styles



Styles we love



Pantone® Color of the Year: Serenity

♥ the trend we love

Romantic, fashionable, and flexible, our two-stone selection allows for unique spins on this hot new trend. Available as earrings, rings, and pendants, many models let your customer mix and match center stone types.

To explore all two-stone styles, visit Stuller.com/Two-Stone.



3C 122935 Two-Stone Mounting



Round-Shape, 2-5.2mm, 14kt white, **\$545**

Heart-Shape, 2-5x5mm, 14kt rose, **\$525**



3C 71778 Two-Stone Mounting



Round-Shape, 2-4.1mm, 14kt white, **\$745**

Emerald-Shape, 2-6x4mm, 14kt yellow, **\$799**

tried, true, and new

Hearts will never go out of style. And you have choices as unique as each customer.



A. **86377** Diamond Heart Pendant, $\frac{1}{4}$ CTW, 4.1mm, 14kt rose, 33, **\$1,565**. Mounting #86377, **\$635**. | B. **21838** Diamond Heart Locket, .005 ct, sterling silver, 612, **\$69** | C. **86328** Heart Earrings, 14kt yellow, **\$279 per pair** | D. **86332** Double Heart Chain Slide, 14kt yellow, **\$175** | E. **85883** Heart Earrings, 14kt white, **\$239 per pair**. F. **21954** Heart Locket, 24x18mm, sterling silver with 14kt rose gold plating, **\$95** | G. **21834** Diamond Heart Locket, .005 CTW, 14kt yellow, 498, **\$169** | H. **86192** Diamond Heart Earrings, .02 CTW, 14kt white, 33, **\$415 per pair**. Mounting #86192, **\$155 each**. | J. **68651** Diamond Heart Earrings, $\frac{1}{6}$ CTW, 14kt white, 499, **\$755 per pair** | K. **85896** Diamond Heart Pendant, .07 CTW, 14kt rose, 33, **\$405**. Mounting #85896, **\$189**. | L. **86382** Diamond Heart Pendant, $\frac{3}{8}$ ct, 4x4mm, 14kt white, 536, **\$1,945**. Mounting #86382, **\$399**. | M. **85112** Love is the Key® Pendant, 432, 14kt yellow, **\$405** | N. **21957** Heart Locket, 14kt white, **\$425** | P. **86330** Double Heart Chain Slide, 14kt rose, **\$239** | Q. **68663** Diamond Heart Earrings, $\frac{1}{6}$ CTW, 14kt white, **\$829 per pair** | R. **86316** Pearl Heart Pendant, 2mm, 14kt white, 16, **\$129**. Mounting #86316, **\$145**. | S. **22778** Embossed Bow Heart Locket, 14kt yellow, **\$169** | T. **86336** Diamond Heart Earrings, .06 CTW, 14kt rose, 33, **\$449 per pair**. Mounting #86336, **\$159 each**. | U. **85894** Diamond Heart Pendant, $\frac{1}{6}$ CTW, 14kt rose, 33, **\$955**. Mounting #85894, **\$635**. V. **86329** Double Heart Pendant, 14kt rose, **\$325** | W. **86053** Engravable Heart Locket, 14kt yellow, **\$459** | X. **86331** Double Heart Chain Slide, 14kt rose, **\$249**



21966 Engravable Diamond Heart Locket, .01 CTW, 22x14mm, sterling silver, 612, **\$65**

CH123 Diamond-Cut Cable Chain, 1mm, sterling silver, 18", **\$35**

122818 Diamond Heart Ring, .01 CTW, 14kt yellow, 33, **\$549**.
Mounting #122818, **\$495**.



86335 Diamond Heart Necklace, .03 CTW, 8x10mm, 14kt rose, 33, 16", **\$435**. Mounting #86335, **\$349**.

122822 Diamond Heart Ring, 1/10 CTW, 14kt rose, 33, **\$685**.
Mounting #122822, **\$505**.



86383 Diamond Heart Pendant, 1/10 CTW, 3mm, 14kt yellow, 33, **\$525**. Mounting #86383, **\$275**.

CH132 Cable Chain, 1mm, 14kt yellow, 18", **\$209**

51576 Heart Ring, 11mm, 14kt yellow, **\$529**



86194 Diamond Heart Necklace, .01 CTW, 9x11.5mm, 14kt white, 33, 16.5", **\$385**.

51575 Heart Ring, 3mm, 14kt white, **\$419**



66415 Diamond Heart Necklace, 1/4 CTW, 15x17mm, 14kt rose, 33, 16", **\$995**

122881 Diamond Heart Ring, 1/8 CTW, 14kt rose, 33, **\$779**.
Mounting #122881, **\$325**.



86418 Heart Necklace, 14x9mm, 14kt yellow, 16"-18", **\$349**

51573 Heart Ring, 12mm, 14kt yellow, **\$365**



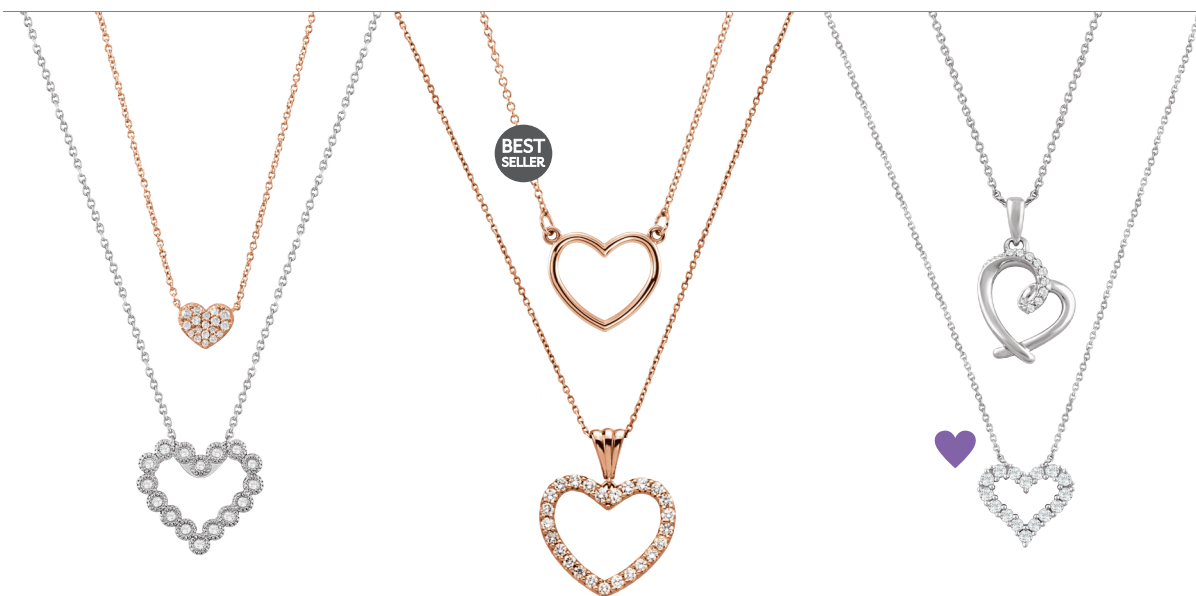
60358 Diamond Heart Ring, .02 CTW, 14kt white, 33, **\$385**. Mounting #111129, **\$319**.

122819 Diamond Heart Ring, 1/8 CTW, 14kt rose, 33, **\$765**. Mounting #122819, **\$309**.

651808 Diamond Two-in-One Heart Necklace, 1/6 CTW, 29x14mm, sterling silver, 548, 18", **\$475**

651921 Diamond Heart Ring, .03 CTW, 3.5x4mm, 14kt white, 432, **\$315**

51574 Diamond Heart Ring, 2mm, 14kt rose, **\$325**



68662 Diamond Heart Necklace, 1/10 CTW, 6x8mm, 14kt rose, 432, 18", **\$575**

651761 Diamond Heart Necklace, 1/8 CTW, 14x15mm, 14kt white, 545, 18", **\$995**

85874 Heart Necklace, 13x14mm, 14kt rose, 16", **\$345**

67533 Diamond Heart Necklace, 1/2 CTW, 23x18mm, 14kt rose, 33, 18", **\$995**. Mounting #84632, **\$329**.

651785 Diamond Heart Necklace, .05 CTW, 22x13mm, sterling silver, 548, 18", **\$225**

651759 Diamond Heart Necklace, 1/4 CTW, 10x12mm, 14kt white, 545, 18", **\$1,169**

everyday styles to love

Her heart will skip a beat with fashionable designs from the latest trends. Choose simple shapes with easy style — ideal for layering and stacking.



A

2016



H



D



C



E



F

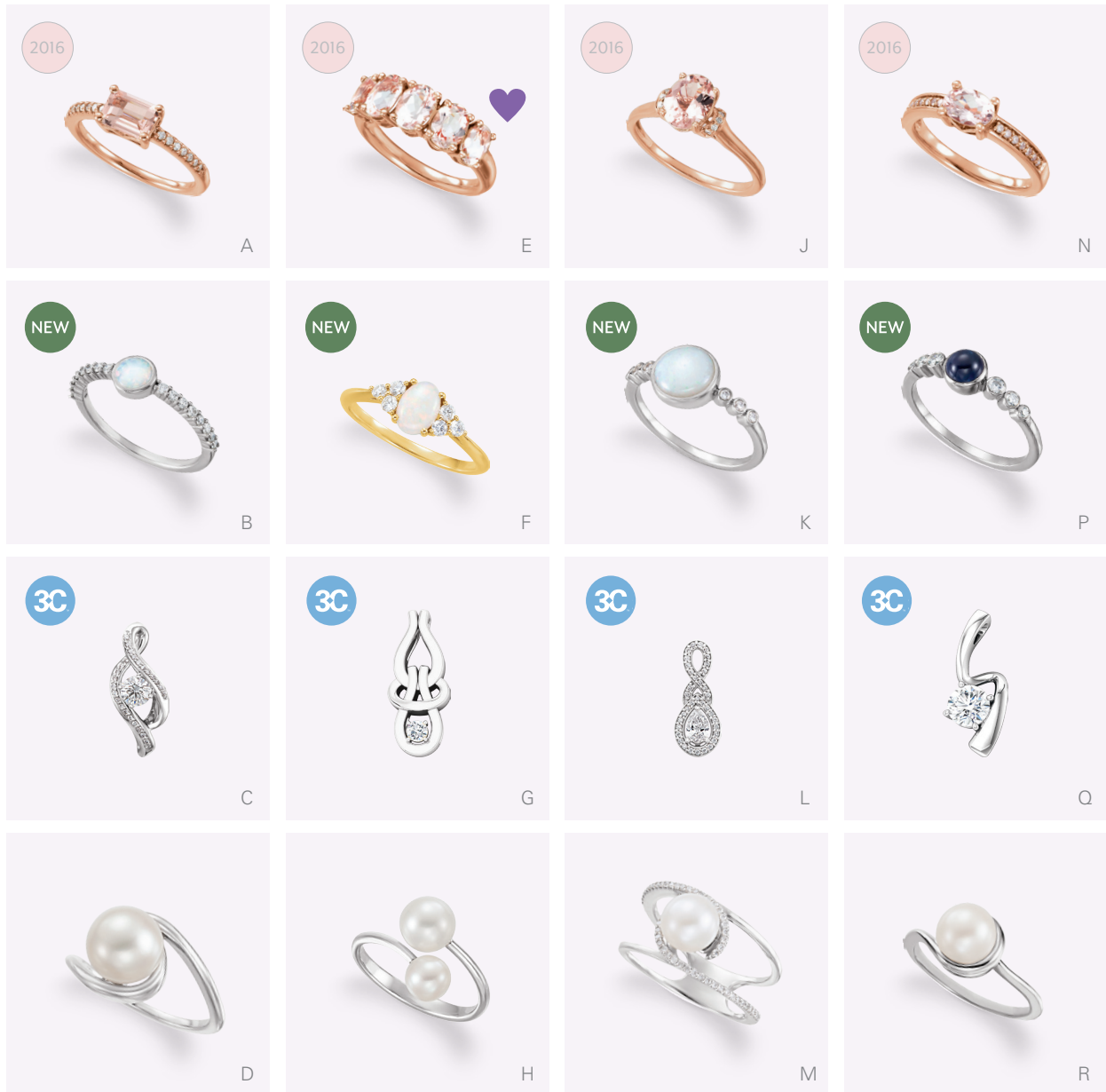


G



B

A. **122817** Diamond Signet Ring, $\frac{1}{6}$ CTW, 18x10mm, 14kt white, 33, **\$935**. Mounting #122817, **\$559**. | B. **86311** Branch Necklace, 9x37mm, 14kt rose, 17.5", **\$385** | C. **652017** Petite Diamond Bar Necklace, .07 CTW, 1.5x12mm, 14kt yellow, 545, 16"-18", **\$485** | D. **122773** Diamond Ring, $\frac{1}{6}$ CTW, 3mm, 14kt white, 33, **\$1,019**. Mounting #122773, **\$525**. | E. **122887** Diamond Baguette Ring, $\frac{1}{6}$ CTW, 4x2mm, 14kt yellow, 33, **\$929**. Mounting #122887, **\$325**. | F. **122916** Diamond Leaf Ring, $\frac{1}{6}$ CTW, 3.5mm, 14kt white, **\$1,075**. Mounting #122916, **\$385**. | G. **86295** Diamond Pendant, $\frac{1}{10}$ CTW, 21x8.5mm, 14kt white, 33, **\$449**. Mounting #86295, **\$209**. **CH132** Cable Chain, 1mm, 14kt white, 18", **\$225** | H. **651986** Genuine Morganite and Diamond Earrings, 5mm, $\frac{1}{6}$ CTW, 8.5mm, 14kt rose, 253, 110, **\$1,295 per pair**



A. **652021** Genuine Morganite and Diamond Ring, 7x5mm, $\frac{1}{10}$ CTW, 14kt rose, 253, 110, **\$975**

B. **71823** Genuine Opal and Diamond Ring, 5mm, $\frac{1}{4}$ CTW, 158, 33, 14kt white, **\$1,039**. Mounting #71823, **\$355**.

C. **86379** Diamond Pendant, $\frac{1}{3}$ CTW, 4.1mm, 20x8mm, 14kt white, 33, **\$1,255**. Mounting #86379, **\$325**.



D. **6483** Freshwater Pearl Ring, 7.5-8mm, 14kt white, 16, **\$595**. Mounting #6483, **\$499**.

E. **652022** Genuine Morganite Ring, 7x5mm, 14kt rose, 253, **\$1,405**

F. **71812** Genuine Opal and Diamond Ring, 7x5mm, $\frac{1}{5}$ CTW, 158, 33, 14kt yellow, **\$929**. Mounting #71812, **\$385**.

G. **86381** Diamond Pendant, $\frac{1}{10}$ CTW, 3mm, 22x9mm, 14kt white, 33, **\$775**. Mounting #86381, **\$505**.



H. **6488** Freshwater Pearl Ring, 6-6.5mm, 7.5-8mm, 14kt white, 16, **\$435**. Mounting #6488, **\$355**.

J. **651876** Genuine Morganite and Diamond Ring, 8x6mm, .05 CTW, 14kt rose, 518, 110, **\$759**

K. **71824** Genuine Opal and Diamond Ring, 8mm, $\frac{1}{8}$ CTW, 60, 33, 14kt white, **\$749**. Mounting #71824, **\$445**.

L. **86378** Diamond Pendant, $\frac{1}{3}$ CTW, 5x3mm, 17x7mm, 14kt white, 33, **\$1,429**. Mounting #86378, **\$305**.



M. **6489** Freshwater Pearl and Diamond Ring, 7.5-8mm, $\frac{1}{8}$ CTW, 14kt white, 16, 33, **\$1,305**. Mounting #6489, **\$645**.

N. **652020** Genuine Morganite and Diamond Ring, 7x5mm, $\frac{1}{10}$ CTW, 14kt rose, 253, 110, **\$1,085**

P. **71826** Genuine Blue Sapphire Cabochon and Diamond Ring, 5mm, $\frac{1}{6}$ CTW, 69, 33, 14kt white, **\$1,109**. Mounting #71826, **\$395**.

Q. **86380** Diamond Pendant, $\frac{3}{4}$ CTW, 6mm, 22x7mm, 14kt white, 33, **\$5,825**. Mounting #86380, **\$299**.



R. **6484** Freshwater Pearl Ring, 7.5-8mm, 14kt white, 16, **\$515**. Mounting #6484, **\$425**.



Styles we love

2016

Color of the Year: Rose Quartz

captivating to wear, layer, and enjoy every day



651950 Petite Bar Necklace,
1.5x12mm, 14kt rose, 16"-18", **\$295**

86361 Diamond Baguette Necklace,
¾ CTW, 3x28mm, 14kt rose, 21,
17", **\$3,745**. Mounting #86361, **\$325**.



86321 V Necklace, 11x10mm,
14kt yellow, 16.5", **\$275**

652147 Diamond V Necklace,
⅙ CTW, 22x25mm, 14kt white,
545, 16"-18", **\$855**



652218 Diamond Bar Necklace,
.05 CTW, 10x1.5mm, 14kt white,
545, 16"-18", **\$475**

652219 Diamond Bar Necklace,
.015 CTW, 23x2mm, 14kt yellow,
545, 16"-18", **\$445**



86339 Diamond Baguette
Earrings, ½ CTW, 9x3mm,
14kt yellow, 21, **\$2,575 per pair**.
Mounting #86339, **\$109 each.***

86325 Square Earrings,
8x8mm, 14kt rose,
\$295 per pair



651886 Diamond Baguette
Bar Earrings, ⅓ CTW,
9x3mm, 14kt rose, 545,
\$945 per pair

86257 X Earrings,
8x8mm, 14kt yellow,
\$225 per pair



651757 Diamond Bar Earrings,
⅒ CTW, 9x2mm, 14kt white,
545, **\$515 per pair**

86256 Triangle Earrings,
7x8mm, 14kt rose,
\$219 per pair



NEW



86322 Circle Necklace,
13mm, 14kt yellow, 18", **\$509**

86255 Crescent Necklace,
11x13mm, 14kt rose, 18", **\$295**

86276 Italian Horn Pendant,
31.5x6mm, 14kt yellow, **\$489**

86337 Diamond Earrings,
.02 CTW, 8mm, 14kt yellow,
33, **\$325 per pair.**

86259 Crescent Earrings,
9x10mm, 14kt rose,
\$155 per pair

CH1020 Cable Chain, 1.4mm,
14kt yellow, 24", **\$495**

Mounting #86337, **\$125 each.***

86260 Italian Horn Earrings,
12x3mm, 14kt yellow,
\$145 per pair



NEW



122825 Diamond Bar Ring,
.05 CTW, 9mm, 14kt white,
33, **\$439.** Mounting #122825, **\$369.**

652150 Diamond Geometric
Ring, 1/3 CTW, 6.5mm,
14kt yellow, 545, **\$1,429**

51602 Circle Ring, 12.5mm,
14kt white, **\$375**

122823 Diamond Bar Ring,
.06 CTW, 6mm,
14kt yellow, 33, **\$825.**
Mounting #122823, **\$739.**

651812 V Ring, 6mm,
14kt rose, **\$375**

651810 Vertical Bar Ring,
11x9mm, 14kt white/
14kt yellow, **\$535**

eye-catching designs with flowing asymmetry



A. **86290** Diamond Necklace, $\frac{1}{6}$ CTW, 2.5x39mm, 14kt white, 33, 17.5", **\$969**. Mounting #86290, **\$385**.

B. **86299** Diamond Necklace, 6x36mm, 14kt rose, 17.5", **\$395**

C. **86291** Diamond Necklace, $\frac{1}{8}$ CTW, 2x39mm, 14kt white, 33, 17.5", **\$845**. Mounting #86291, **\$365**.

D. **86371** Diamond Ear Climbers, $\frac{1}{6}$ CTW, 18.5x2.5mm, 14kt yellow, 33, **\$689 per pair**. Mounting #86371, **\$95 each**.*

E. **122750** Diamond Ring, $\frac{1}{6}$ CTW, 14kt white, 33, **\$989**. Mounting #122750 **\$419**.

F. **122749** Diamond Ring, $\frac{1}{4}$ CTW, 14kt white, 33, **\$1,425**. Mounting #122749, **\$585**.

G. **652131** Diamond Earrings, $\frac{1}{2}$ CTW, 22x17mm, 14kt white, 545, **\$1,815 per pair**

H. **651888** Diamond Halo-Style Cluster Ring, .07 CTW, 14kt white, 545, **\$445**

J. **651928** Diamond Cluster Ring, $\frac{1}{10}$ CTW, 14kt yellow/14kt white, 432, **\$705**

K. **122774** Diamond Ring, $\frac{1}{4}$ CTW, 14kt white, 33, **\$1,425**. Mounting #122774, **\$819**.

L. **122775** Diamond Ring, $\frac{1}{5}$ CTW, 14kt white, 33, **\$1,385**. Mounting #122775, **\$809**.

M. **652119** Freeform Ring, 14kt rose, **\$765**

N. **51572** Rope Ring, 14kt yellow, **\$479**

P. **652124** Freeform Ring, 14kt white/14kt yellow, **\$1,195**

Q. **51583** Rope Ring, 14kt rose, **\$559**



A



C



E



B



D



F

A. **86289** Diamond Earrings, $\frac{3}{8}$ CTW, 7mm, 14kt rose, 33, **\$1,185 per pair**. Mounting #86289, **\$185 each.***

C. **84889** Diamond Hoop Earrings, $\frac{1}{10}$ CTW, 12.5x11.5mm, 14kt rose, 33, **\$645 per pair**. Mounting #84889, **\$239 each.***

E. **86288** Diamond Earrings, $\frac{5}{8}$ CTW, 7mm, 14kt white, 33, **\$1,289 per pair**. Mounting #86288, **\$215 each.***

B. **86287** Diamond Earrings, $\frac{1}{2}$ CTW, 7x7mm, 14kt white, 33, **\$1,585 per pair**. Mounting #86287, **\$185 each.***

D. **67154** Diamond Earrings, $\frac{1}{3}$ CTW, 16x3.5mm 14kt white, 545, **\$1,275 per pair**

F. **86286** Diamond Earrings, $\frac{1}{2}$ CTW, 7x7mm, 14kt yellow, 33, **\$1,369 per pair**. Mounting #86286, **\$179 each.***



BEST SELLER

20865 Bright Finish Ball Earrings, 14kt white. Also available in 14kt yellow and 14kt rose.



3mm, **\$45 per pair**



4mm, **\$49 per pair**



5mm, **\$59 per pair**



6mm, **\$69 per pair**



7mm, **\$85 per pair**



8mm, **\$115 per pair**

BEST SELLER

20270 Tube Hoop Earrings, 2mm, 14kt rose. Sold per pair. Also available in 14kt yellow and 14kt white.



13mm **\$109**



15mm **\$149**



20mm **\$185**



25mm **\$199**



30mm **\$225**



34mm **\$275**

BEST SELLER

20826 Hoop Earrings, 3mm, 14kt yellow. Sold per pair. Also available in 14kt white and 14kt rose.



15mm **\$199**



20mm **\$245**



25mm **\$289**



30mm **\$335**



35mm **\$375**

stackables add up to her personal fashion statement



71806 Chatham® Created Blue Sapphire Ring, 4mm, 14kt yellow, 7, **\$649**. Mounting #71806, **\$419**.

651929 Diamond Ring, .06 CTW, 2.5mm, 14kt white, 432, **\$445**

71810 Genuine Pink Tourmaline Cabochon Ring, 4mm, 14kt rose, 83, **\$355**. Mounting #71810, **\$245**.



122746 Chatham® Created Ruby and Diamond Ring, 4x4mm, .04 CTW, 14kt yellow, 6, 33, **\$669**. Mounting #122746, **\$349**.

122745 Genuine Aquamarine and Diamond Ring, 4x4mm, .05 CTW, 14kt white, 45, 33, **\$705**. Mounting #122745, **\$365**.

122743 Genuine Amethyst and Diamond Ring, 4mm, .05 CTW, 14kt white, 43, 33, **\$569**. Mounting #122743, **\$389**.



71814 Genuine Blue Sapphire Ring, 1.7mm, 14kt yellow, 67, **\$465**. Mounting #71814, **\$329**.

71844 Genuine Pink Tourmaline Ring, 2.3mm, 14kt rose, 83, **\$505**. Mounting #71844, **\$395**.

71813 Genuine Aquamarine Ring, 1.7mm, 14kt white, 45, **\$479**. Mounting #71813, **\$375**.

122853 Diamond Ring, 1/4 CTW, 14kt white, 33, **\$939**. Mounting #122853, **\$405**.



A. **71821** Genuine Opal and Diamond Ring, 5mm, 1/10 CTW, 158, 33, 14kt yellow, **\$835**. Mounting #71821, **\$425**. | B. **51571** Stackable Ring, 3mm, 14kt yellow, **\$359** | C. **651925** Diamond Stackable Ring, .03 CTW, 3mm, 14kt yellow, 432, **\$279** | D. **71831** Genuine Ruby Ring, 1.25mm, 4mm, 14kt yellow, 66, **\$1,139**. Mounting #71831, **\$625**. | E. **652145** Diamond Circle Hinged Bracelet, 1/6 CTW, 8mm, 14kt yellow, 545, 7", **\$1,475** | F. **651924** Beaded Stackable Ring, 2mm, 14kt yellow, **\$225** | G. **122744** Genuine Morganite and Diamond Ring, 5x3mm, .05 CTW, 14kt rose, 518, 33, **\$579**. Mounting #122744, **\$355**. | H. **122811** Diamond Ring, 1/4 CTW, 7mm, 14kt white, 33, **\$1,029**. Mounting #122811, **\$395**.



68970 Diamond Ring, 1/5 CTW, 3mm, 14kt rose, 110, **\$845**



68968 Diamond Ring, 1/8 CTW, 3mm, 14kt white, 110, **\$699**



68969 Diamond Ring, .04 CTW, 3mm, 14kt yellow, 110, **\$479**

NEW



NEW



651930 Diamond Cluster Ring, .025 CTW, 3mm, 14kt white, 432, **\$375**

651931 Diamond Cluster Ring, 1/10 CTW, 3.5mm, 14kt white, 432, **\$655**

651932 Diamond Cluster Ring, 1/5 CTW, 4mm, 14kt white, 537, **\$1,029**



651923 Diamond Square Ring, .04 CTW, 4x4mm, 14kt yellow, 432, **\$289**

651922 Diamond Circle Ring, .04 CTW, 4mm, 14kt white, 432, **\$329**

651921 Diamond Heart Ring, .03 CTW, 3.5x4mm, 14kt rose, 432, **\$285**



122809 Diamond Ring, 1/4 CTW, 7mm, 14kt yellow, 33, **\$769**. Mounting #122809, **\$359**.

122810 Diamond Ring, 1/4 CTW, 7mm, 14kt white, 33, **\$835**. Mounting #122810, **\$389**.

122812 Diamond Ring, 1/4 CTW, 6mm, 14kt rose, 33, **\$815**. Mounting #122812, **\$325**.



J. **BRC180** Hinged Bangle Bracelet, 4mm, 14kt white, 7", **\$599** | K. **67337** Diamond Bangle Bracelet, 2 CTW, 14kt white, 545, 8", **\$5,155**
 L. **BRC1** Half Round Bangle Bracelet, 2mm, 14kt yellow, 7.5", **\$635** | M. **BRC185** Hinged Bangle Bracelet, 6.5mm, 14kt rose, 7", **\$1,049**
 N. **67401** Diamond Ring, 1/3 CTW, 2mm, 14kt rose, 545, **\$1,115** | P. **51376** Hammered Ring, 2mm, 14kt yellow, **\$265**



Styles we love

2016

Color of the Year: Serenity

send a message

Gifts that do the talking



A. **651830** Diamond Arrow Necklace, $\frac{1}{10}$ CTW, 5x25mm, 14kt rose, 545, 16"-18", **\$735** | B. **652146** Diamond Heartbeat Necklace, $\frac{1}{6}$ CTW, 7x23mm, 14kt white, 545, 16"-18", **\$805** | C. **86075** Love Infinity Necklace, 10x27mm, 14kt rose, 17", **\$405** | D. **652038** Diamond Infinity Ring, $\frac{1}{4}$ CTW, 10mm, 14kt white/14kt rose, 562, **\$1,275** | E. **651086** Diamond Infinity Ring, .05 CTW, 8mm, 14kt white, 545, **\$499**



85840 Diamond XO Necklace, .08 CTW, 9x13mm, 14kt white, 33, 16", **\$575**

85947 Infinity Necklace, 8x22mm, 14kt yellow, 16"-18", **\$449**

651829 Arrow Necklace, 5x25mm, 14kt yellow, 16"-18", **\$505**

651939 Diamond Love Necklace, $\frac{1}{5}$ CTW, 10x24.5mm, 14kt white, 432, 18", **\$1,295**



51589 Diamond Infinity Ring, $\frac{1}{8}$ CTW, 7.5mm, 14kt rose, 562, **\$865**

BEST SELLER



51380 Love Infinity Ring, 6mm, 14kt rose, **\$275**

NEW



51618 Infinity Ring, 3mm, 14kt white, **\$415**



652037 Diamond Love Ring, $\frac{1}{6}$ CTW, 9mm, 14kt white, 562, **\$849**



651091 Diamond Infinity Necklace, .06 CTW, 7x22mm, 14kt white, 545, 16"-18", **\$465**

85809 Amore Necklace, 6x30mm, 14kt rose, 16.3", **\$355**

66412 Diamond Horseshoe Necklace, .08 CTW, 8.5x9mm, 14kt yellow, 33, 16", **\$505**

85823 Lucky Necklace, 10x25mm, 14kt yellow, 16.5", **\$339**

86312 Knot Necklace, 8x18.5mm, 14kt yellow, 18", **\$359**

85799 Love Necklace, 10x17mm, 14kt rose, 16.3", **\$329**



651889 Diamond Knot Ring, 1/10 CTW, 5.5mm, 14kt yellow, 545, **\$509**



51311 Infinity Ring, 8mm, 14kt white, **\$475**



51585 Infinity Ring, 7mm, 14kt rose, **\$519**



51512 Knot Ring, 17.5x9mm, 14kt yellow, **\$789**



651088 Diamond Ring, 1/8 CTW, 6mm, 14kt white, 545, **\$565**



651899 Infinity Ring, 8mm, 14kt yellow, **\$455**

make her speechless

Colorful fashion statements inspire wordless wonder — followed by “I love it!”



A. **86279** Chatham® Created Blue Sapphire and Diamond Pendant, 7x5mm, 1/6 CTW, 7, 33, 14kt white, **\$1,225.†** Mounting #86279, **\$279.** | B. **86253** Genuine Pink Tourmaline and Diamond Pendant, 4mm, 1/6 CTW, 14kt rose, 83, 33, **\$649.†** Mounting #86253, **\$195.** | C. **86281** Genuine Swiss Blue Topaz and Diamond Pendant, 8x8x8mm, 1/6 CTW, 14kt white, 77, 33, **\$869.†** Mounting #86281, **\$339.** | D. **86275** Genuine Swiss Blue Topaz and Diamond Earrings, 5x5x5mm, .08 CTW, 14kt white, 77, 33, **\$869 per pair.** Mounting #86275, **\$155 each.*** | E. **86277** Chatham® Created Ruby and Diamond Earrings, 5x5mm, 1/10 CTW, 14kt yellow, 6, 33, **\$1,385 per pair.** Mounting #86277, **\$255 each.***



71792 Genuine Amethyst and Diamond Ring, 8x8x8mm, .08 CTW, 14kt white, 43, 33, **\$689.** Mounting #71792, **\$449.**



71803 Genuine Amethyst Ring, 8x8x8mm, 14kt white, 43, **\$815.** Mounting #71803, **\$609.**

2016



71802 Genuine Swiss Blue Topaz and Diamond Ring, 8x8x8mm, 1/4 CTW, 14kt white, 77, 33, **\$1,255.** Mounting #71802, **\$449.**



71801 Genuine Swiss Blue Topaz and Diamond Ring, 8x8x8mm, 1/5 CTW, 14kt white, 77, 33, **\$1,515.** Mounting #71801, **\$685.**



2016



86308 Genuine London Blue Topaz, Swiss Blue Topaz, and Diamond Earrings, 8x6mm, .01 CTW, 14kt white, 55, 77, 33, **\$635 per pair.** Mounting #86308, **\$229 each.***



86280 Genuine Pink Tourmaline, Baby Pink Topaz, Rhodolite Garnet, and Diamond Earrings, 7x5mm, 1/6 CTW, 14kt rose, 63, 83, 430, 33, **\$1,675 per pair.** Mounting #86280, **\$295 each.***



71799 Genuine London Blue Topaz, Swiss Blue Topaz, Sky Blue Topaz, and Diamond Ring, 8x6mm, .05 CTW, 77, 55, 347, 14kt white, **\$835.** Mounting #71799, **\$619.**

71800 Genuine Pink Tourmaline, Baby Pink Topaz, Rhodolite Garnet, and Diamond Ring, 8x6mm, .05 CTW, 14kt rose, 63, 83, 430, 33, **\$1,355.** Mounting #71800, **\$639.**

†Chain sold separately.

*Earring mountings are sold by each and without backs.

Mystara®
She'll dazzle with
an ever-in-motion
center stone.



651984 Mystara Diamonds®
Necklace, 1/6 CTW, 12x8mm,
14kt white, 545, 18", **\$1,189**



651289 Mystara Diamonds® Necklace,
(1/3 ct center) 1/2 CTW, 13x10mm,
14kt white, 548, 18", **\$2,255**



652135 Mystara Diamonds® Necklace,
(1/3 ct center), 3/8 CTW 12x8mm,
14kt white, 545, 18", **\$1,815**



651763 Mystara Diamonds® Necklace,
1/10 CTW, 19x15mm, sterling silver,
548, 18", **\$425**



651983 Mystara Diamonds® Necklace,
1/4 CTW, (1/6 ct center), 12x14.5mm,
14kt white/14kt rose, 545, 18", **\$1,545**

Forever Brilliant® Moissanite

BEST
SELLER



65782 Three-Prong
Cocktail-Style Forever
Brilliant® Moissanite Stud
Earrings with Friction
Backs, 14kt white, 483,
Mounting #22641.



4mm (1/2 CTW*)
\$439 per pair



4.5mm (3/4 CTW*)
\$505 per pair



5mm (1 CTW*)
\$665 per pair



6.5mm (2 CTW*)
\$1,295 per pair



65785 Four-Prong
Forever Brilliant®
Moissanite Stud
Earrings with Friction
Backs, 14kt white,
483, Mounting #22924.



4.5x4.5mm (1 CTW*)
\$945 per pair



5.5x5.5mm (2 CTW*)
\$1,525 per pair



6x6mm (2 1/2 CTW*)
\$1,959 per pair



6.5x6.5mm (3 CTW*)
\$2,425 per pair



651092 Forever Brilliant® Moissanite
and Diamond Halo-Style Necklace,
6mm (3/4 CT*), 1/5 CTW, 19x10mm,
14kt white, 483, 33, 18", **\$1,289**.
Mounting #85304, **\$259**.

28308 Forever Brilliant® Moissanite and
Diamond Halo-Style Earrings, 4mm
(1/2 CTW*), 1/6 CTW, 7.5mm,
14kt white, 483, 33, **\$1,119 per pair**.
Mounting #28308, **\$99 each**.

For all your loose
moissanite needs, visit
Stuller.com and search
"Love Moissanite."



Styles we love

2016

Color of the Year: Serenity

*Approximate diamond equivalent weight

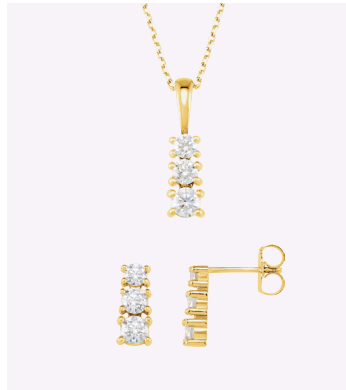
love sparkles

Show her with diamonds



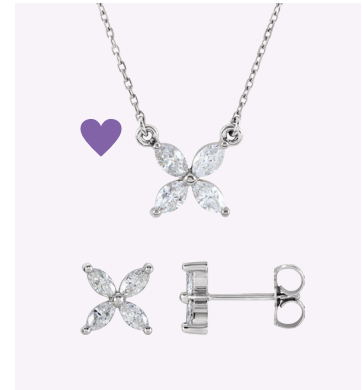
651342 Three-Stone Diamond Necklace, $\frac{1}{3}$ CTW, 16x7mm, 14kt white, 33, 18", **\$1,065**

62481 Three-Stone Diamond Earrings, $\frac{1}{3}$ CTW, 5.5x6mm, 14kt white, 33, **\$975 per pair**. Mounting #22132, **\$45 each**.



21624 Three-Stone Diamond Necklace, $\frac{1}{2}$ CTW, 18x5mm, 14kt yellow, 33, 18", **\$1,845**. Mounting #21624, **\$155**.

62479 Three-Stone Diamond Earrings, $\frac{9}{10}$ CTW, 10.5x5mm, 14kt yellow, 33, **\$2,595 per pair**. Mounting #21623, **\$95 each**.



85941 Diamond Marquise Cluster Necklace, $\frac{1}{2}$ CTW, 10x11mm, 14kt white, 33, 16", **\$1,495**.

85940 Diamond Marquise Cluster Earrings, $\frac{5}{8}$ CTW, 10x10mm, 14kt white, 33, **\$1,655 per pair**. Mounting #85940, **\$225 each**.



A. **66233** Cocktail-Style Diamond Stud Earrings, 1 CTW, 14kt white, 209, **\$3,529 per pair**. Mounting #23578, **\$39 each**.
 B. **85912** Diamond Halo-Styled Earrings, $\frac{1}{2}$ CTW, ($\frac{1}{4}$ ct center), 14kt white, 33, **\$1,789**. Mounting #85912, **\$159 each**.
 C. **1874** Diamond Stud Earrings, 1 CTW, 14kt white, 209, **\$3,539 per pair**. Mounting #1874, **\$45 each**.

D. **652118** Diamond Line Bracelet, 1 CTW, 14kt white, 545, 7", **\$3,049**. | E. **67501** Diamond Line Bracelet, 5 CTW, 14kt white, 33, 7.25", **\$13,079**. Mounting #BRC434, **\$1,775**. | F. **67412** Diamond Line Bracelet, 3 CTW, 14kt white, 33, 7.25", **\$7,779**. Mounting #BRC440, **\$2,025**. | G. **67397** Diamond Line Bracelet, 2 CTW, 14kt yellow, 33, 7.25", **\$5,675**. Mounting #BRC437, **\$1,625**.
 H. **60870** Diamond Line Bracelet, $3\frac{3}{8}$ CTW, 14kt white, 33, 7", **\$7,885**. Mounting #BRC19, **\$1,805**.



85916 Halo-Style Diamond Necklace, 1/4 CTW, 7mm, 14kt white, 33, 16", **\$1,075**. Mounting #85916, **\$159**.



68577 5-Station Diamond Necklace, 3/4 CTW, 14kt white, 545, 18", **\$2,715**



651933 Diamond Ring, 3/4 CTW, 11mm, 14kt white, 432, **\$3,425**



651691 Diamond Ring, 3/4 CTW, 13mm, 14kt white, 554, **\$2,879**

NEW

two-stone: the trend we love

These new styles communicate a romantic message, drawing the eye with their flow and light.



652226 Two-Stone Diamond Pendant, 5/8 CTW, 19.5x8mm, 14kt white, 545, **\$2,305**



652227 Two-Stone Diamond Pendant, 5/8 CTW, 22x7mm, 14kt white/14kt yellow, 545, **\$2,035**



652225 Two-Stone Diamond Pendant, 5/8 CTW, 22x8mm, 14kt white, 545, **\$2,359**



652224 Two-Stone Diamond Ring, 1/4 CTW, 14kt white, 545, **\$1,085**



652223 Two-Stone Diamond Ring, 1/4 CTW, 14kt white, 545, **\$1,085**



652222 Two-Stone Diamond Earrings, 3/8 CTW, 18x8mm, 14kt white, 545, **\$1,655 per pair**



652221 Two-Stone Diamond Earrings, 5/8 CTW, 20x7mm, 14kt white, 545, **\$2,255 per pair**



A. **122424** Round-Shape Solitaire Mounting, 1½ ct center (7.4mm), 14kt white, **\$625** | B. **122917** Round-Shape Semi-Mount Engagement, ½ ct center (5.2mm), ⅜ CTW, 14kt white/rose, 32, size 7, **\$1,875**. Mounting #122917
 C. **122664** Round-Shape Semi-Mount Engagement, 1 ct center (6.5mm), ⅓ CTW, 14kt yellow, 32, size 7, **\$1,109**. Mounting #122664.
 D. **122838** Round-Shape Semi-Mount Engagement, 1 ct center (6.5mm), ⅓ CTW, 14kt white, 32, size 7, **\$1,125**. Mounting #122838. | E. **67860** Round-Shape Semi-Mount Engagement, 1 ct center (6.5mm), ⅞ CTW, 14kt white, 32, size 7, **\$3,709**. Mounting #121860.
 F. **140309L** Round-Shape Six-Prong Solitaire Mounting, 1¼ ct center (7mm), 14kt rose, size 7, **\$309**

gift of a lifetime

Elegantly sculpted galleries, peek-a-boo diamonds, two-tone designs — help him make this Valentine's Day proposal as memorable as she is.

G. **122238** Cushion-Shape Semi-Mount Engagement, 2½ ct center (8x8mm), ½ CTW, 14kt white/yellow, 32, size 7, **\$2,585**. Mounting #122238. | H. **122045** Square-Shape Semi-Mount Engagement, ¾ ct center (5x5mm), ¼ CTW, 14kt yellow, 32, size 7, **\$1,319**. Mounting #122045. | J. **122118** Round-Shape Six-Prong Solitaire Mounting, 1 ct center (6.5mm), 14kt white, size 7, **\$469** | K. **122474** Oval-Shape Semi-Mount Engagement, ½ ct center (6x4mm), ⅓ CTW, 14kt rose, 32, size 7, **\$1,865**. Mounting #122474. | L. **122043** Round-Shape Semi-Mount Engagement, 1 ct center (6.5mm), ⅓ CTW, 14kt white, 32, size 7, **\$1,269**. Mounting #122043. | M. **122688** Round-Shape Semi-Mount Engagement, 1 ct center (6.5mm), ⅓ CTW, 14kt white, 32, size 7, **\$1,209**. Mounting #122688.



3C
122907 Cushion-Shape Semi-Mount Engagement, 1¼ ct center (6x6mm), ⅓ CTW, 14kt white/14kt yellow, 32, size 7, **\$1,125**. Mounting #122907.



51625 Matching Band (not shown), 14kt white, size 7, **\$425**



3C
122873 Cushion-Shape Semi-Mount Engagement, 1¼ ct center (6x6mm), ⅓ CTW, 14kt white, 32, size 7, **\$1,675**. Mounting #122873.



122874 Matching Diamond Band, ⅓ CTW, 14kt white, 32, size 7, **\$999**. Mounting #122874.



3C
122909 Cushion-Shape Semi-Mount Engagement, 1¼ ct center (6x6mm), ⅓ CTW, 14kt white/14kt yellow, 32, size 7, **\$2,005**. Mounting #122909.



122959 Matching Diamond Band (not shown), ⅓ CTW, 14kt white, 32, size 7, **\$955**



122912 Round-Shape Semi-Mount Engagement, 1 ct center (6.5mm), .02 CTW, 14kt white/14kt rose, 32, size 7, **\$615**. Mounting #122912.

122944 Matching Diamond Band (not shown), ¼ CTW, 14kt white, 32, size 7, **\$1,125**



3C
122903 Round-Shape Solitaire Mounting, 1 ct center (6.5mm), 14kt white/14kt yellow, size 7, **\$455**



51599 Matching Band (not shown), 14kt white, size 7, **\$605**



122911 Round-Shape Semi-Mount Engagement, 1 ct center (6.5mm), ⅜ CTW, 14kt white/14kt rose, 32, size 7, **\$1,365**. Mounting #122911.

122944 Matching Diamond Band (not shown), ¼ CTW, 14kt white, 32, size 7, **\$1,125**



122778 Round-Shape Semi-Mount Engagement, $\frac{3}{4}$ ct center (5.8mm), $\frac{1}{3}$ CTW, 14kt white, 32, size 7, **\$1,515**. Mounting #122778.



122850 Diamond Anniversary Band, $\frac{1}{5}$ CTW, 14kt white, 32, size 7, **\$1,309**. Mounting #122850.



122910 Round-Shape Semi-Mount Engagement, 1 ct center (6.5mm), $\frac{1}{3}$ CTW, 14kt white/14kt rose, 32, size 7, **\$2,199**. Mounting #122910.

122944 Matching Diamond Band (not shown), $\frac{1}{4}$ CTW, 14kt white, 32, size 7, **\$1,125**



3C

122864 Round-Shape Semi-Mount Engagement, 1 ct center (6.5mm), $\frac{1}{3}$ CTW, 14kt yellow/14kt white, 32, size 7, **\$1,729**. Mounting #122864.



122865 Diamond Anniversary Band, $\frac{1}{5}$ CTW, 14kt yellow, 32, size 7, **\$1,065**. Mounting #122865.



122781 Cushion-Shape Semi-Mount Engagement, $1\frac{1}{4}$ ct center (6x6mm), $\frac{1}{4}$ CTW, 14kt white, 32, size 7, **\$1,465**. Mounting #122781.



51593 Matching Band, 14kt white, size 7, **\$395**



3C

122875 Cushion-Shape Semi-Mount Engagement, $1\frac{1}{4}$ ct center (6x6mm), $\frac{1}{2}$ CTW, 14kt white, 32, size 7, **\$1,875**. Mounting #122875.



122876 Diamond Anniversary Band, $\frac{1}{5}$ CTW, 14kt white, 32, size 7, **\$1,059**. Mounting #122876.



3C

122854 Cushion-Shape Semi-Mount Engagement, $1\frac{1}{4}$ ct center (6x6mm), $\frac{1}{5}$ CTW, 14kt white, 32, size 7, **\$1,009**. Mounting #122854.



51594 Matching Band, 14kt white, size 7, **\$335**



652109 Round-Shape Semi-Mount Engagement, 1 ct center (6.5mm), $\frac{1}{2}$ CTW, 14kt white/14kt yellow, 109, size 7, **\$1,795**

652109 Matching Diamond Band, $\frac{1}{4}$ CTW, 14kt white, 109, size 7, **\$1,035**



652111 Round-Shape Semi-Mount Engagement, 1 ct center (5.2mm), $\frac{1}{3}$ CTW, 14kt white/14kt yellow, 109, size 7, **\$1,305**

652111 Diamond Anniversary Band, $\frac{1}{4}$ CTW, 14kt white, 109, size 7, **\$995**



652110 Round-Shape Semi-Mount Engagement, 1 ct center (6.5mm), $\frac{1}{2}$ CTW, 14kt white/14kt rose, 109, size 7, **\$2,039**

652110 Matching Diamond Band, $\frac{1}{6}$ CTW, 14kt white, 109, size 7, **\$749**



652113 Round-Shape Semi-Mount Engagement, 1 ct center (6.5mm), $\frac{5}{8}$ CTW, 14kt white/14kt rose, 109, size 7, **\$2,369**

652113 Diamond Anniversary Band, $\frac{1}{5}$ CTW, 14kt white, 109, size 7, **\$835**



652141 Round-Shape Semi-Mount Engagement, $\frac{3}{4}$ ct center, $\frac{1}{2}$ CTW, 14kt white/14kt rose, 109, size 7, **\$2,085**

652141 Matching Diamond Band, $\frac{1}{5}$ CTW, 14kt white, 109, size 7, **\$865**



652112 Round-Shape Semi-Mount Engagement, 1 ct center (6.5mm), $\frac{1}{2}$ CTW, 14kt white/14kt rose, 109, size 7, **\$1,889**

652112 Matching Diamond Band, $\frac{1}{4}$ CTW, 14kt white, 109, size 7, **\$1,015**

details that speak to her heart



3C

121992 Cushion-Shape Semi-Mount Engagement, 1¼ ct center (6x6mm), ⅜ CTW, 14kt white, 32, size 7, **\$2,025**. Mounting #121992.



122147 Diamond Anniversary Band, ¼ CTW, 14kt white, 32, size 7, **\$1,085**. Mounting #122147.



3C

122917 Cushion-Shape Semi-Mount Engagement, 6x6mm (5.2mm), ⅜ CTW, 14kt white, 32, size 7, **\$1,875**. Mounting #122917.



51619 Matching Band



Find the perfect diamond that's sure to please. Visit Stuller.com and search "Love Diamonds."



3C

122672 Round-Shape Semi-Mount Engagement, 1 ct center (6.5mm), ¼ CTW, 14kt white, 38, size 7, **\$1,499**. Mounting #122672.

51526 Matching Band, 14kt white, size 7, **\$435**



3C

69706 Round-Shape Semi-Mount Engagement, 1 ct center (6.5mm), ⅓ CTW, 14kt white, 22, size 7, **\$3,095**. Mounting #69706.



51230 Matching Band, 14kt white, size 7, **\$449**



3C

122923 Round-Shape Semi-Mount Engagement, 1 ct center (6.5mm), ¼ CTW, 14kt white, 32, size 7, **\$1,815**. Mounting #122923.



51597 Matching Band



3C

122705 Oval-Shape Four-Prong Solitaire Mounting, 1 ct center (7x5mm), 14kt yellow, size 7, **\$459**



51544 Matching Band, 14kt yellow, size 7, **\$325**



3C

122797 Oval-Shape Semi-Mount Engagement, 1 ct center (7x5mm), .04 CTW, 14kt white, 32, size 7, **\$759**. Mounting #122797.



51561 Matching Band, 14kt white, size 7, **\$475**



3C

122004 Oval-Shape 6-Prong Solitaire Mounting, 1 ct center (7x5mm), 14kt white, size 7, **\$395**



51236 Matching Band, 14kt white, size 7, **\$415**

two stones. two hearts.

Two stones enveloped by flowing lines, like two hearts surrounded by love, drawing the eye with beauty and balance.



A. **122927** Round-Shape Two-Stone Semi-Mount Ring, 2-4.4mm, ⅓ CTW, 14kt white, 32, size 7, **\$1,369**. Mounting #122927.

B. **652208** Round-Shape Two-Stone Semi-Mount Ring, 2-5.2mm, ⅓ CTW, 14kt white, 109, size 7, **\$1,415**

C. **122929** Round-Shape Two-Stone Ring Mounting, 2-4.4mm, 14kt white, 32, size 7, **\$525**

3C D. **122934** Round-Shape Two Stone Semi-Mount, 2-5.2mm, ⅓ CTW, 14kt white, 32, size 7, **\$5,475**. Mounting #122934.





3C **122892** Emerald-Shape Semi-Mount Engagement, 1 ct center (7x5mm), $\frac{3}{8}$ CTW, 14kt white, 32, size 7, **\$2,265**. Mounting #122892.



122893 Matching Diamond Band, $\frac{1}{6}$ CTW, 14kt white, 32, size 7, **\$955**. Mounting #122893.



3C **122840** Emerald-Shape Semi-Mount Engagement, 1 ct center (7x5mm), $\frac{1}{4}$ CTW, 14kt white, 32, size 7, **\$1,595**. Mounting #122840.



122841 Diamond Anniversary Band, $\frac{1}{4}$ CTW, 14kt white, 32, size 7, **\$1,409**. Mounting #122841.



3C **122665** Emerald-Shape Semi-Mount Engagement, 1 ct center (7x5), .08 CTW, 14kt white, 32, size 7, **\$999**. Mounting #122665.



122717 Matching Diamond Band, .08 CTW, 14kt white, 32, size 7, **\$749**. Mounting #122717.



3C **122870** Cushion-Shape Semi-Mount Engagement, $1\frac{1}{4}$ ct center (6x6mm), $\frac{3}{8}$ CTW, 14kt white, 32, size 7, **\$1,725**. Mounting #122870.



122871 Diamond Anniversary Band, $\frac{1}{4}$ CTW, 14kt white, 32, size 7, **\$1,095**. Mounting #122871.



3C **122804** Cushion-Shape Semi-Mount Engagement, $1\frac{1}{4}$ ct center (6x6mm), $\frac{3}{4}$ CTW, 14kt rose, 32, size 7, **\$2,595**. Mounting #122804.



122805 Diamond Anniversary Band, $\frac{1}{2}$ CTW, 14kt rose, 32, size 7, **\$1,605**. Mounting #122805.



3C **122793** Cushion-Shape Semi-Mount Engagement, $1\frac{1}{4}$ ct center (6x6mm), $\frac{1}{3}$ CTW, 14kt white, 32, size 7, **\$1,839**. Mounting #122793.



122794 Diamond Anniversary Band, $\frac{1}{8}$ CTW, 14kt white, 32, size 7, **\$875**. Mounting #122794.



3C **122868** Square-Shape Semi-Mount Engagement, 1 ct center (5.5x5.5mm), $\frac{1}{6}$ CTW, 14kt white, 32, size 7, **\$1,085**. Mounting #122868.



122869 Matching Diamond Band, $\frac{1}{4}$ CTW, 14kt white, 32, size 7, **\$1,155**. Mounting #122869.



3C **122913** Square-Shape Semi-Mount Engagement, 1 ct center (5.5x5.5mm), $\frac{1}{3}$ CTW, 14kt white, 32, size 7, **\$1,499**. Mounting #122913.



122914 Diamond Anniversary Band, $\frac{1}{4}$ CTW, 14kt white, 32, size 7, **\$1,205**. Mounting #122914.



122768 Square-Shape Semi-Mount Engagement, 1 ct center (5.5x5.5mm), $\frac{1}{3}$ CTW, 14kt white, 32, size 7, **\$1,299**. Mounting #122768.

122768 Matching Diamond Band, $\frac{1}{3}$ CTW, 14kt white, 32, size 7, **\$1,295**. Mounting #122768.

E. 122928 Round-Shape Two-Stone Ring Mounting, 2-4.4mm, 14kt white, 32, size 7, **\$505**

F. 652211 Round-Shape Two-Stone Semi-Mount Ring, 2-5.2mm, $\frac{1}{3}$ CTW, 14kt white, 109, size 7, **\$1,495**

3C G. 122933 Round-Shape Two-Stone Semi-Mount Ring, 2-5.2mm, $\frac{1}{6}$ CTW, 14kt white, 32, size 7, **\$1,079**. Mounting #122933.



3C H. 122935 Round-Shape Two-Stone Solitaire Ring, 2-5.2mm, 14kt white, size 7, **\$545**



J. 122931 Round-Shape Two-Stone Semi-Mount Ring, 2-4.4mm, .07 CTW, 14kt white, 32, size 7, **\$1,145**. Mounting #122931.

celebrate love

For all the times she's been there,
all the times she's cared.



- A. **122737** Diamond Contour Band, $\frac{1}{8}$ CTW, 14kt white, 32, size 7, **\$619**. Mounting #122737.
- B. **122765** Diamond Ring Guard, $\frac{3}{8}$ CTW, 14kt white, 32, size 7, **\$2,049**. Mounting #122765.
- C. **140309L** Round-Shape Six-Prong Solitaire Mounting, $1\frac{1}{4}$ ct center (7mm), 14kt rose, size 7, **\$309**
- D. **651990** Diamond Ring Guard, $\frac{3}{4}$ CTW, 14kt white, 109, size 7, **\$2,559**
- E. **122783** Diamond Contour Band with Milgrain, $\frac{1}{8}$ CTW, 14kt white, 32, size 7, **\$959**. Mounting #122783.



A



B



C



D



E



F



G



H



J

- A. **60182** Diamond Ring Guard, $\frac{1}{4}$ CTW, 14kt white, 32, size 7, **\$1,325**. Mounting #11502.
- B. **651360** Diamond Ring Guard, $\frac{1}{2}$ CTW, 14kt yellow, 109, size 7, **\$1,725**
- C. **122764** Diamond Ring Guard, $\frac{1}{4}$ CTW, 14kt white, 32, size 7, **\$1,379**. Mounting #122764.
- D. **122762** Diamond Ring Guard, $\frac{1}{8}$ CTW, 14kt rose, 32, size 7, **\$1,205**. Mounting #122762.
- E. **122763** Diamond Ring Guard, $\frac{1}{4}$ CTW, 14kt white, 32, size 7, **\$1,855**. Mounting #122763.
- F. **122761** Metal Ring Guard, 14kt yellow, size 7, **\$649**
- G. **122760** Diamond Contour Band, $\frac{1}{8}$ CTW, 14kt white, 32, size 7, **\$909**. Mounting #122760.
- H. **122758** Channel-Set Diamond Contour Band, $\frac{1}{3}$ CTW, 14kt white, 32, size 7, **\$1,355**. Mounting #122758.
- J. **122759** Diamond Contour Band, $\frac{1}{4}$ CTW, 14kt white, 32, size 7, **\$1,125**. Mounting #122759.

3C

122878 Diamond Anniversary Band, 14kt white, 32, size 7.
Mounting #122878.



stone mm	1.5	1.7	2.0	2.5
CTW	1/8	3/8	1/2	3/4
Complete	\$1,395	\$1,449	\$1,619	\$2,265
Mounting	\$509	\$535	\$565	\$625



3C

122108 Diamond Eternity Band, 14kt yellow, 32, size 7.
Mounting #122108.



stone mm	1.5	1.7	2.0	2.5
CTW	5/8	3/4	9/10	1 1/2
Complete	\$1,925	\$2,165	\$2,539	\$4,039
Mounting	\$409	\$445	\$559	\$705



3C

122107 Diamond Eternity Band, 14kt white, 32, size 7,
Mounting #122107.



stone mm	1.5	1.7	2.0	2.5
CTW	1/2	5/8	7/8	1 3/8
Complete	\$1,645	\$1,855	\$2,195	\$3,495
Mounting	\$299	\$315	\$325	\$365



51582 Wheat Patterned Fancy Band, 3mm, 14kt white, size 7, **\$555**



51580 Crescent Band with Faux Milgrain Design, 3mm, 14kt yellow, size 7, **\$409**



51581 Sculptural Relief Patterned Fancy Band, 2.5mm, 14kt white, size 7, **\$665**



51577 Low Dome Sculptural Relief Patterned Band, 4mm, 14kt white, size 7, **\$729**

personalization

Personal gifts have come a long way. Your many options stretch from newer trending styles to classic bestsellers. What's your choice?



A. **67399** Diamond Script L Initial Necklace, $\frac{1}{8}$ CTW, 14kt white, 33, 17", **\$739** | B. **67311** Diamond Block G Initial Necklace, $\frac{1}{6}$ CTW, 14kt yellow, 33, 16", **\$709** | C. **51552** Oval Signet Ring, 11x9mm, 14kt white, **\$685** | D. **84691** Posh Mommy® Engravable Disc Pendant, 16mm, 1-2mm, 14kt rose, **\$545*** | E. **5545** Oval Signet Ring, 9x11mm, 14kt rose, **\$529** | F. **85775** Be Posh® Engravable Bar Pendant, 19x10mm, 14kt rose, **\$545†** | G. **86179** Posh Mommy® Imitation Pink Tourmaline Charm, 4mm, 14kt rose, 405, **\$95** | H. **51317** Three-Letter Vine Monogram Ring, 18mm, sterling silver, **\$225**

POSH MOMMY®

Available fonts for Posh Mommy

Lowercase Hand • Courier • Jasmine



84967 Posh Mommy® Engravable Heart Pendant, 16x15mm, 1-2mm, 14kt yellow, **\$435***

86093 Posh Mommy® Engravable Small Heart Pendant, 20mm, 2-2mm, 14kt white, **\$525***

84681 Posh Mommy® Engravable Mini Disc Pendant, 13mm, 14kt yellow, **\$325†**

CH123 Diamond Cut Cable Chain, 1mm, 14kt yellow, 18", **\$195**

CH123 Diamond Cut Cable Chain, 1mm, 14kt white, 18", **\$189**

CH132 Cable Chain, 1mm, 14kt yellow, 18", **\$209**

86179 Posh Mommy® Charm, 4mm, 14kt white



January, Imitation Garnet, 122, **\$85**



February, Imitation Amethyst, 446, **\$85**



March, Imitation Aquamarine, 86, **\$85**



April, Imitation Diamond, 448, **\$79**



May, Imitation Emerald, 123, **\$85**



June, Imitation Alexandrite, 85, **\$89**



July, Imitation Ruby, 361, **\$89**



August, Imitation Peridot, 449, **\$95**



September, Imitation Blue Sapphire, 406, **\$89**



October, Imitation Pink Tourmaline, 405, **\$89**



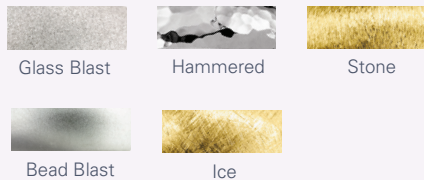
November, Imitation Citrine, 450, **\$95**



December, Imitation Blue Zircon, 451, **\$89**

BE POSH®

Available finishes for Be Posh



Available fonts for Be Posh

Typewriter • *Corinthia* • Bookman Old Style
Lucida Handwriting • Old English

Script MT Bold • Circle Monogram

ROMAN MONOGRAM • Vine Monogram

Your own handwritten message



85773 Be Posh® Engravable Heart Pendant, 11x9mm, 14kt rose, **\$209†**



85778 Be Posh® Engravable Bar Necklace, 6.5x33.5mm, 14kt rose, **\$695**



85776 Be Posh® Engravable Oval Pendant, 13x9.5mm, 14kt yellow, **\$245†**



51406 Be Posh® Engravable Antique Beaded Ring, 14kt white, **\$349†**



51408 Be Posh® Engravable Heart Ring, 14kt yellow, **\$385†**



51400 Be Posh® Engravable Round Beaded Ring, 14kt rose, **\$345†**

*Priced with engraving, enamel, and imitation stone. No chain.
†Priced with engraving, enamel, and finish. No chain.



86386 Double Heart Engravable Necklace, 10x22mm, 14kt yellow, 17", **\$535**



85894 Diamond Heart Pendant, .03 CTW, 13.5x8mm, 14kt rose, 33, **\$209**. Mounting #85894, **\$135**.
CH132 Cable Chain, 1mm, 14kt rose, 18", **\$215**



86326 Double Heart Engravable Necklace Mounting, 2-1.7mm, 20x33mm, 14kt white, 17.5", **\$725**

engravable



51563 Rectangle Signet Ring, 7x5mm, 14kt rose, **\$369**

engravable



51554 Geometric Signet Ring, 10mm, 14kt yellow, **\$565**

engravable



5623 Heart Signet Ring, 9mm, 14kt white, **\$699**

engravable



51551 Oval Signet Ring, 9x11mm, 14kt rose, **\$585**

engravable



51553 Shield Signet Ring, 11mm, 14kt white, **\$679**

engravable



51550 Rectangle Signet Ring, 4x16mm, 14kt rose, **\$459**

engravable



86357 Shield Pendant, 22.5x14mm, 14kt yellow, **\$285**

engravable



86358 Shield Pendant, 23.5x14mm, 14kt white, **\$325**

engravable



86359 Shield Pendant, 22.5x14mm, 14kt yellow, **\$319**



A. **85557** Diamond Script T Initial Necklace, .03 CTW, sterling silver, 239, 18", **\$195**

B. **84635** Script L Initial Necklace, 14kt white, 16", **\$385**

C. **85803** Diamond Lowercase R Initial Necklace, .025 CTW, 14kt rose, 33, 16", **\$345**

D. **85088** Posh Mommy® Diamond O Initial Pendant, 1/10 CTW, 14kt yellow, 33, **\$829**

E. **85899** Lowercase Script U Initial Necklace, 14kt yellow, 18", **\$305**

F. **67399** Diamond Script V Initial Necklace, 1/8 CTW, 14kt rose, 33, 17", **\$705**

F. **67311** Diamond Block E Initial Necklace, 1/6 CTW, 14kt white, 33, 16", **\$649**

G. **84635** Script E Initial Necklace, 14kt rose, 16", **\$405**



86021 Three-Letter Block Monogram Necklace, 15mm, 14kt white, 18", **\$425**



86013 Three-Letter Vine Monogram Necklace, 25mm, 14kt yellow, 18", **\$855**



86026 Two-Letter Vine Monogram Necklace, 15mm, 14kt rose, 18", **\$435**



86010 Three-Letter Vine Monogram Earrings, 13mm, 14kt yellow, **\$435 per pair**



86004 Three-Letter Vine Monogram Bangle Bracelet, 30mm, sterling silver with 14kt rose gold plate, 6.5", **\$355**



51317 Three-Letter Vine Monogram Ring, 18mm, sterling silver, **\$225**



roses for her

Real semi-opened rose petals dipped in lacquer and trimmed in 24kt gold. The stems are approximately 12" long and gold plated to create a fine gift of nature preserved in 24kt gold. Each rose is elegantly wrapped in gold tissue and packaged in a golden box.



- A. **61-9060** Pink Pearl Colored Rose with Gold Trim, 12", **\$99**
- B. **61-9140** 24kt Gold Rose Bud, 12", **\$119**
- C. **61-9141** Lacquered Red Rose with Gold Trim, 12", **\$99**
- D. **61-9061** Lacquered Cream Picasso Rose with Gold Trim, 12", **\$99**
- E. **61-9148** Lacquered Yellow Rose With Gold Trim, 12", **\$99**
- F. **61-9166** Lacquered Red Rose With Platinum Trim, 12", **\$99**
- G. **61-9062** Lacquered April Diamond Colored Rose With Gold Trim, 12", **\$99**
- H. **61-9142** Lacquered Orange Rose with Gold Trim, 12", **\$99**
- J. **61-9063** Lacquered October Opal Rose With Gold Trim, 12", **\$99**
- K. **61-9146** Lacquered Cream Rose With Gold Trim, 12", **\$99**
- L. **61-9064** Lacquered Cream Yellow Rose With Gold Trim, 12", **\$99**
- M. **61-9147** Lacquered Pink Rose With Gold Trim, 12", **\$99**
- N. **61-9170** 24kt Rose Gold Rose, 12", **\$119**

heirloom quality jewelry chests

Expert American craftsmen make these jewelry chests in the U.S.A. They hand sand the finest North American hardwood, apply rich, hand-rubbed finishes, detail them with plush suede lining, and inspect for the most exacting standards.

These heirloom quality chests will last for years to come.



65-1704 Mahogany Finish Jewelry Chest 15½" x 9¾" x 6¾", \$249

65-1703 Cherry Finish Jewelry Chest, 9" x 13" x 5", \$165



65-1702 Cherry Finish Jewelry Chest, 13½" x 15½" x 8", \$266

65-1701 Cherry Finish Jewelry Chest, 9¾" x 15½" x 6¾", \$249



65-1700 Cherry Finish Jewelry Chest, 9½" x 13" x 7", \$249

65-1705 Mahogany Finish Jewelry Chest, 12½" x 17" x 10¾", \$465



distinctive bands

Textured details — inside, outside, even on the side — make these wedding bands stand out from the crowd.

- A. **122719** Half-Round Comfort Fit Double Milgrain Diamond Band, ¼ CTW, 6mm, 14kt white, 32, size 11, **\$1,799**. Mounting #122719.
 B. **51577** Low Dome Sculptural Relief Patterned Band, 4mm, 14kt yellow, size 7, **\$729**
 C. **HRL** Half-Round Light Band, 5mm, 14kt white, size 11, **\$475**

- 3C** **122788** Channel-Set Diamond Band.
 Mounting#122788.



Round-Shape, 2mm, ⅙ CTW, 14kt white, 32, size 11, **\$1,335**



Square-Shape, 2mm, ⅙ CTW, 14kt white, 35, size 11, **\$1,699**

- 3C** **122789** Channel-Set Diamond Band.
 Mounting#122789.



Round-Shape, 2mm, ⅙ CTW, 14kt white, 32, size 11, **\$1,335**



Square-Shape, 2mm, ⅙ CTW, 14kt white, 35, size 11, **\$1,689**

- 3C** **122785** Channel-Set Diamond Band.
 Mounting #122785.



Round-Shape, 2.5mm, ⅓ CTW, 14kt white, 32, size 11, **\$1,825**



Square-Shape, 2.5mm, ½ CTW, 14kt white, 35, size 11, **\$2,39**

- 122720** Knife-Edge Comfort-Fit Diamond Band.
 Mounting #122720.



Round-Shape, ⅒ CTW, 4mm, 14kt white, 32, size 11, **\$1,109**



Round-Shape, ¼ CTW, 6mm, 14kt yellow, 32, size 11, **\$1,885**

Engraving and Special Finishes

Personalize your classic band by choosing from seven special finishes and eight engraving fonts or your own handwriting. Voila! You have a custom band.

Learn more at Stuller.com/Engraving.



A



E



J



B



F



K



C



G



L



D



H



M

A. **MG** Milgrain Band, 3mm, 14kt white, size 11, **\$639**

E. **IRL** Comfort-Fit Light Band, 4mm, 14kt yellow, size 11, **\$519**

J. **FE** Flat-Edge Band, 5mm, 14kt white, size 11, **\$559**

B. **51565** Low Dome Band with Inside Paisley Design, 4mm, 14kt white, size 11, **\$639**

F. **51564** Low Dome Band with Inside Lattice Design, 6mm, 14kt white, size 11, **\$985**

K. **51578** Wheat Patterned Fancy Band, 5mm, 14kt yellow, size 11, **\$1,399**

C. **51538** Flat-Edge Comfort-Fit Milgrain Band with Satin Finish, 6mm, 14kt white, size 11, **\$969**

G. **51533** Flat Comfort-Fit Milgrain Band with Satin and Hammer Finish, 5mm, 14kt yellow, size 11, **\$875**

L. **51542** Half-Round Comfort-Fit Milgrain Band and Hammer Finish, 6mm, 14kt yellow, size 11, **\$1,375**

D. **51540** Knife-Edge Comfort-Fit Band with Milgrain, 4mm, 14kt white, size 11, **\$839**

H. **51534** Half-Round Comfort-Fit Band with Hammer Finish, 5mm, 14kt white, size 11, **\$1,105**

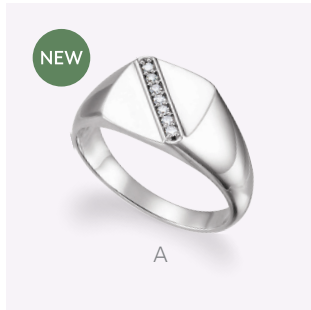
M. **51541** Flat-Edge Comfort-Fit Milgrain Band with Hammer Finish, 5mm, 14kt white, size 11, **\$809**



A. **TAR008B** Satin Finish Band with Black Immerse Plating, 8.3mm, tungsten, size 11, **\$329**
 B. **COR203** Grooved Band with Hammered Center, cobalt, size 11, **\$195**
 C. **COR251** Cast Band with Rosewood Inlay, 8mm, cobalt, size 11, **\$435**
 D. **T805** Domed Band, 3mm, titanium, size 11, **\$75**
 E. **T942** Ridged Band, 7mm, titanium/14kt yellow, size 11, **\$329**
 F. **TAR276** Beveled Band, 8.3mm, tungsten, size 11, **\$339**

surprise him

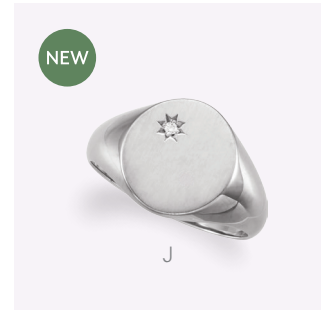
with a gift he'll wear every day



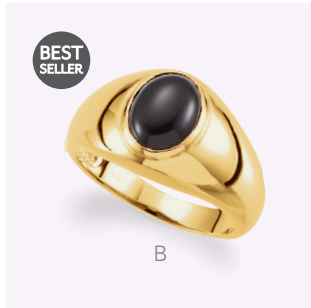
A



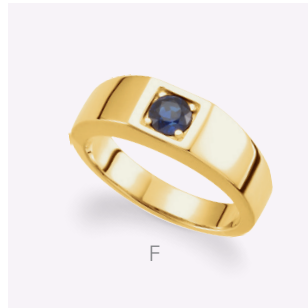
E



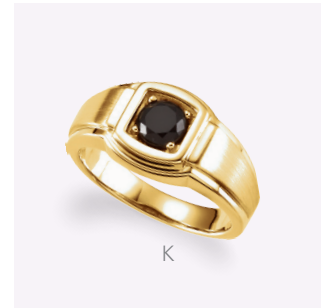
J



B



F



K



C



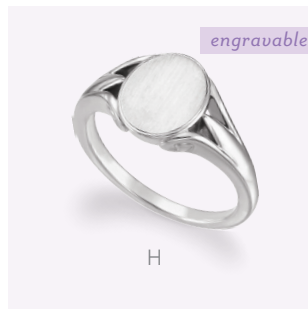
G



L



D



H



M

A. **9831** Men's Diamond Ring, 1/6 CTW, 12mm, 14kt white, 33, **\$1,169**. Mounting #9831, **\$1,055**.

B. **9222** Men's Genuine Onyx Ring, 10x8mm, 14kt yellow, 59, **\$1,525**. Mounting #9222, **\$1,399**.

C. **9825** Men's Shield Signet Ring, 14mm, 14kt yellow, **\$1,005**

D. **9828** Men's Rectangle Signet Ring, 12x10mm, 14kt white, **\$1,075**

E. **9832** Men's Diamond Signet Ring, .006 CTW, 12x12mm, 14kt yellow, 33, **\$1,045**. Mounting #9832, **\$1,009**.

F. **9739** Men's Genuine Blue Sapphire Ring, 5mm, 14kt yellow, 68, **\$2,305**. Mounting #9739, **\$1,365**.

G. **9823** Men's Oval Signet Ring, 14x12mm, 14kt white, **\$1,125**

H. **9829** Men's Oval Signet Ring, 12x10mm, 14kt white, **\$1,265**

J. **9833** Men's Diamond Signet Ring, .02 CTW, 14x12mm, 14kt white, 33, **\$1,345**. Mounting #9833, **\$1,279**.

K. **9728** Men's Genuine Onyx Ring, 6.5mm, 14kt yellow, 59, **\$1,579**. Mounting #9728, **\$1,459**.

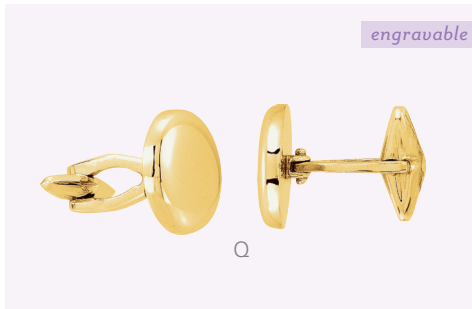
L. **9826** Men's Geometric Signet Ring, 14mm, 14kt white, **\$869**

M. **9822** Men's Rectangle Signet Ring, 13x12mm, 14kt yellow, **\$1,075**

accessories with a personal touch



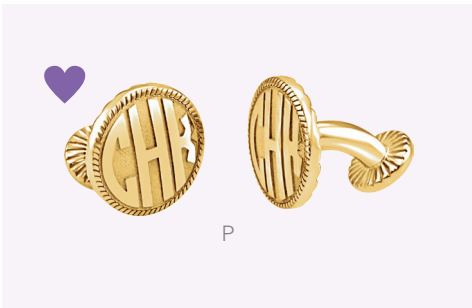
N



Q



S



P



R



T

N. **86112** Posh Mommy® Antique Square Cuff Links, 16x16mm, sterling silver, **\$139 per pair**

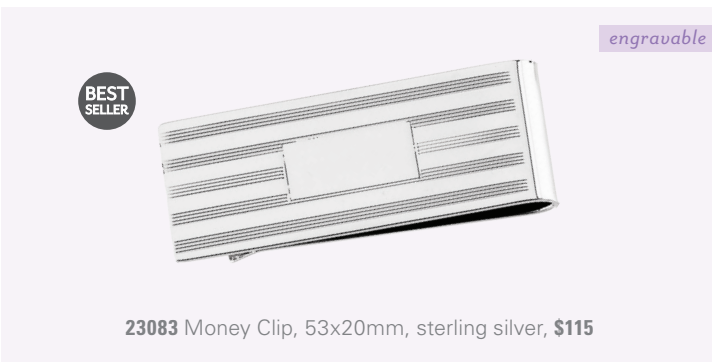
P. **651572** Three-Letter Round Block Monogram Cuff Links, 16.5mm, sterling silver with 14kt yellow gold plating, **\$469 per pair**

Q. **84975** Round Cuff Links, 16mm, 14kt yellow, **\$1,125 per pair**

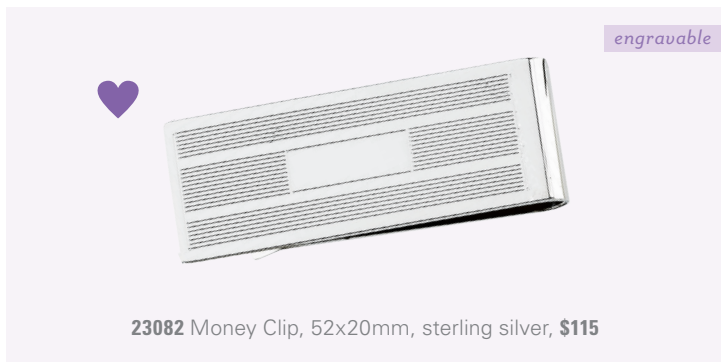
R. **651573** Three-Letter Rectangle Block Monogram Cuff Links, 13x18mm, sterling silver, **\$515 per pair**

S. **86113** Posh Mommy® Round Cuff Links, 16mm, sterling silver, **\$139 per pair**

T. **651571** Three-Letter Round Block Monogram Cuff Links, 16.5mm, sterling silver, **\$469 per pair**



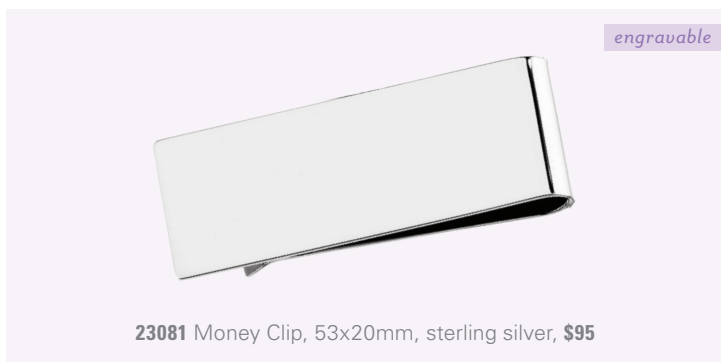
23083 Money Clip, 53x20mm, sterling silver, **\$115**



23082 Money Clip, 52x20mm, sterling silver, **\$115**



23078 Money Clip, 52x26mm, sterling silver, **\$125**



23081 Money Clip, 53x20mm, sterling silver, **\$95**

go-to
favorites



- A. **17515221** Men's Vintage Leather Watch Strap, gray, 18mm, **\$99.95**
- B. **17501181** Men's Vintage Leather Watch Strap, black, **\$99.95**
- C. **59-7011** Nylon NATO® Strap, blue and maroon, 18mm, **\$16.95**
- D. **59-7024** Leather NATO® Watch Strap, tan, 18mm, **\$41.95**



17503221 Men's Vintage Leather Watch Strap, tan, 22mm, **\$99.95**.
Handmade in Italy.



17503221 Men's Vintage Leather Watch Strap, black, 22mm, **\$99.95**.
Handmade in Italy.



17503221 Men's Vintage Leather Watch Strap, brown, 22mm, **\$99.95**.
Handmade in Italy.

*Straps come packaged with yellow and white buckles and pre-inserted spring bars.

NATO® watchbands

Choose this sought-after style, available in best-selling leather and nylon colors.

NATO® Watch Straps, sizes 18mm, 20mm, 22mm

Item Number	Color	Price
59-7022	Black	\$41.95
59-7024	Tan	\$41.95
59-7023	Brown	\$41.95



Black



Tan



Brown

NATO® Straps, sizes 18mm, 20mm, 22mm

Item Number	Color	Price
59-7010	Black/Beige/Black	\$16.95
59-7012	Blue/White/Red	\$16.95
59-7011	Blue/Maroon/Blue	\$16.95
59-7013	Blue/Green/Blue	\$16.95
59-7014	Black/White/Black	\$16.95



Black/Beige/Black



Blue/White/Red



Blue/Maroon/Blue



Blue/Green/Blue



Black/White/Black

intelligent watch winders

These sophisticated electronic instruments feature advanced solid-state microprocessors for unparalleled accuracy and service life.



65-1104 Tritan Single Watch Winder, black leather, 5" x 7½" x 6⅝", **\$350**



65-1100 Venus Single Watch Winder, stainless steel, 4" x 8¼" x 6¾", **\$225**



65-1107 Cosmos Single Watch Winder, black leather, 4⅝" x 4⅝" x 6⅛", **\$375**

STONE CODES

CODE	STONE CODE DESCRIPTION	ENHANCEMENT	CODE	STONE CODE DESCRIPTION	ENHANCEMENT
6	Chatham® Lab Created Ruby	Fine, SYN	158	Genuine Opal - Cab	AAA, Natural
7	Chatham Lab® Created Blue Sapphire	Fine, SYN	209	Genuine Diamond	I2, I-J, Natural
16	Freshwater Cultured Pearl - White	AA, Enhanced	239	Genuine Diamond	I2, G-H, Natural
21	Genuine Baguette Diamond	SI2-SI3, G-I, Natural	253	Genuine Morganite	A, Irradiation
32	Genuine Diamond	SI2-SI3, G-I, Natural	347	Genuine Sky Blue Topaz	AA, Irradiation
33	Genuine Diamond	I1, G-H, Natural	361	Imitation Ruby	IMIT
34	Square Diamond (Princess)	SI1, G-H, Natural	405	Imitation Pink Tourmaline	IMIT
35	Square Diamond (Princess)	SI2-SI3, G-H, Natural	406	Imitation Blue Sapphire	IMIT
43	Genuine Amethyst	AA, Heat Treated	430	Genuine Passion Topaz - Pink	Coating
45	Genuine Aquamarine	AA, Heat Treated	432	Genuine Diamond	I1, H-I, Natural
55	Genuine London Blue Topaz	AA, Irradiation	446	Imitation Amethyst	IMIT
59	Genuine Onyx	Dyed	448	Imitation Diamond	IMIT
60	Genuine Opal - Cab	A, Natural	449	Imitation Peridot	IMIT
63	Genuine Rhodolite Garnet	AA, Natural	450	Imitation Citrine	IMIT
66	Genuine Ruby	AA, Heat Treated	451	Imitation Blue Zircon	IMIT
67	Genuine Blue Sapphire	AA, Heat Treated	483	Charles and Colvard Forever Brilliant® Moissanite	SYN
68	Genuine Blue Sapphire	A, Heat Treated	498	Genuine Diamond	I2, H+, Natural
69	Genuine Blue Sapphire - Cab	A, Heat Treated	499	Genuine Diamond	I3, H-J, Natural
77	Genuine Swiss Blue Topaz	AA, Irradiation	518	Genuine Morganite	AA, Heat Treated
83	Genuine Pink Tourmaline	AA, Heat Treated	537	Genuine Diamond	I1, H-J, Natural
85	Imitation Alexandrite	SYN	545	Genuine Diamond	I1, H+, Natural
86	Imitation Aquamarine	SYN	548	Genuine Diamond	I2, H+, Natural
110	Genuine Diamond	I1, G-I, Natural	562	Genuine Diamond	I1-I2, H-J, Natural
109	Genuine Diamond	SI, G-H, Natural	612	Genuine Diamond	I3, H-I, Natural
122	Imitation Garnet	IMIT			
123	Imitation Emerald	IMIT			



Above, clockwise from top left: A. **651986** Shown on page 8, **\$1,295** | B. **122924** Oval-Shape Semi-Mount Engagement, 1 ct center (7x5mm), 1¼ CTW, 14kt white, 117, size 7, **\$1,575**. Mounting #122924. | C. **122744** Shown on page 14, **\$579** | D. **68970** Shown on page 15, **\$845** | E. **86383** Shown on page 6, **\$525** | F. **51577** Shown on page 27, **\$729**

Front cover, clockwise from top left: **86253** Shown on page 18, **\$649** | **652146** Shown on page 16, **\$805** | **71821** Shown on page 14, **\$835** | **651829** Shown on page 16, **\$505** | **122755** Diamond Eternity Band, ⅛ CTW, 14kt white, 32, size 7, **\$1,215**. Mounting #122755. | **86335** Shown on page 6, **\$435** | **122927** Shown on page 24, **\$1,369** | **51574** Shown on page 7, **\$325** | **122910** Shown on page 23, **\$2,199**

Product shown larger than actual size.

Suggested retail prices based on \$1,200 platinum, \$1,200 gold, and \$17 silver metal markets. | Items shown larger than actual size. | For current pricing and availability and to see the entire collections, visit stuller.com.

01/2016 MKTGMEDIA: 9281

S STULLER

stuller.com | 800 877 7777